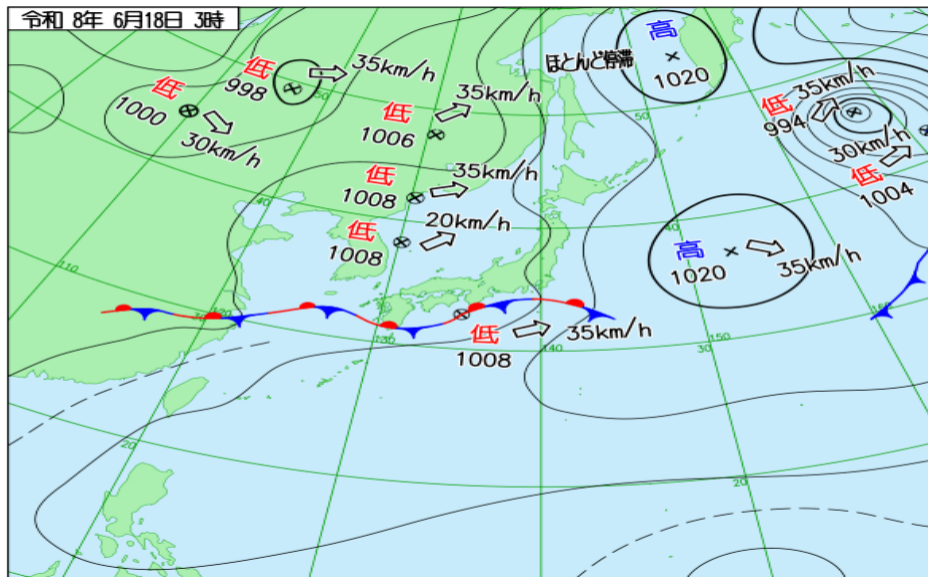
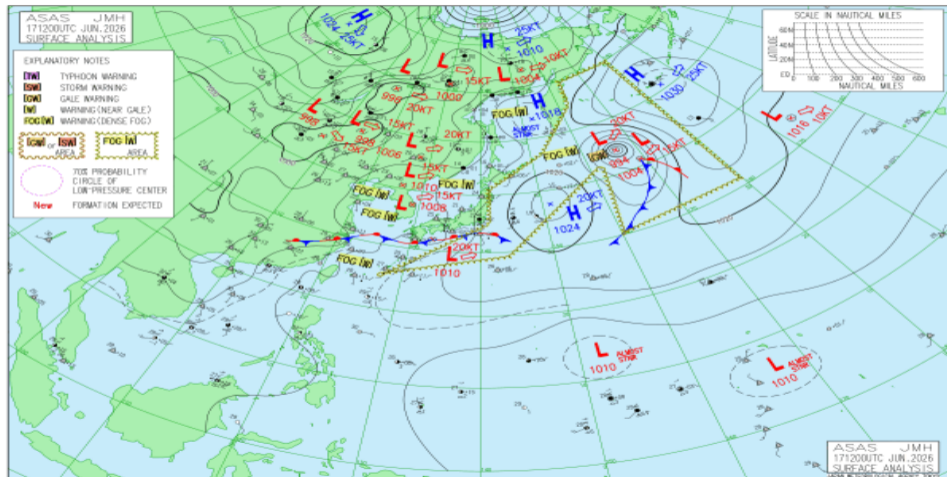


JMA 日本域実況天気図 06/17 18Z

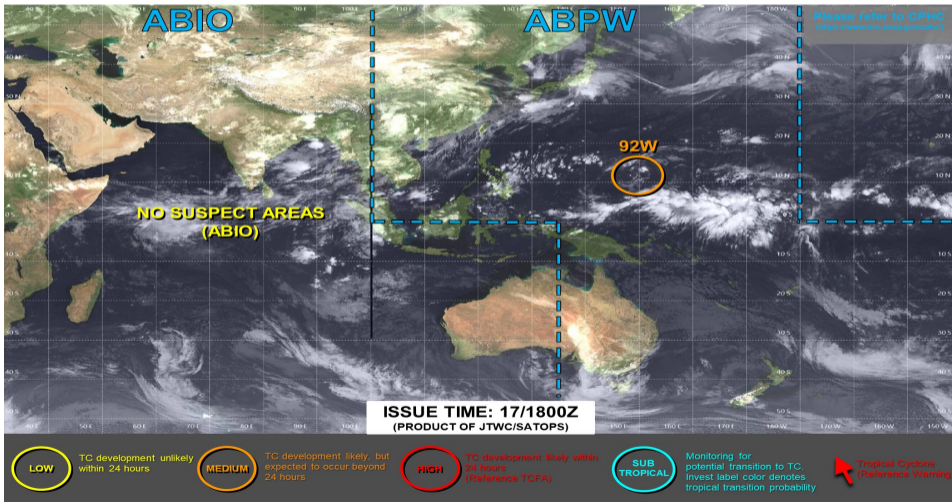


JMA アジア太平洋域実況天気図 06/17 12Z

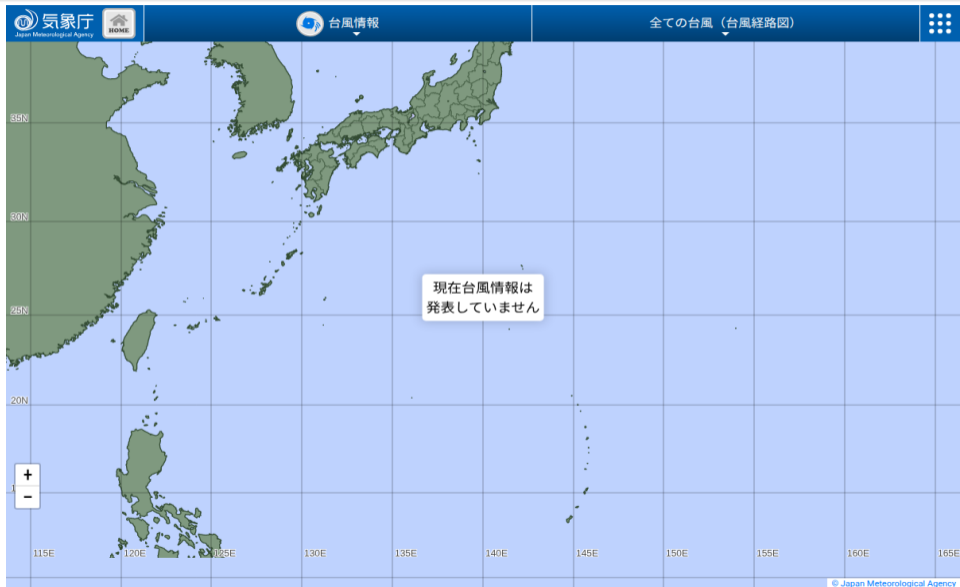




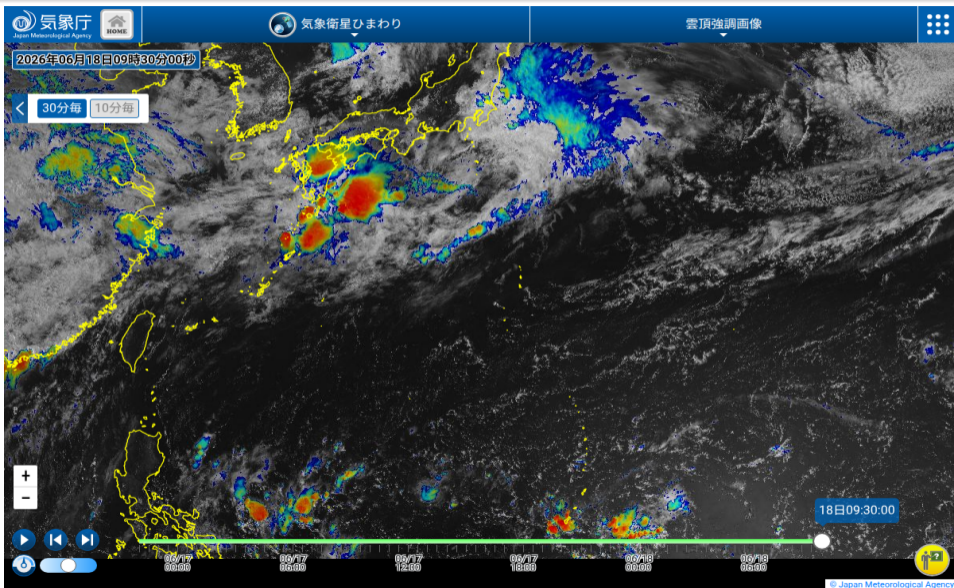
JOINT TYPHOON WARNING CENTER



JMA 台風実況

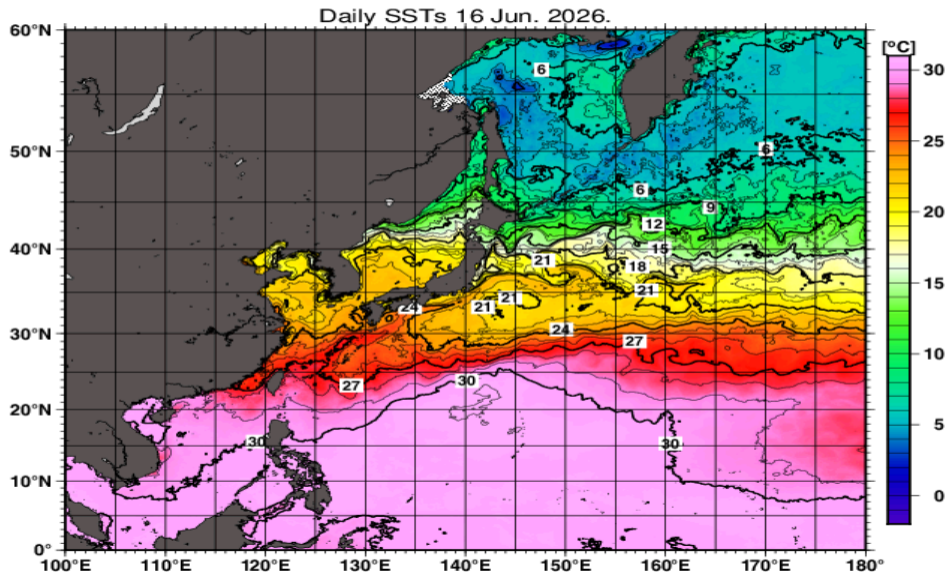


ひまわり雲頂強調

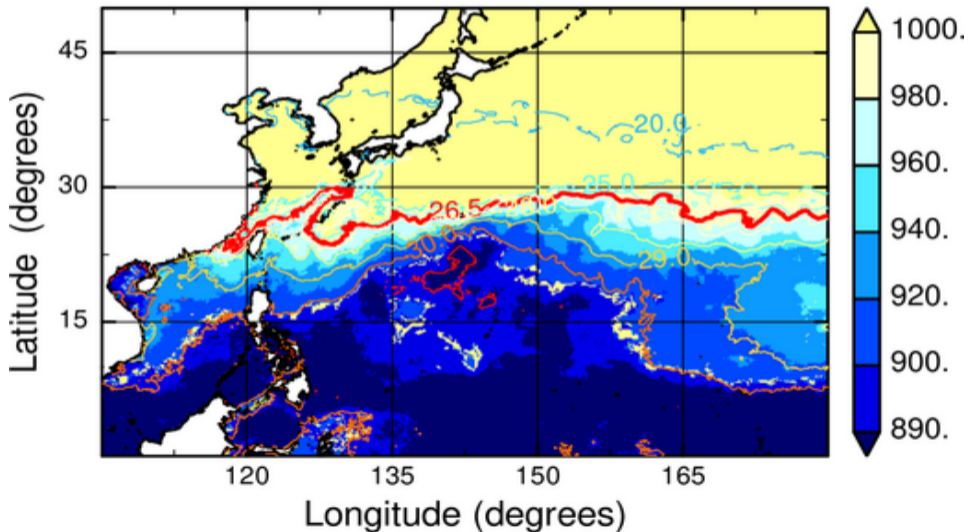


No Figure

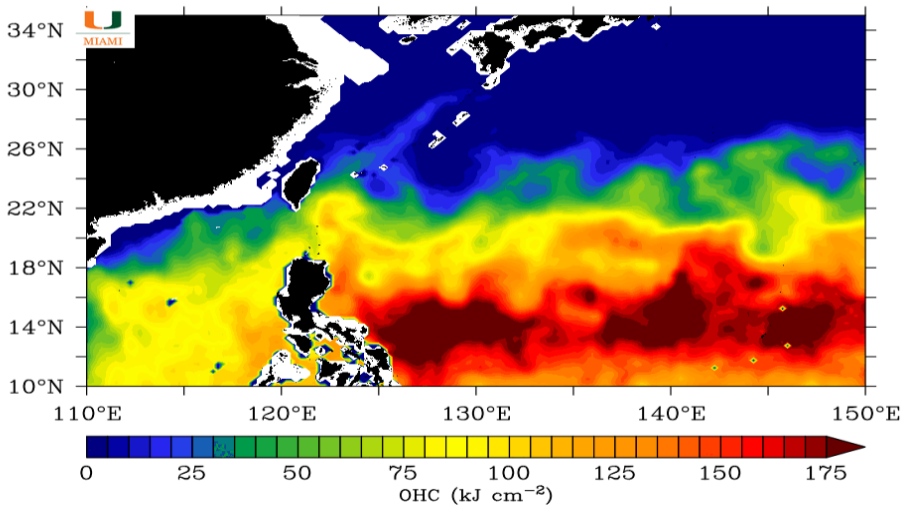
JMA 海面水温解析



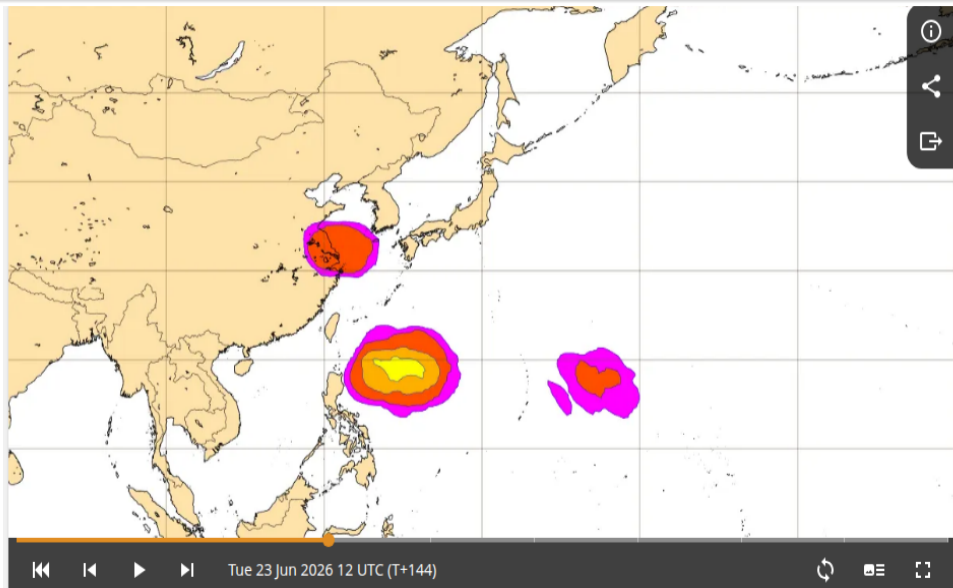
MPI_{BE}, JMAGSM+HIMSST (mb) (00:00:00Z16Jun2026)



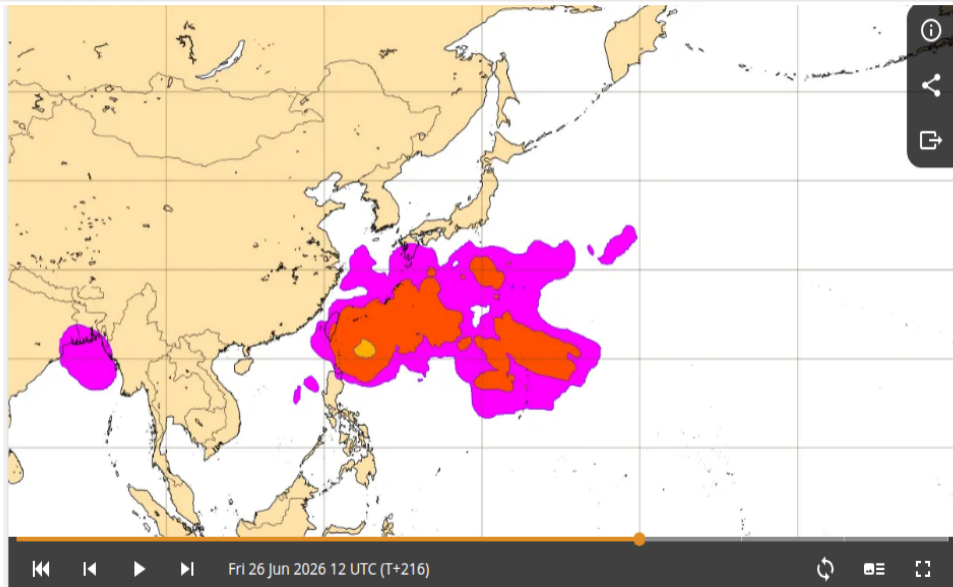
Ocean Heat Content: 06/17/2026



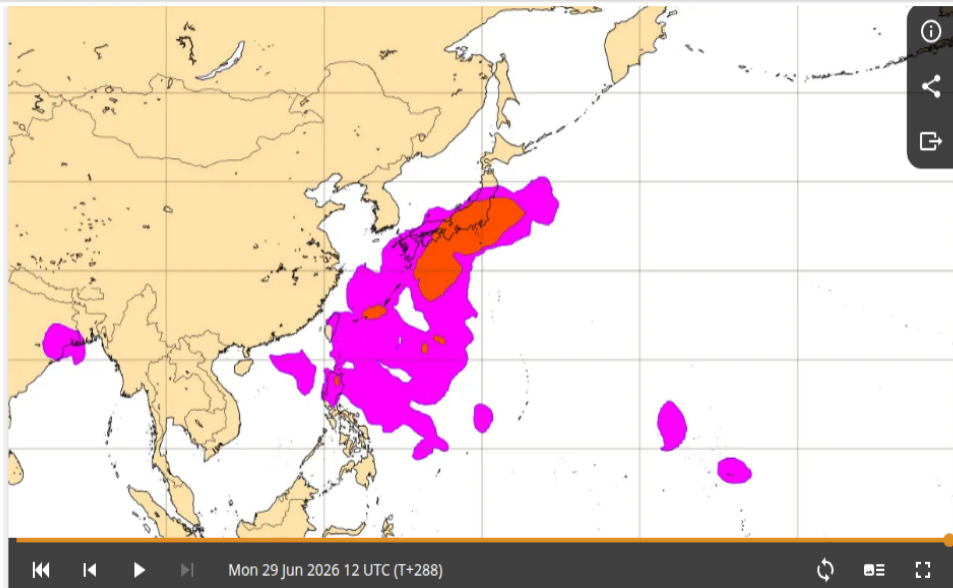
ECMWF TC genesis 06/23 12Z (6 日先) 予報



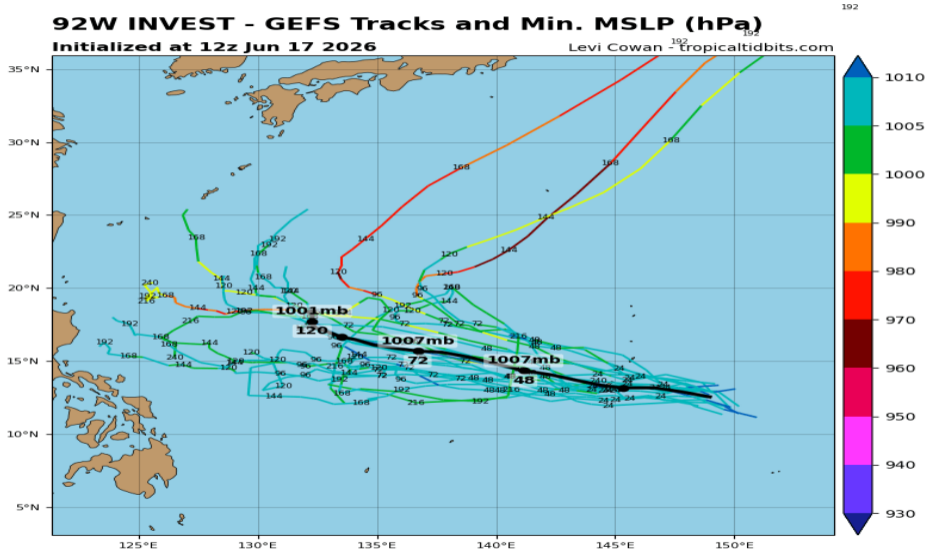
ECMWF TC genesis 06/26 12Z (9 日先) 予報



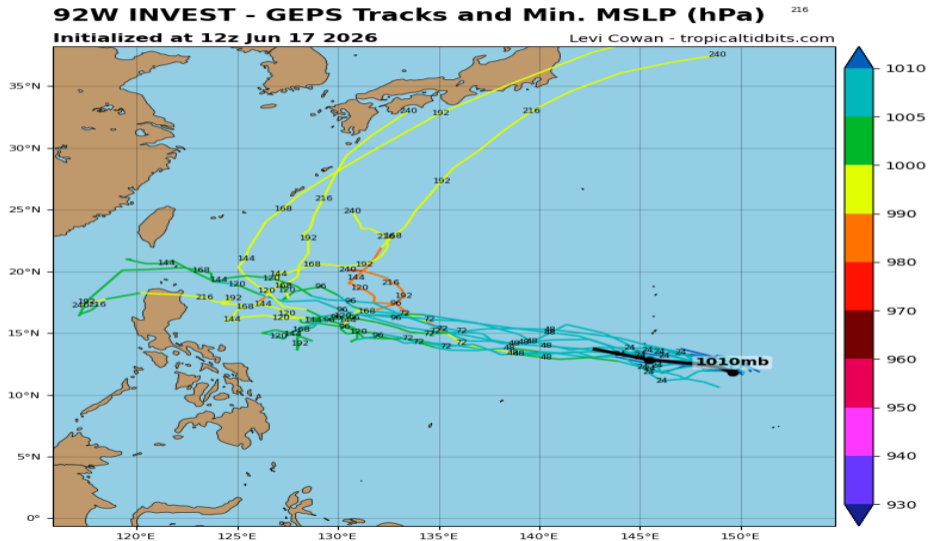
ECMWF TC genesis 06/29 12Z (12 日先) 予報



92W GEFS (06/17 12Z 初期値)



92W GEPS (06/17 12Z 初期値)

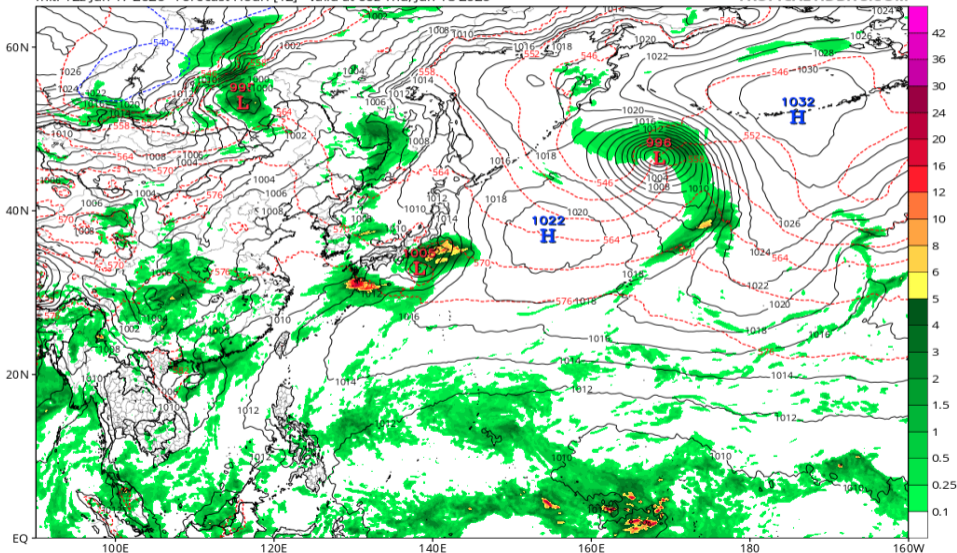


地上気圧配置 (GFS 06/18 00Z 予報)

GFS 6-hour Averaged Precip Rate (mm/hr), MSLP (hPa) & 1000-500mb Thickness (dam)

Init: 12z Jun 17 2026 Forecast Hour: [12] valid at 00z Thu, Jun 18 2026

TROPICALTIDBITS.COM

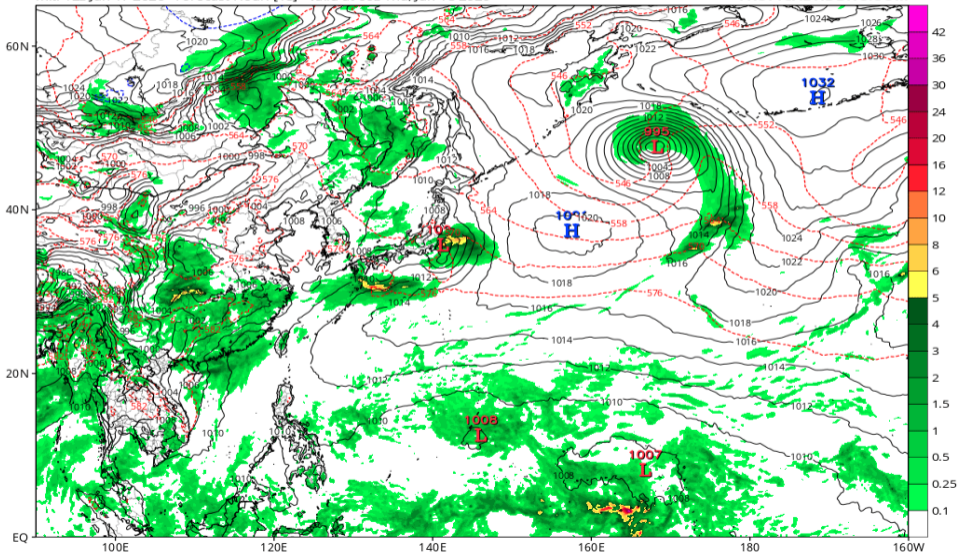


地上気圧配置 (GFS 06/18 06Z 予報)

GFS 6-hour Averaged Precip Rate (mm/hr), MSLP (hPa) & 1000-500mb Thickness (dam)

Init: 12z Jun 17 2026 Forecast Hour: [18] valid at 06z Thu, Jun 18 2026

TROPICALTIDBITS.COM

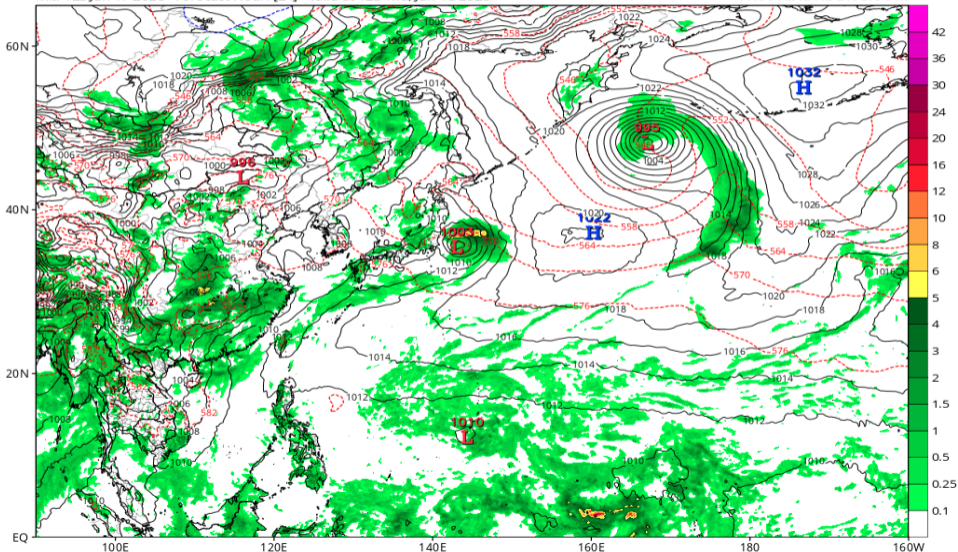


地上気圧配置 (GFS 06/18 12Z 予報)

GFS 6-hour Averaged Precip Rate (mm/hr), MSLP (hPa) & 1000-500mb Thickness (dam)

Init: 12z Jun 17 2026 Forecast Hour: [24] valid at 12z Thu, Jun 18 2026

TROPICALTIDBITS.COM

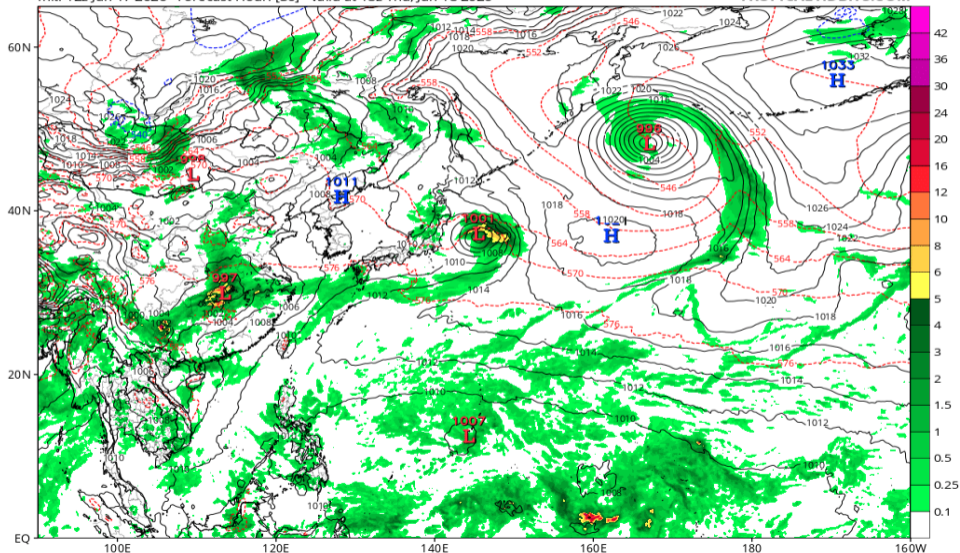


地上気圧配置 (GFS 06/18 18Z 予報)

GFS 6-hour Averaged Precip Rate (mm/hr), MSLP (hPa) & 1000-500mb Thickness (dam)

Init: 12z Jun 17 2026 Forecast Hour: [30] valid at 18z Thu, Jun 18 2026

TROPICALTIDBITS.COM

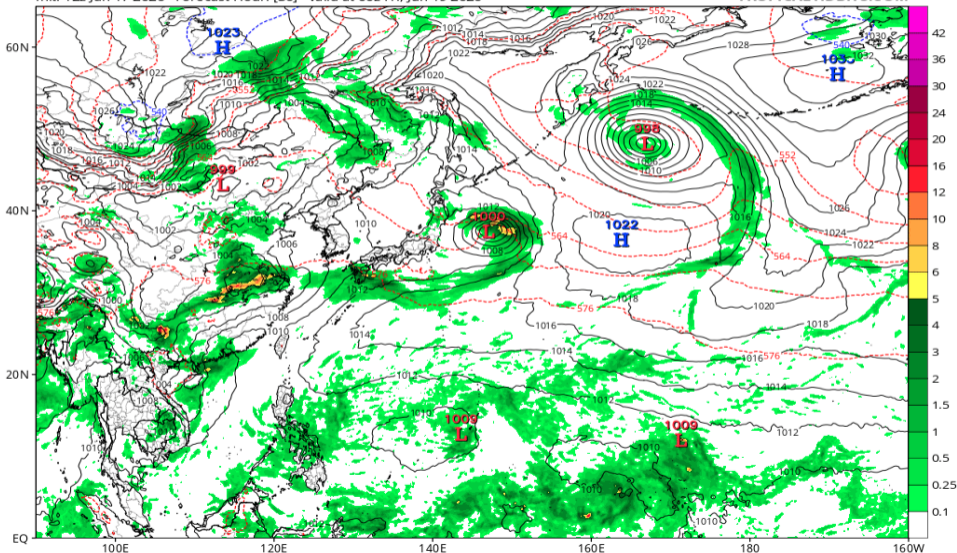


地上気圧配置 (GFS 06/19 00Z 予報)

GFS 6-hour Averaged Precip Rate (mm/hr), MSLP (hPa) & 1000-500mb Thickness (dam)

Init: 12z Jun 17 2026 Forecast Hour: [36] valid at 00z Fri, Jun 19 2026

TROPICALTIDBITS.COM

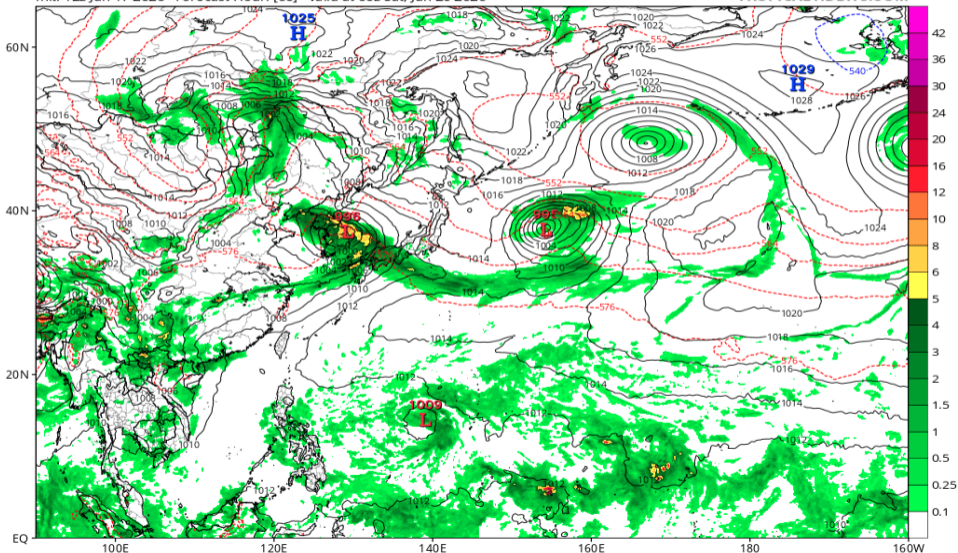


地上気圧配置 (GFS 06/20 00Z 予報)

GFS 6-hour Averaged Precip Rate (mm/hr), MSLP (hPa) & 1000-500mb Thickness (dam)

Init: 12z Jun 17 2026 Forecast Hour: [60] valid at 00z Sat, Jun 20 2026

TROPICALTIDBITS.COM

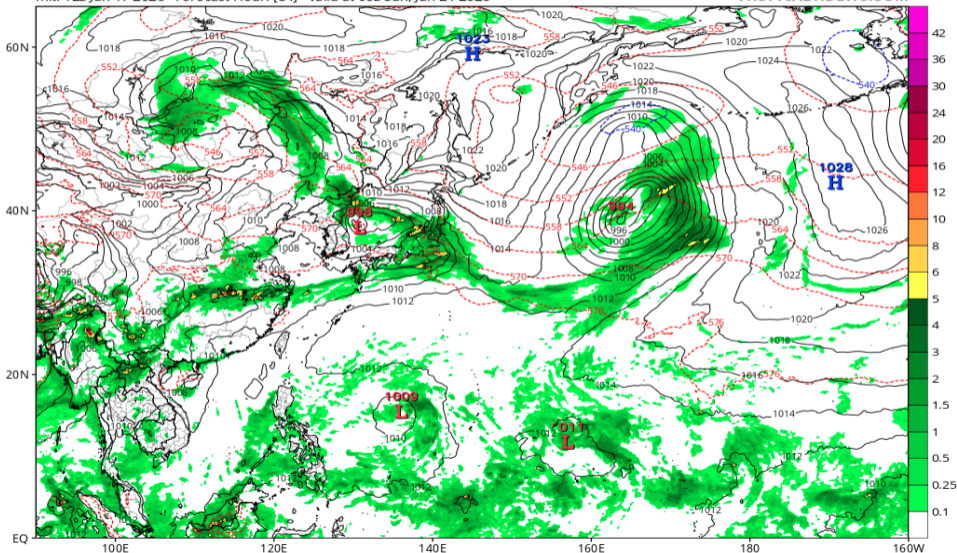


地上気圧配置 (GFS 06/21 00Z 予報)

GFS 6-hour Averaged Precip Rate (mm/hr), MSLP (hPa) & 1000-500mb Thickness (dam)

Init: 12z Jun 17 2026 Forecast Hour: [84] valid at 00z Sun, Jun 21 2026

TROPICALTIDBITS.COM

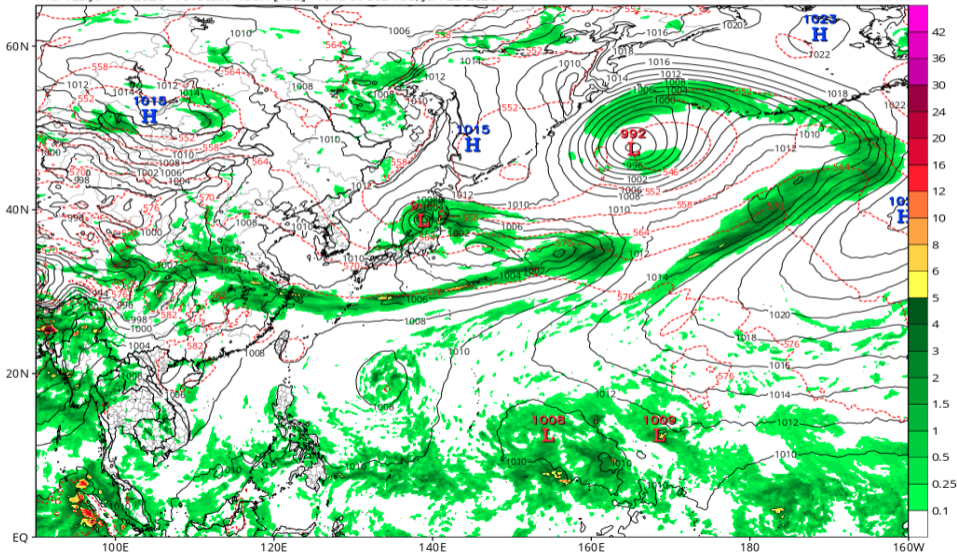


地上気圧配置 (GFS 06/23 00Z 予報)

GFS 6-hour Averaged Precip Rate (mm/hr), MSLP (hPa) & 1000-500mb Thickness (dam)

Init: 12z Jun 17 2026 Forecast Hour: [132] valid at 00z Tue, Jun 23 2026

TROPICALTIDBITS.COM

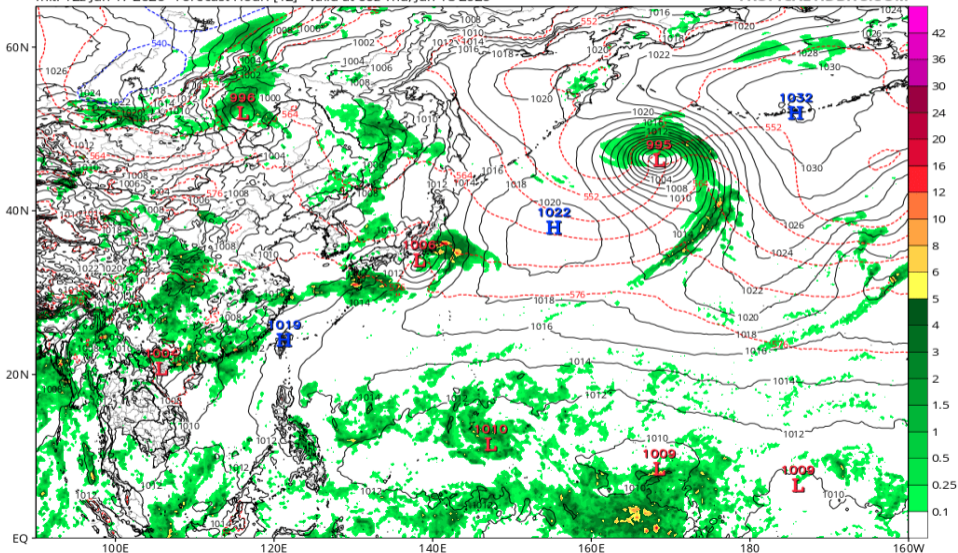


地上気圧配置 (ECMWF 06/18 00Z 予報)

ECMWF Instantaneous Precip Rate (mm/hr), MSLP (hPa) & 1000-500mb Thickness (dam)

Init: 12z Jun 17 2026 Forecast Hour: [12] valid at 00z Thu, Jun 18 2026

TROPICALTIDBITS.COM

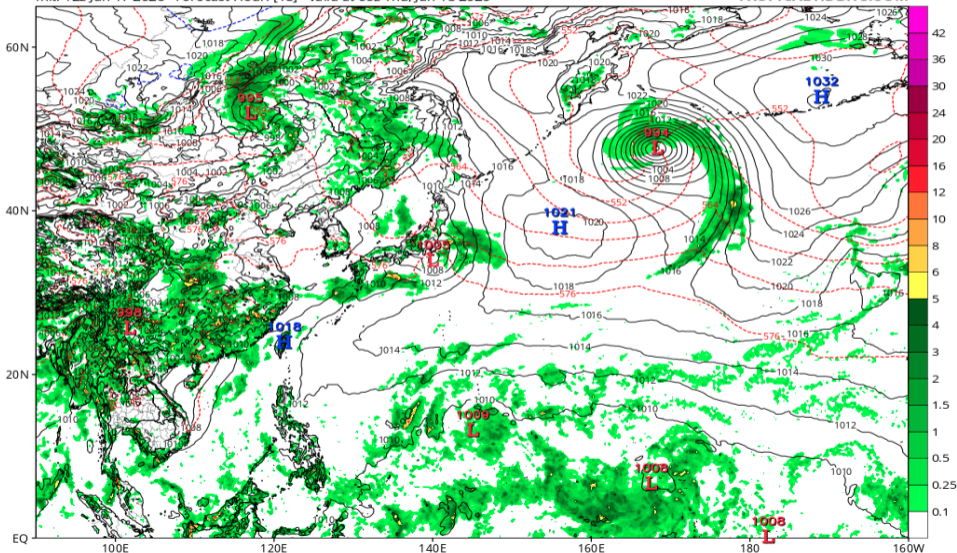


地上気圧配置 (ECMWF 06/18 06Z 予報)

ECMWF Instantaneous Precip Rate (mm/hr), MSLP (hPa) & 1000-500mb Thickness (dam)

Init: 12z Jun 17 2026 Forecast Hour: [18] valid at 06z Thu, Jun 18 2026

TROPICALTIDBITS.COM

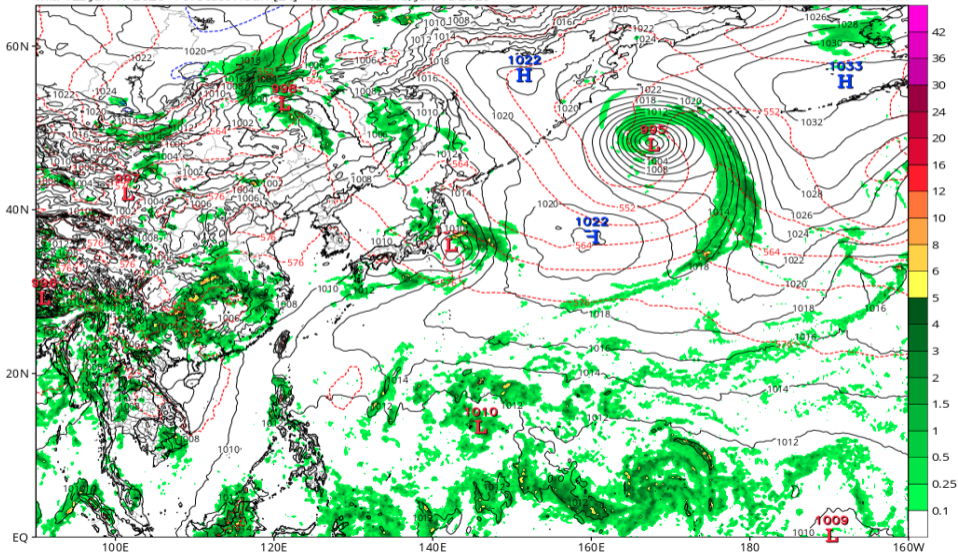


地上気圧配置 (ECMWF 06/18 12Z 予報)

ECMWF Instantaneous Precip Rate (mm/hr), MSLP (hPa) & 1000-500mb Thickness (dam)

Init: 12z Jun 17 2026 Forecast Hour: [24] valid at 12z Thu, Jun 18 2026

TROPICALTIDBITS.COM

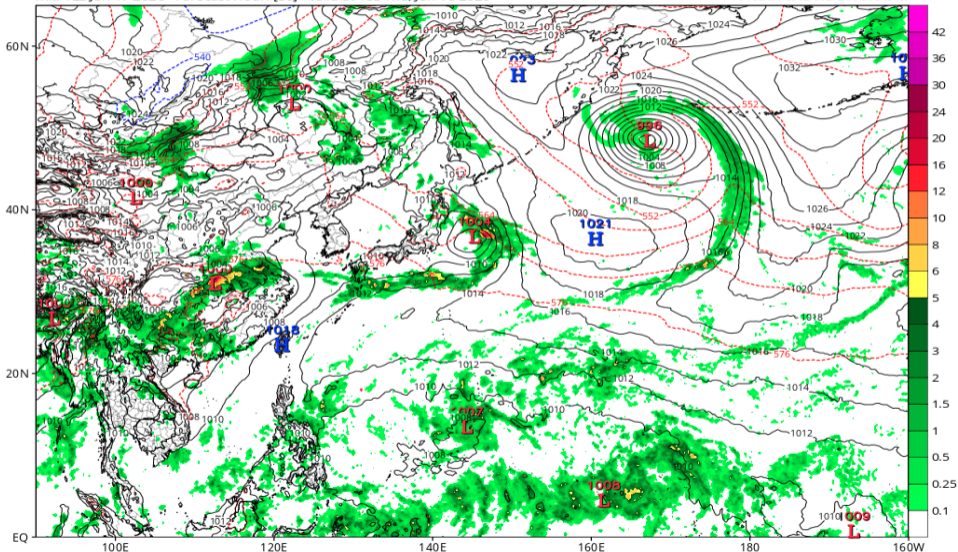


地上気圧配置 (ECMWF 06/18 18Z 予報)

ECMWF Instantaneous Precip Rate (mm/hr), MSLP (hPa) & 1000-500mb Thickness (dam)

Init: 12z Jun 17 2026 Forecast Hour: [30] valid at 18z Thu, Jun 18 2026

TROPICALTIDBITS.COM

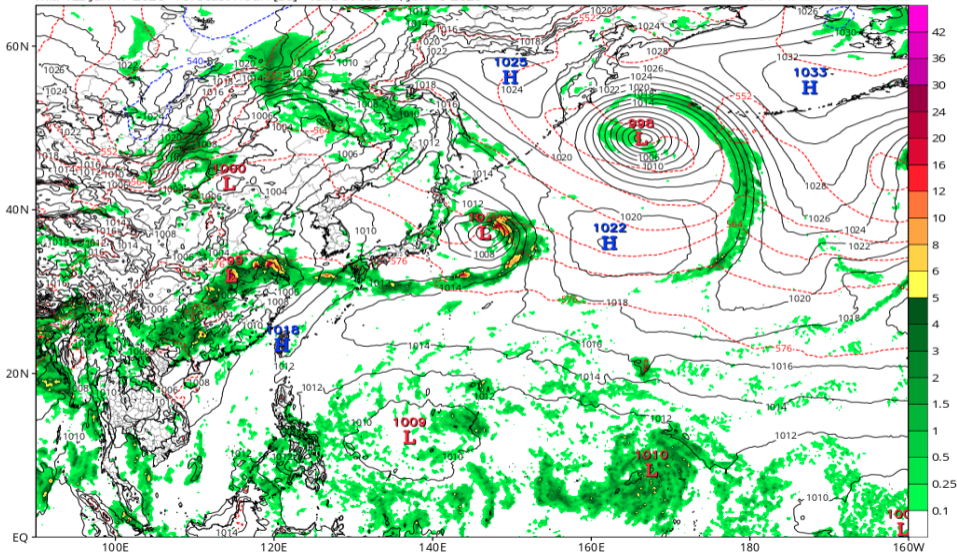


地上気圧配置 (ECMWF 06/19 00Z 予報)

ECMWF Instantaneous Precip Rate (mm/hr), MSLP (hPa) & 1000-500mb Thickness (dam)

Init: 12z Jun 17 2026 Forecast Hour: [36] valid at 00z Fri, Jun 19 2026

TROPICALTIDBITS.COM

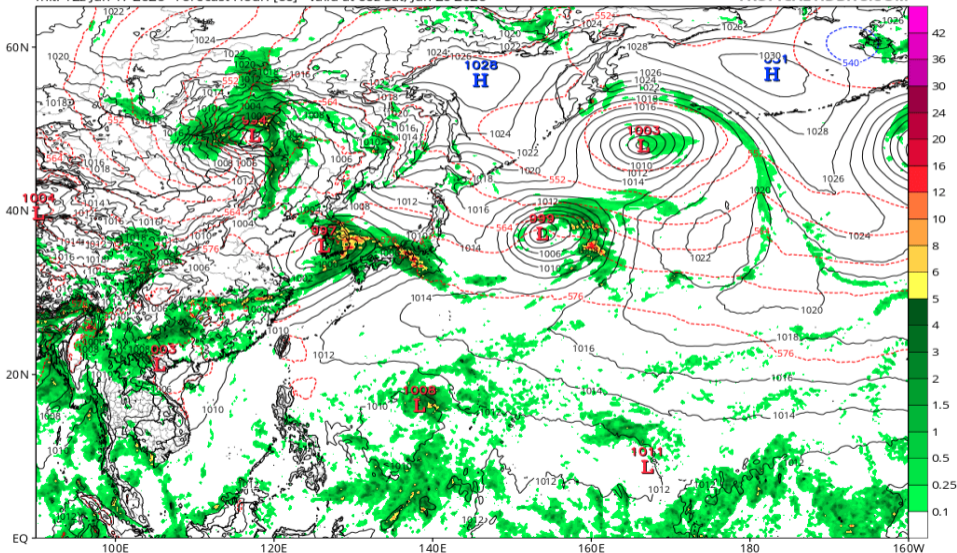


地上気圧配置 (ECMWF 06/20 00Z 予報)

ECMWF Instantaneous Precip Rate (mm/hr), MSLP (hPa) & 1000-500mb Thickness (dam)

Init: 12z Jun 17 2026 Forecast Hour: [60] valid at 00z Sat, Jun 20 2026

TROPICALTIDBITS.COM

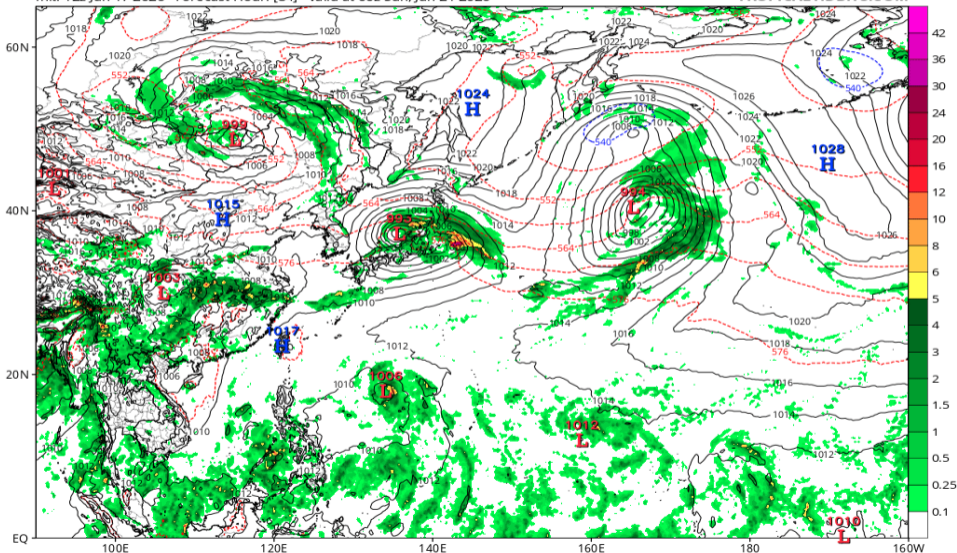


地上気圧配置 (ECMWF 06/21 00Z 予報)

ECMWF Instantaneous Precip Rate (mm/hr), MSLP (hPa) & 1000-500mb Thickness (dam)

Init: 12z Jun 17 2026 Forecast Hour: [84] valid at 00z Sun, Jun 21 2026

TROPICALTIDBITS.COM

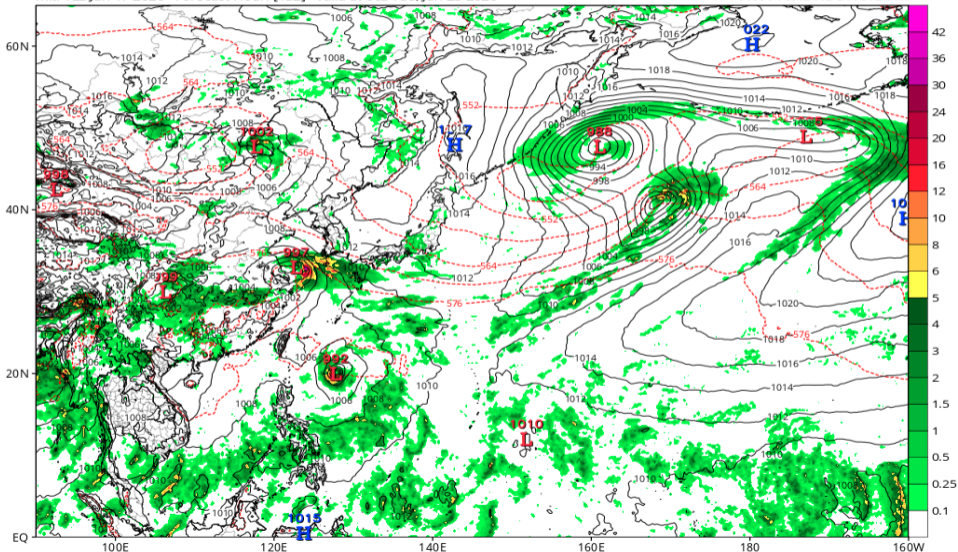


地上気圧配置 (ECMWF 06/23 00Z 予報)

ECMWF Instantaneous Precip Rate (mm/hr), MSLP (hPa) & 1000-500mb Thickness (dam)

Init: 12z Jun 17 2026 Forecast Hour: [132] valid at 00z Tue, Jun 23 2026

TROPICALTIDBITS.COM

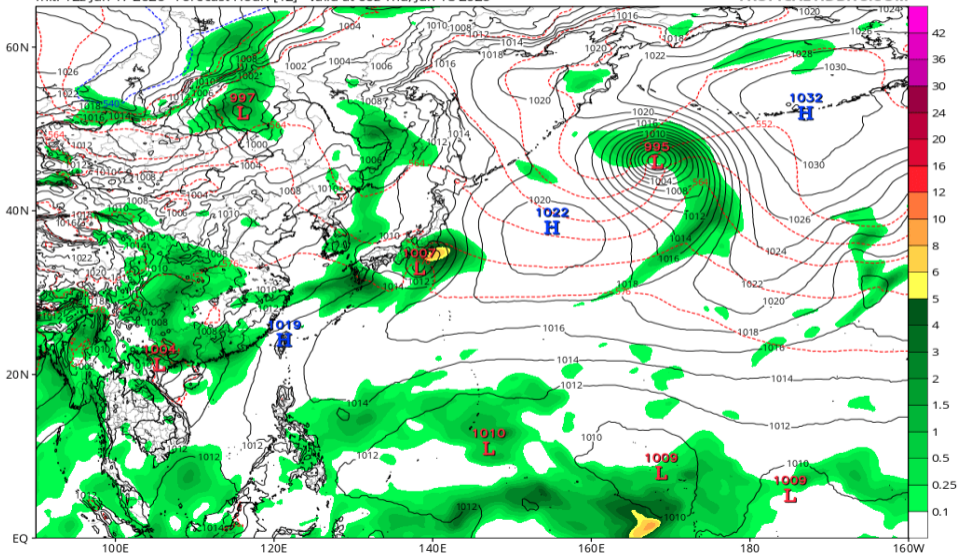


地上気圧配置 (AIFS 06/18 00Z 予報)

EC-AIFS 6-hour Averaged Precip Rate (mm/hr), MSLP (hPa) & 1000-500mb Thickness (dam)

Init: 12z Jun 17 2026 Forecast Hour: [12] valid at 00z Thu, Jun 18 2026

TROPICALTIDBITS.COM

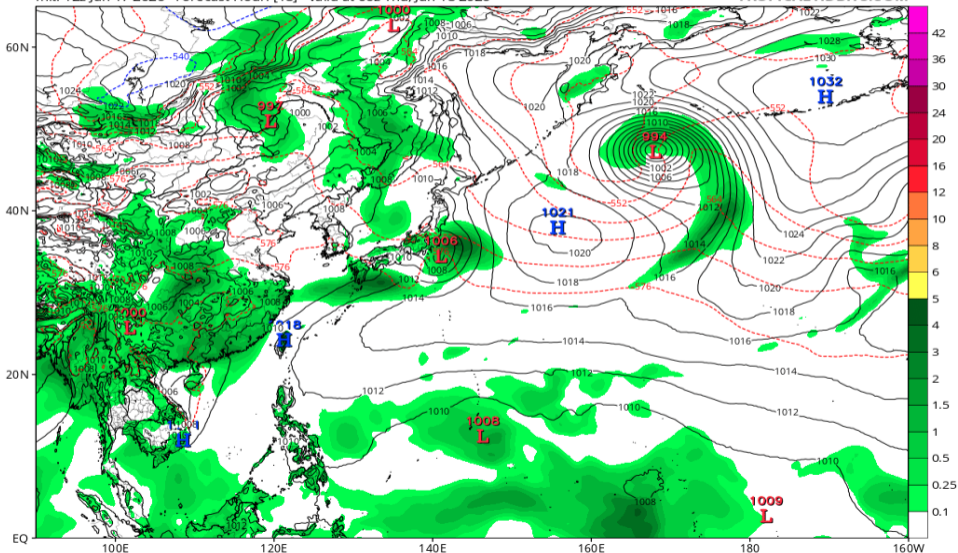


地上気圧配置 (AIFS 06/18 06Z 予報)

EC-AIFS 6-hour Averaged Precip Rate (mm/hr), MSLP (hPa) & 1000-500mb Thickness (dam)

Init: 12z Jun 17 2026 Forecast Hour: [18] valid at 06z Thu, Jun 18 2026

TROPICALTIDBITS.COM

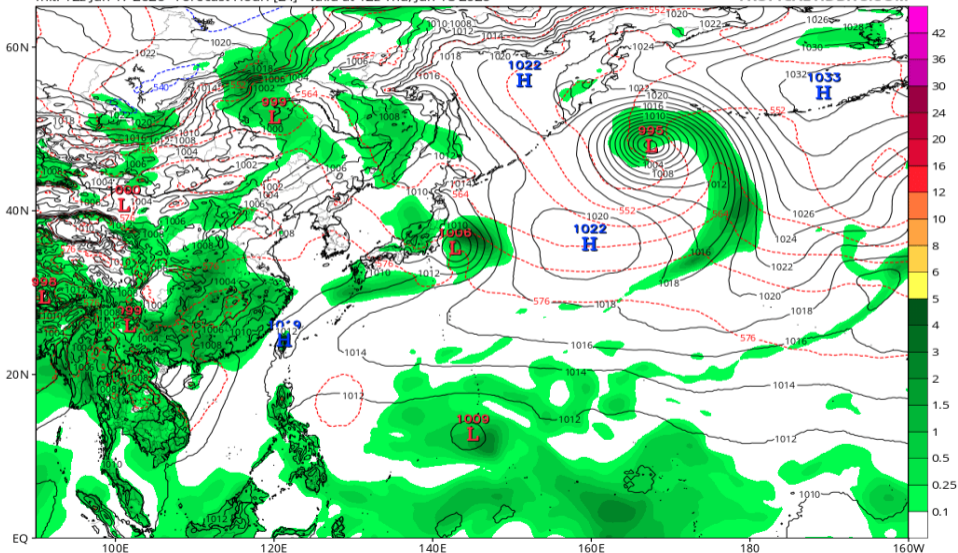


地上気圧配置 (AIFS 06/18 12Z 予報)

EC-AIFS 6-hour Averaged Precip Rate (mm/hr), MSLP (hPa) & 1000-500mb Thickness (dam)

Init: 12z Jun 17 2026 Forecast Hour: [24] valid at 12z Thu, Jun 18 2026

TROPICALTIDBITS.COM

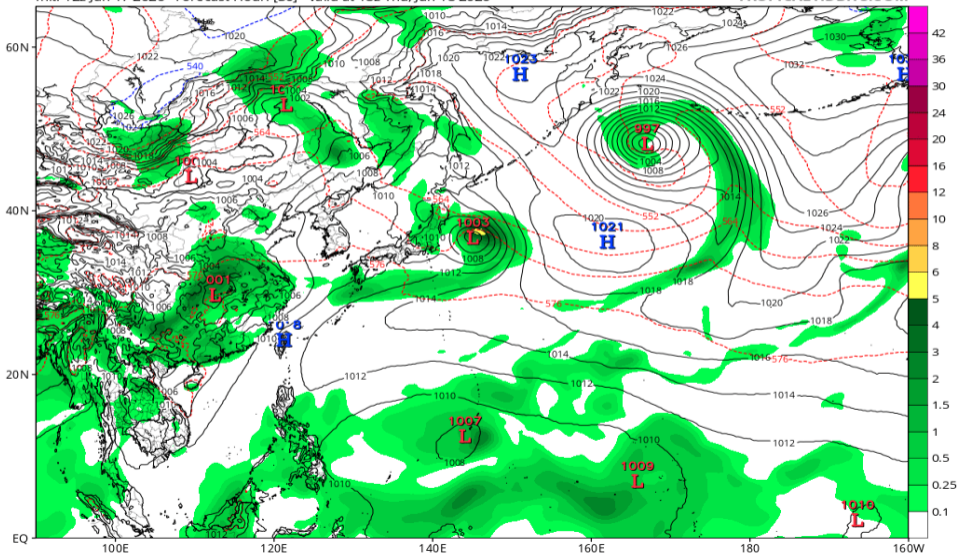


地上気圧配置 (AIFS 06/18 18Z 予報)

EC-AIFS 6-hour Averaged Precip Rate (mm/hr), MSLP (hPa) & 1000-500mb Thickness (dam)

Init: 12z Jun 17 2026 Forecast Hour: [30] valid at 18z Thu, Jun 18 2026

TROPICALTIDBITS.COM

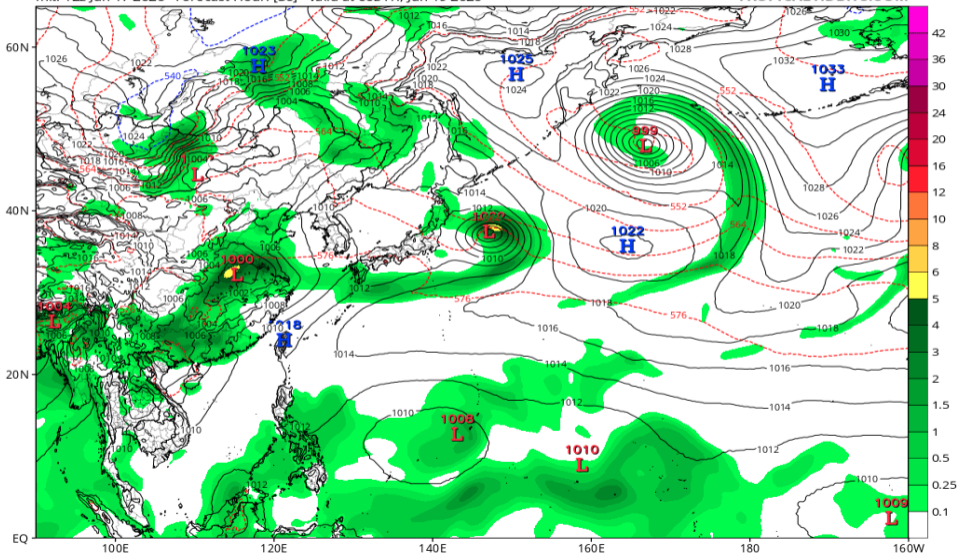


地上気圧配置 (AIFS 06/19 00Z 予報)

EC-AIFS 6-hour Averaged Precip Rate (mm/hr), MSLP (hPa) & 1000-500mb Thickness (dam)

Init: 12z Jun 17 2026 Forecast Hour: [36] valid at 00z Fri, Jun 19 2026

TROPICALTIDBITS.COM

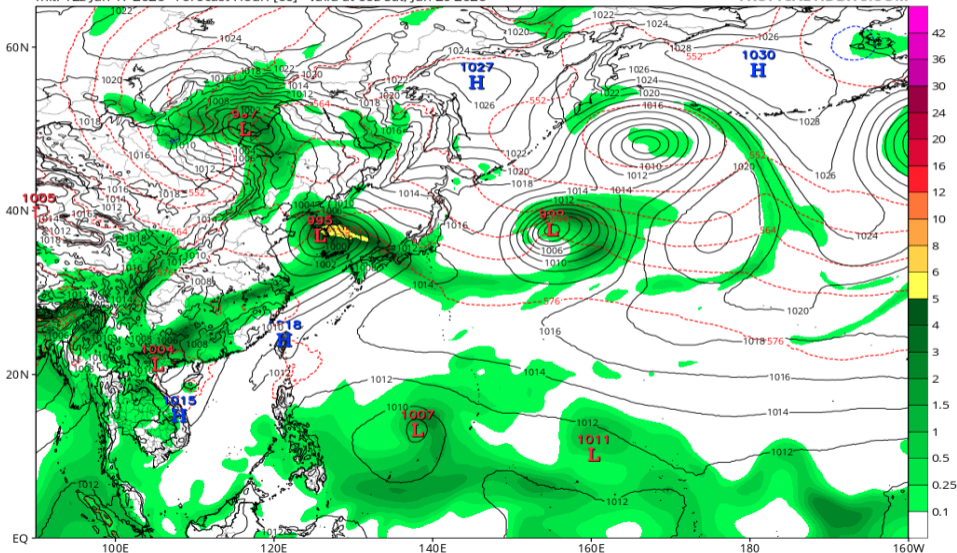


地上気圧配置 (AIFS 06/20 00Z 予報)

EC-AIFS 6-hour Averaged Precip Rate (mm/hr), MSLP (hPa) & 1000-500mb Thickness (dam)

Init: 12z Jun 17 2026 Forecast Hour: [60] valid at 00z Sat, Jun 20 2026

TROPICALTIDBITS.COM

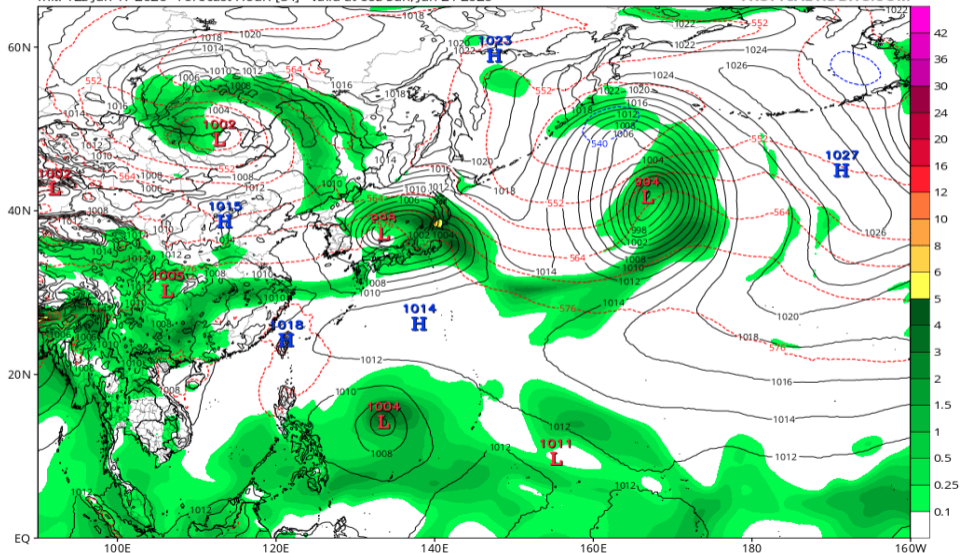


地上気圧配置 (AIFS 06/21 00Z 予報)

EC-AIFS 6-hour Averaged Precip Rate (mm/hr), MSLP (hPa) & 1000-500mb Thickness (dam)

Init: 12z Jun 17 2026 Forecast Hour: [84] valid at 00z Sun, Jun 21 2026

TROPICALTIDBITS.COM

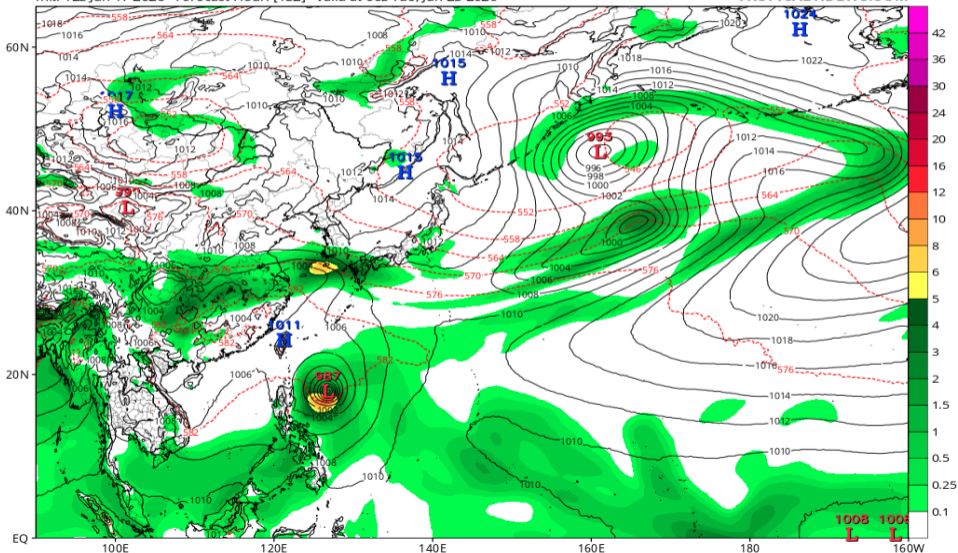


地上気圧配置 (AIFS 06/23 00Z 予報)

EC-AIFS 6-hour Averaged Precip Rate (mm/hr), MSLP (hPa) & 1000-500mb Thickness (dam)

Init: 12z Jun 17 2026 Forecast Hour: [132] valid at 00z Tue, Jun 23 2026

TROPICALTIDBITS.COM

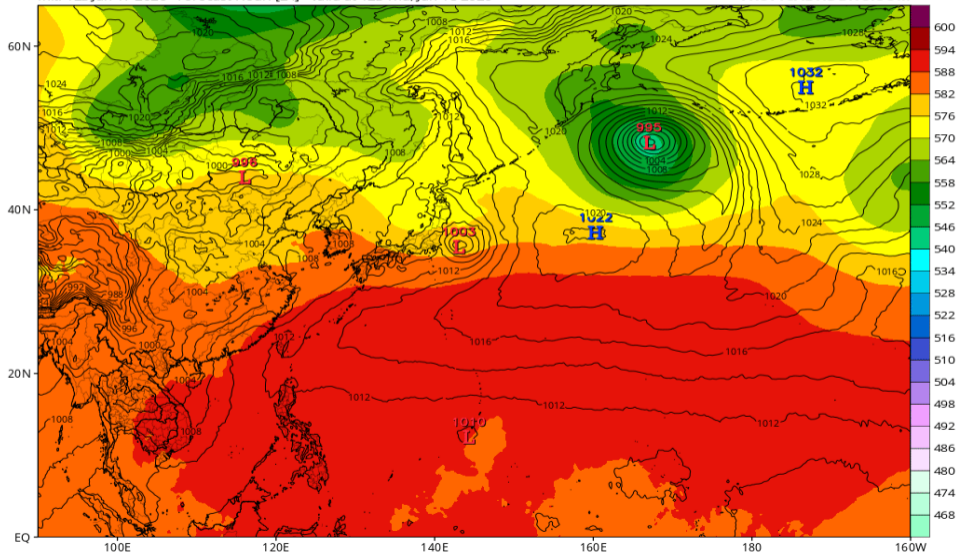


Z500/地上気圧配置 (GFS 06/18 12Z 予報)

GFS 500mb Geopotential Height (dam) & MSLP (mb)

Init: 12z Jun 17 2026 Forecast Hour: [24] valid at 12z Thu, Jun 18 2026

TROPICALTIDBITS.COM

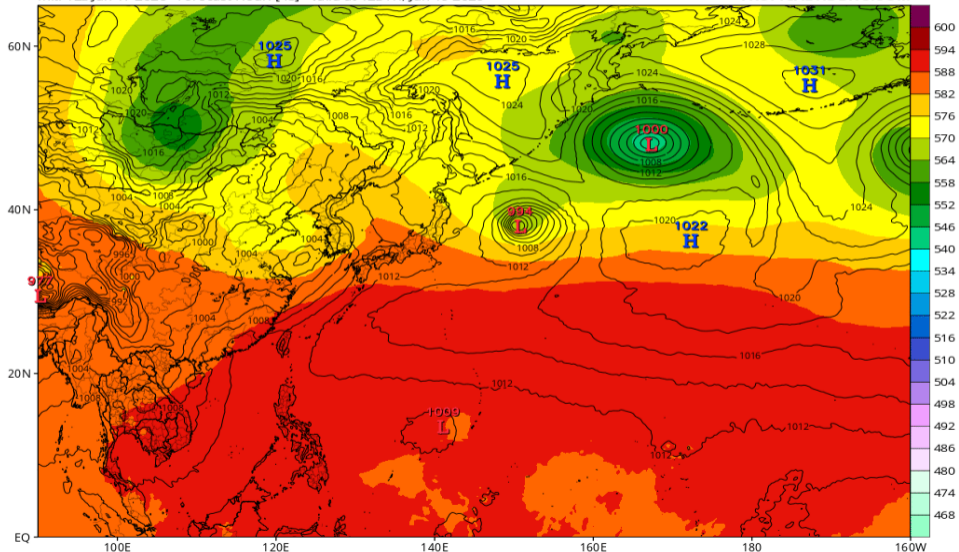


Z500/地上気圧配置 (GFS 06/19 12Z 予報)

GFS 500mb Geopotential Height (dam) & MSLP (mb)

Init: 12z Jun 17 2026 Forecast Hour: [48] valid at 12z Fri, Jun 19 2026

TROPICALTIDBITS.COM

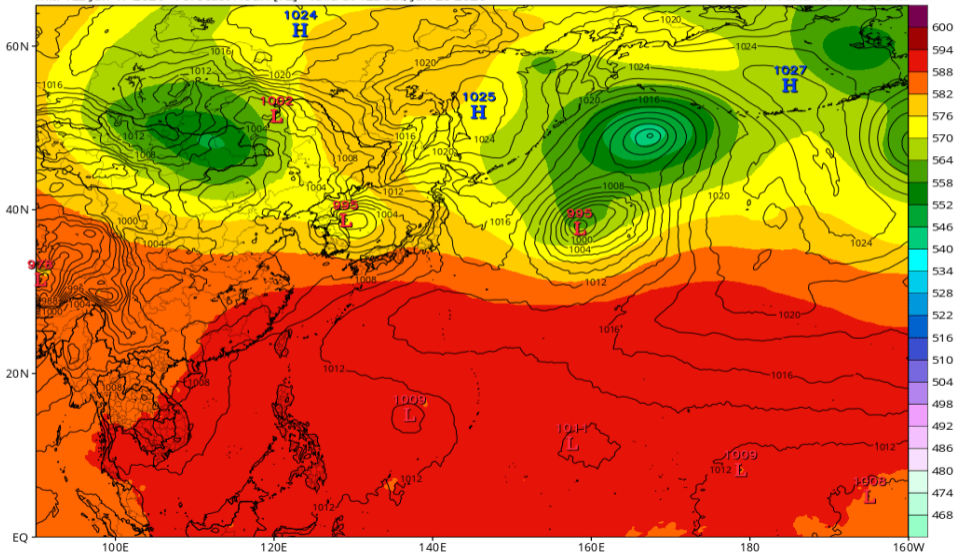


Z500/地上気圧配置 (GFS 06/20 12Z 予報)

GFS 500mb Geopotential Height (dam) & MSLP (mb)

Init: 12z Jun 17 2026 Forecast Hour: [72] valid at 12z Sat, Jun 20 2026

TROPICALTIDBITS.COM

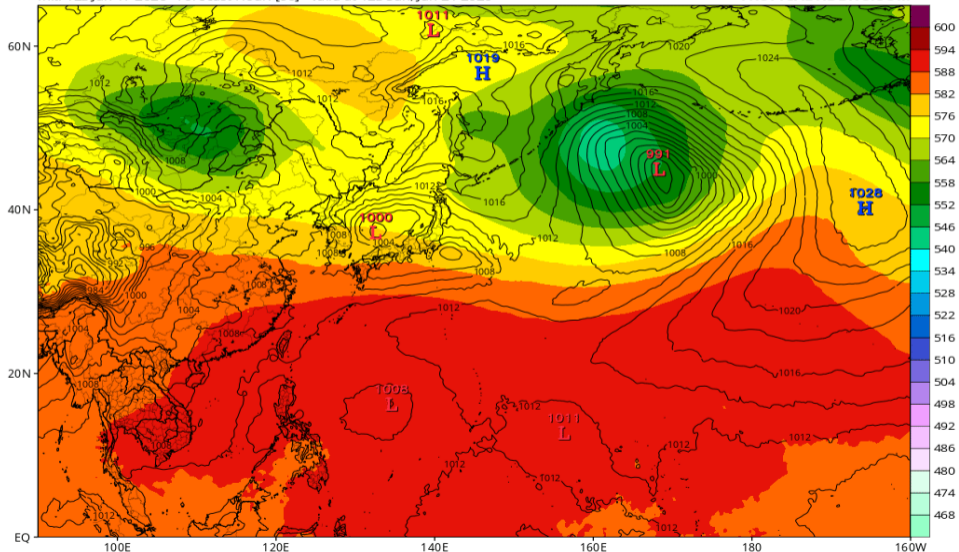


Z500/地上気圧配置 (GFS 06/21 12Z 予報)

GFS 500mb Geopotential Height (dam) & MSLP (mb)

Init: 12z Jun 17 2026 Forecast Hour: [96] valid at 12z Sun, Jun 21 2026

TROPICALTIDBITS.COM

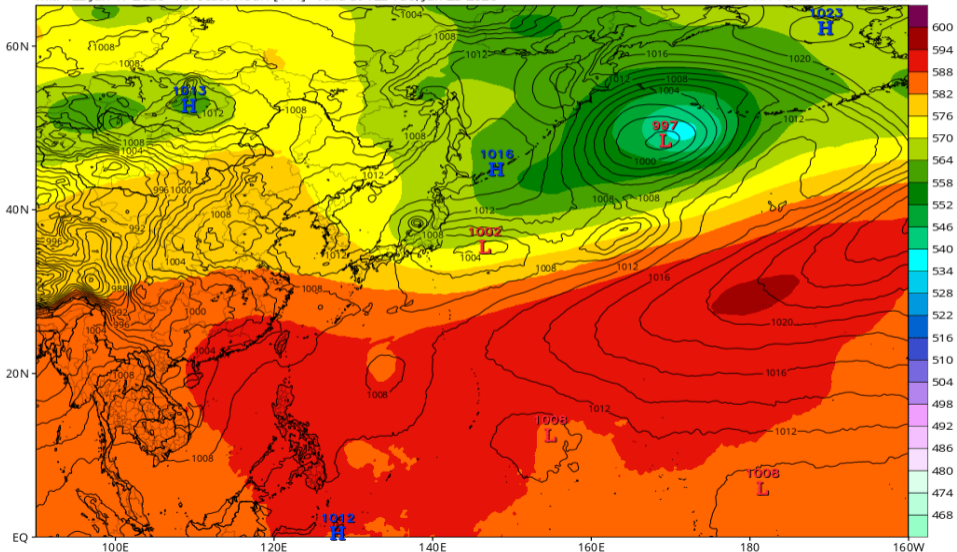


Z500/地上気圧配置 (GFS 06/23 12Z 予報)

GFS 500mb Geopotential Height (dam) & MSLP (mb)

Init: 12z Jun 17 2026 Forecast Hour: [144] valid at 12z Tue, Jun 23 2026

TROPICALTIDBITS.COM

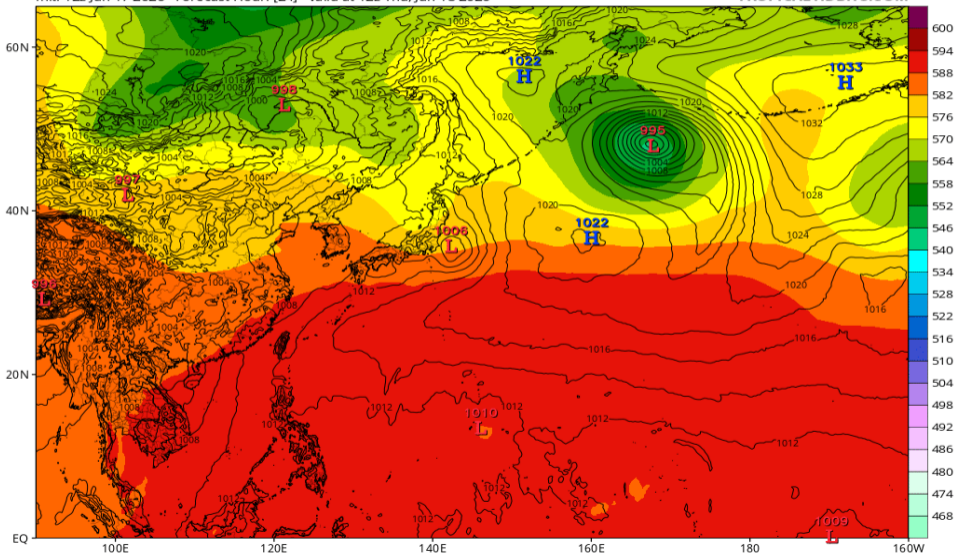


Z500/地上気圧配置 (ECMWF 06/18 12Z 予報)

ECMWF 500mb Geopotential Height (dam) & MSLP (mb)

Init: 12z Jun 17 2026 Forecast Hour: [24] valid at 12z Thu, Jun 18 2026

TROPICALTIDBITS.COM

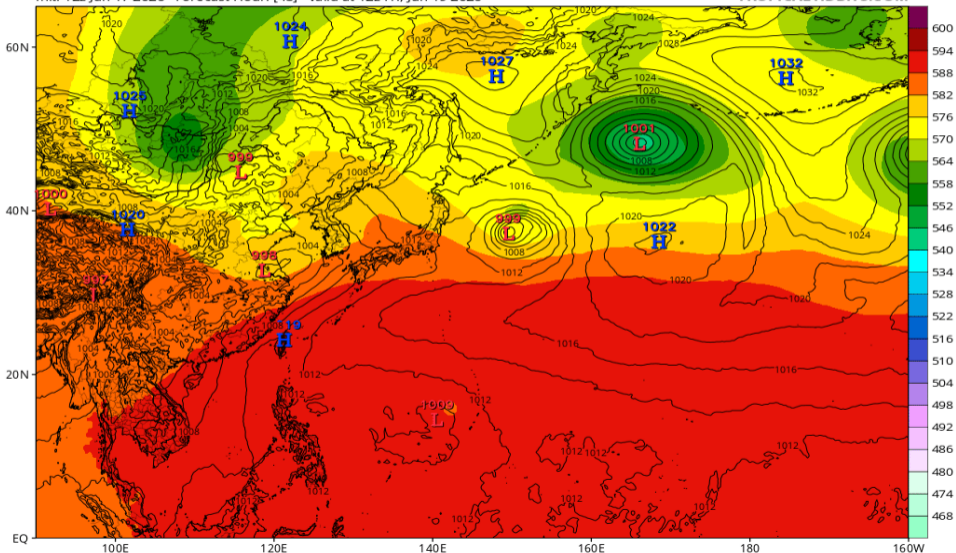


Z500/地上気圧配置 (ECMWF 06/19 12Z 予報)

ECMWF 500mb Geopotential Height (dam) & MSLP (mb)

Init: 12z Jun 17 2026 Forecast Hour: [48] valid at 12z Fri, Jun 19 2026

TROPICALTIDBITS.COM

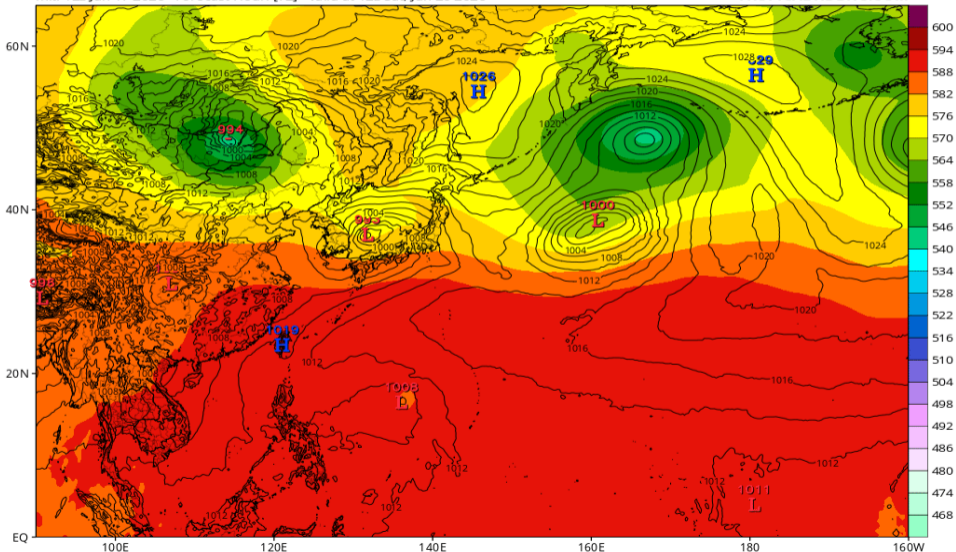


Z500/地上気圧配置 (ECMWF 06/20 12Z 予報)

ECMWF 500mb Geopotential Height (dam) & MSLP (mb)

Init: 12z Jun 17 2026 Forecast Hour: [72] valid at 12z Sat, Jun 20 2026

TROPICALTIDBITS.COM

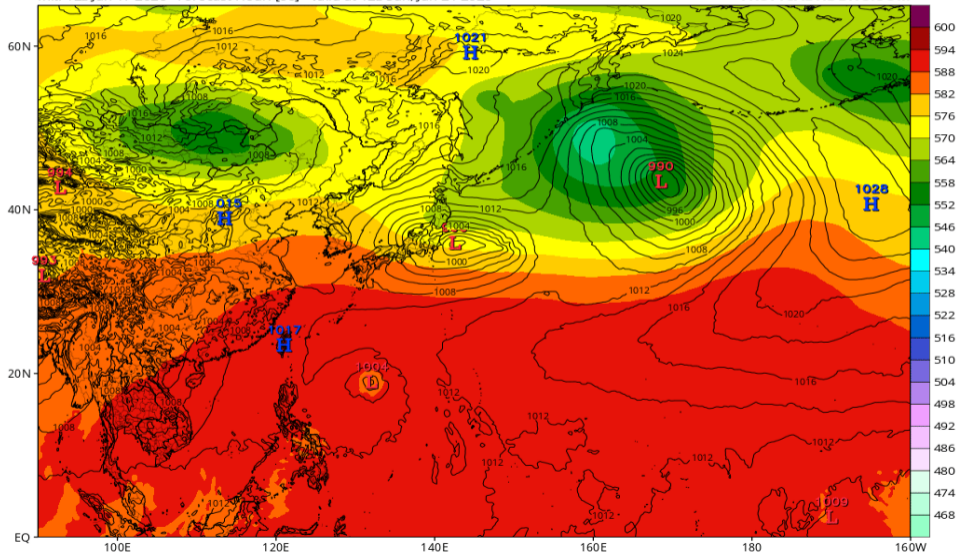


Z500/地上気圧配置 (ECMWF 06/21 12Z 予報)

ECMWF 500mb Geopotential Height (dam) & MSLP (mb)

Init: 12z Jun 17 2026 Forecast Hour: [96] valid at 12z Sun, Jun 21 2026

TROPICALTIDBITS.COM

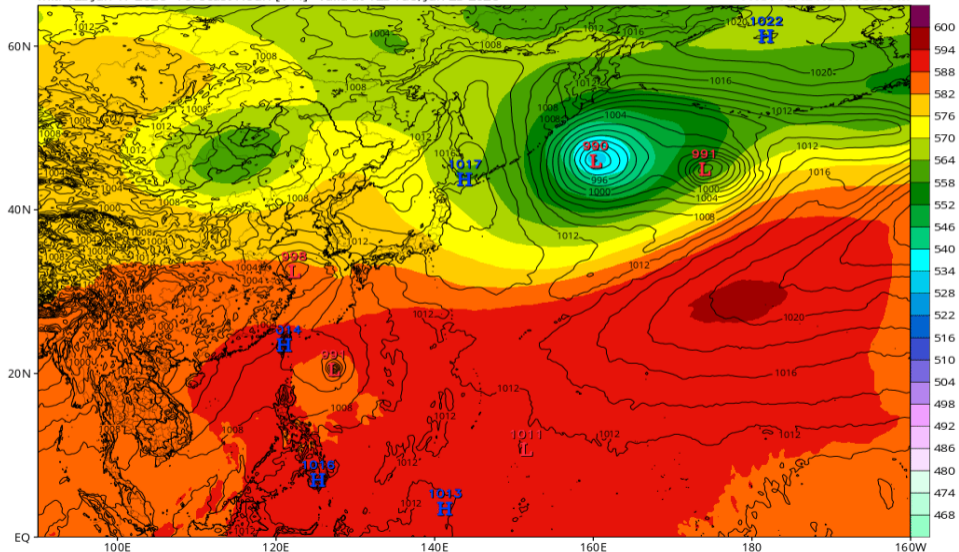


Z500/地上気圧配置 (ECMWF 06/23 12Z 予報)

ECMWF 500mb Geopotential Height (dam) & MSLP (mb)

Init: 12z Jun 17 2026 Forecast Hour: [144] valid at 12z Tue, Jun 23 2026

TROPICALTIDBITS.COM

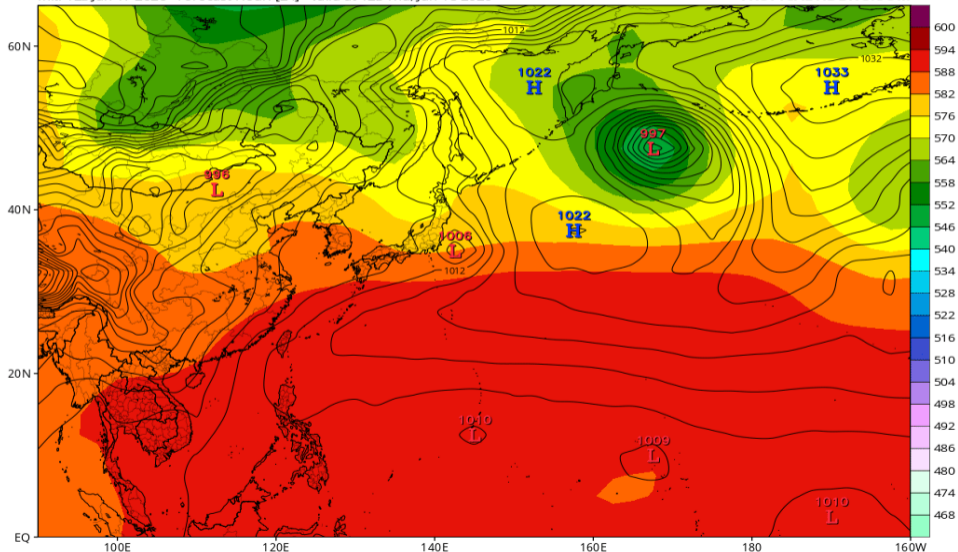


Z500/地上気圧配置 (JMA-GSM 06/18 12Z 予報)

JMA 500mb Geopotential Height (dam) & MSLP (mb)

Init: 12z Jun 17 2026 Forecast Hour: [24] valid at 12z Thu, Jun 18 2026

TROPICALTIDBITS.COM

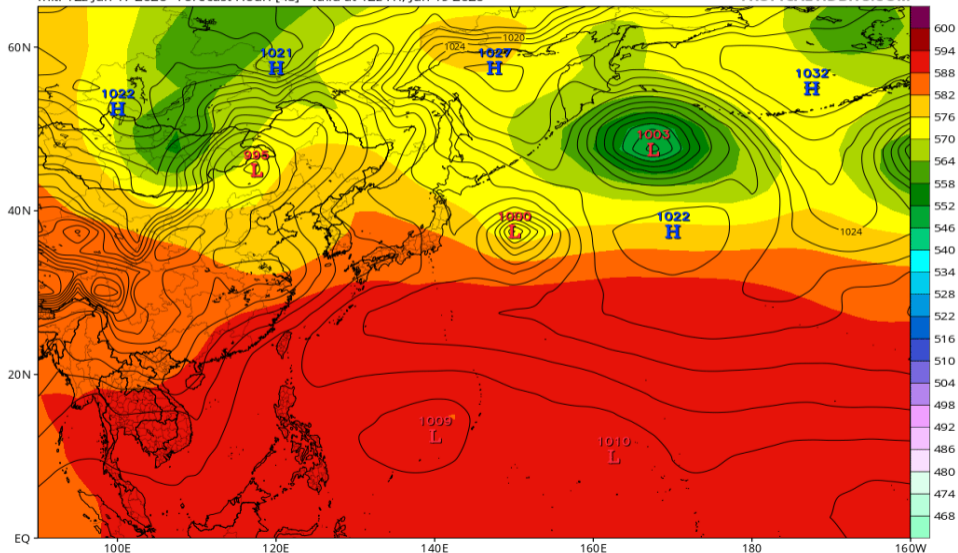


Z500/地上気圧配置 (JMA-GSM 06/19 12Z 予報)

JMA 500mb Geopotential Height (dam) & MSLP (mb)

Init: 12z Jun 17 2026 Forecast Hour: [48] valid at 12z Fri, Jun 19 2026

TROPICALTIDBITS.COM

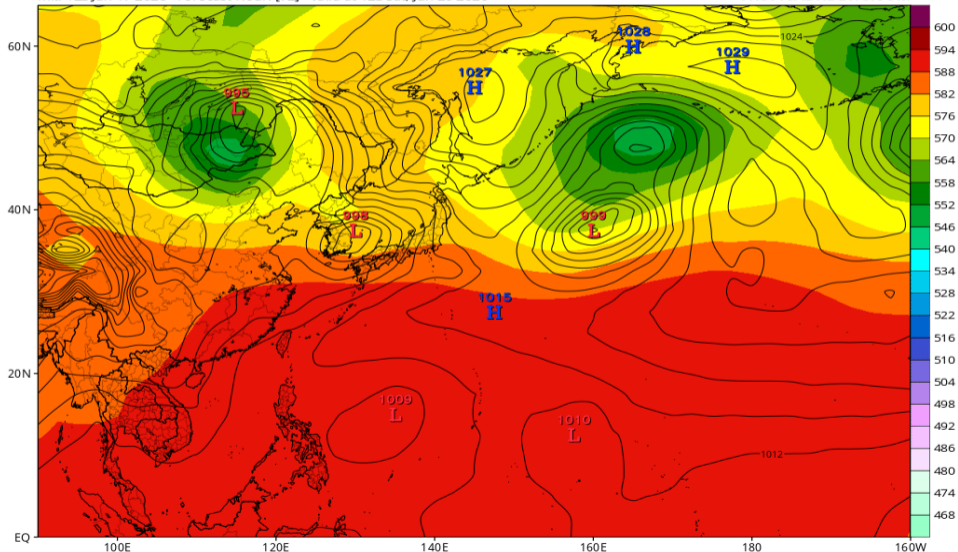


Z500/地上気圧配置 (JMA-GSM 06/20 12Z 予報)

JMA 500mb Geopotential Height (dam) & MSLP (mb)

Init: 12z Jun 17 2026 Forecast Hour: [72] valid at 12z Sat, Jun 20 2026

TROPICALTIDBITS.COM

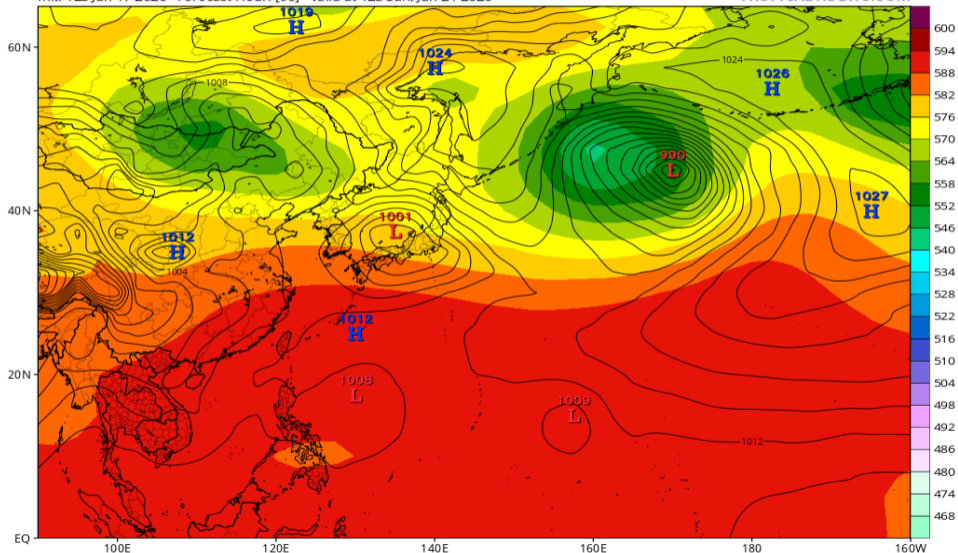


Z500/地上気圧配置 (JMA-GSM 06/21 12Z 予報)

JMA 500mb Geopotential Height (dam) & MSLP (mb)

Init: 12z Jun 17 2026 Forecast Hour: [96] valid at 12z Sun, Jun 21 2026

TROPICALTIDBITS.COM

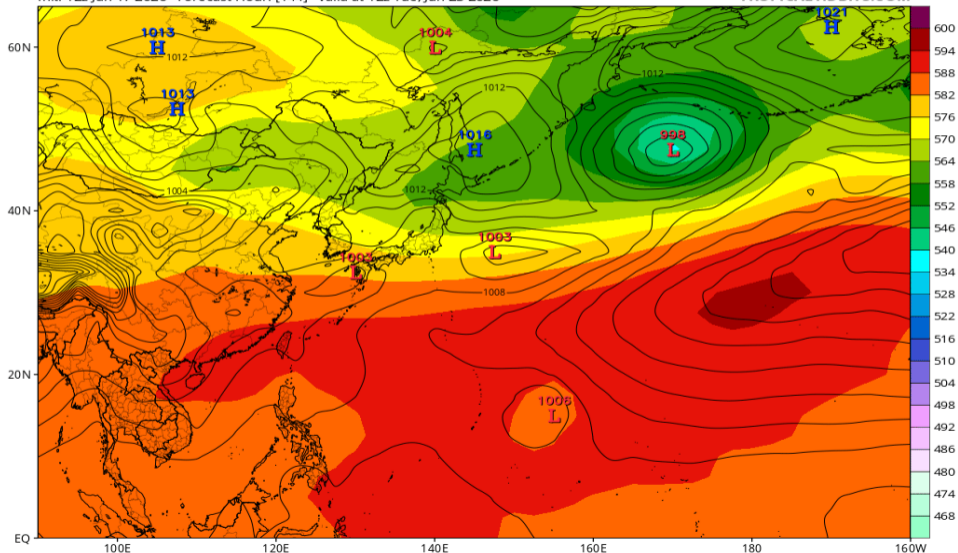


Z500/地上気圧配置 (JMA-GSM 06/23 12Z 予報)

JMA 500mb Geopotential Height (dam) & MSLP (mb)

Init: 12z Jun 17 2026 Forecast Hour: [144] valid at 12z Tue, Jun 23 2026

TROPICALTIDBITS.COM

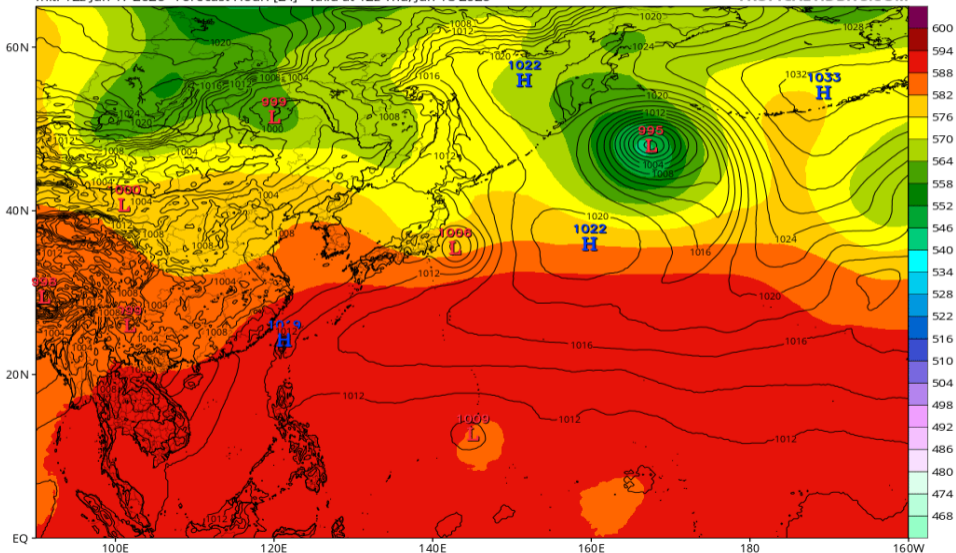


Z500/地上気圧配置 (AIFS 06/18 12Z 予報)

EC-AIFS 500mb Geopotential Height (dam) & MSLP (mb)

Init: 12z Jun 17 2026 Forecast Hour: [24] valid at 12z Thu, Jun 18 2026

TROPICALTIDBITS.COM

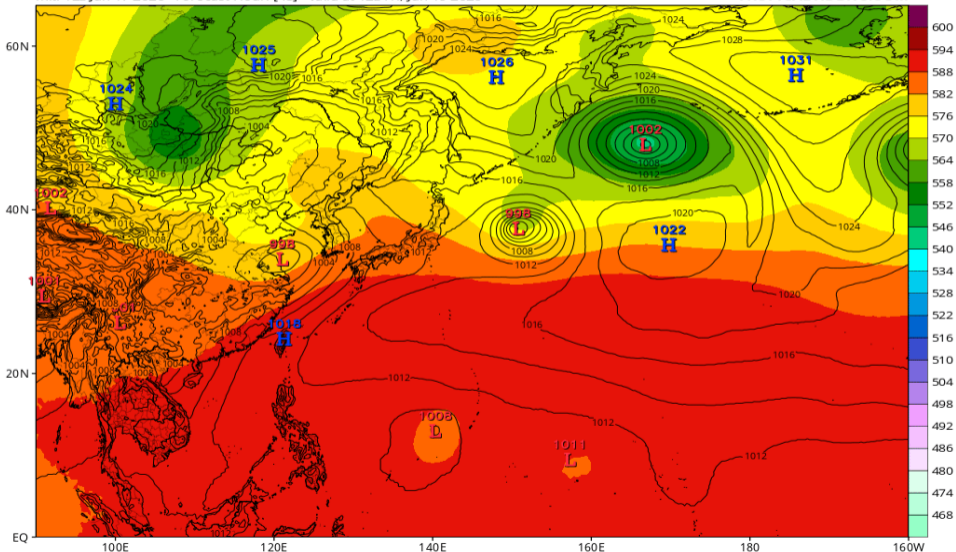


Z500/地上気圧配置 (AIFS 06/19 12Z 予報)

EC-AIFS 500mb Geopotential Height (dam) & MSLP (mb)

Init: 12z Jun 17 2026 Forecast Hour: [48] valid at 12z Fri, Jun 19 2026

TROPICALTIDBITS.COM

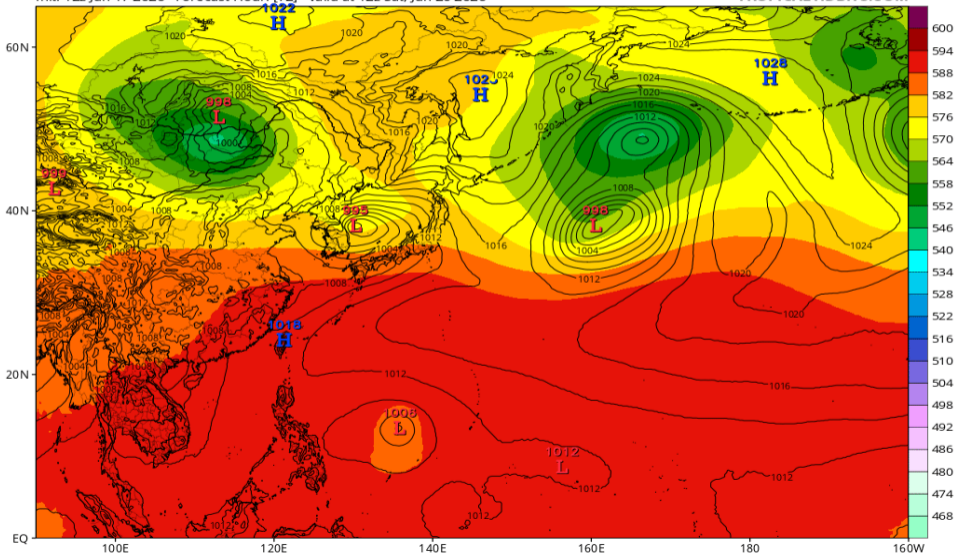


Z500/地上気圧配置 (AIFS 06/20 12Z 予報)

EC-AIFS 500mb Geopotential Height (dam) & MSLP (mb)

Init: 12z Jun 17 2026 Forecast Hour: [72] valid at 12z Sat, Jun 20 2026

TROPICALTIDBITS.COM

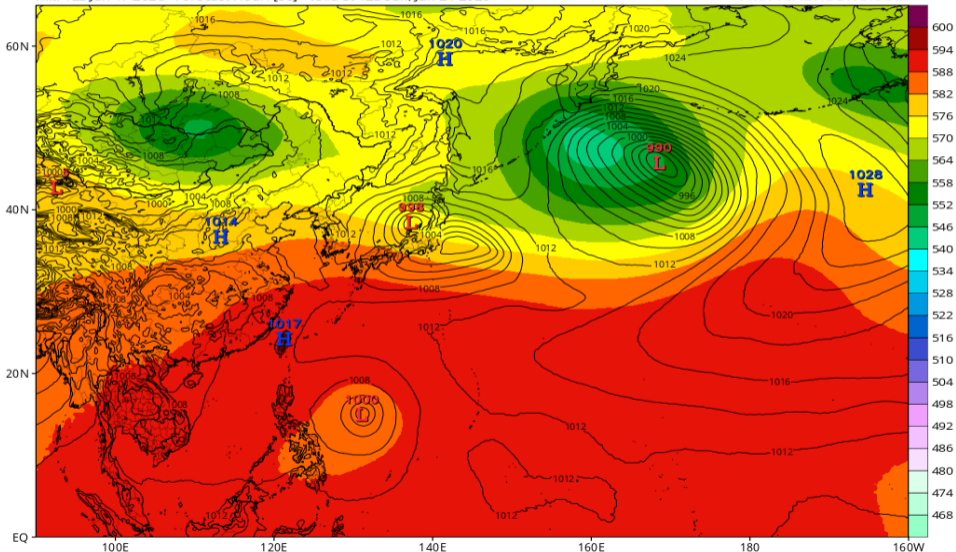


Z500/地上気圧配置 (AIFS 06/21 12Z 予報)

EC-AIFS 500mb Geopotential Height (dam) & MSLP (mb)

Init: 12z Jun 17 2026 Forecast Hour: [96] valid at 12z Sun, Jun 21 2026

TROPICALTIDBITS.COM

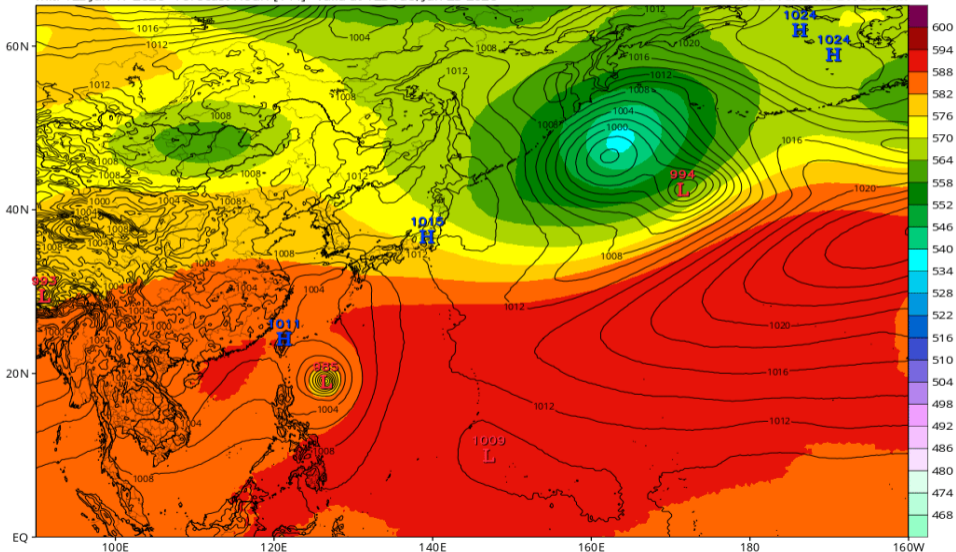


Z500/地上気圧配置 (AIFS 06/23 12Z 予報)

EC-AIFS 500mb Geopotential Height (dam) & MSLP (mb)

Init: 12z Jun 17 2026 Forecast Hour: [144] valid at 12z Tue, Jun 23 2026

TROPICALTIDBITS.COM

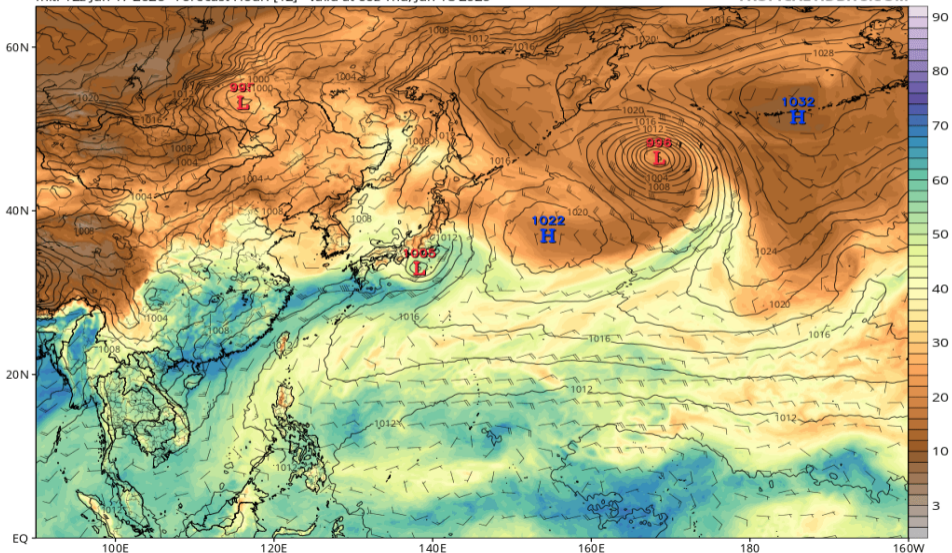


可降水量 (GFS 06/18 00Z 予報)

GFS MSLP (mb), Total Precipitable Water (mm), and 850mb Wind (kt)

Init: 12z Jun 17 2026 Forecast Hour: [12] valid at 00z Thu, Jun 18 2026

TROPICALTIDBITS.COM

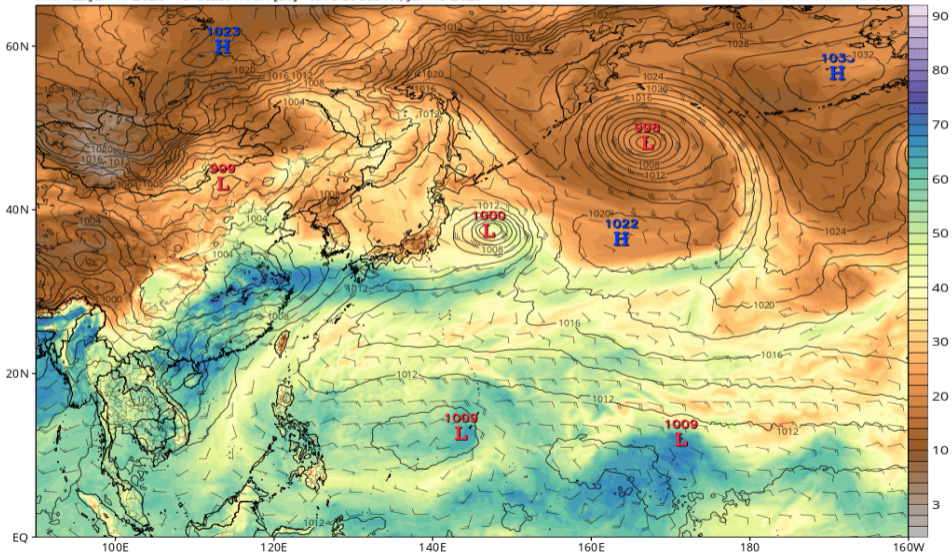


可降水量 (GFS 06/19 00Z 予報)

GFS MSLP (mb), Total Precipitable Water (mm), and 850mb Wind (kt)

Init: 12z Jun 17 2026 Forecast Hour: [36] valid at 00z Fri, Jun 19 2026

TROPICALTIDBITS.COM

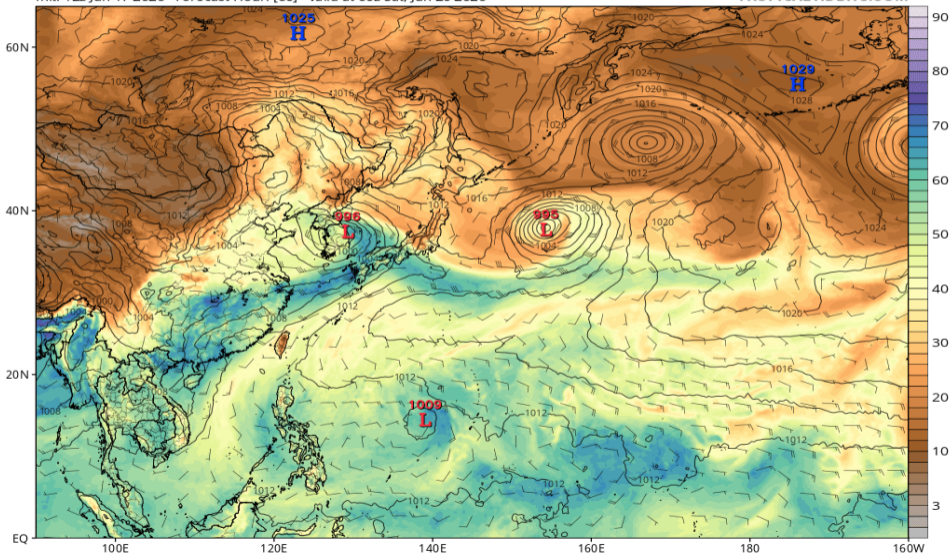


可降水量 (GFS 06/20 00Z 予報)

GFS MSLP (mb), Total Precipitable Water (mm), and 850mb Wind (kt)

Init: 12z Jun 17 2026 Forecast Hour: [60] valid at 00z Sat, Jun 20 2026

TROPICALTIDBITS.COM

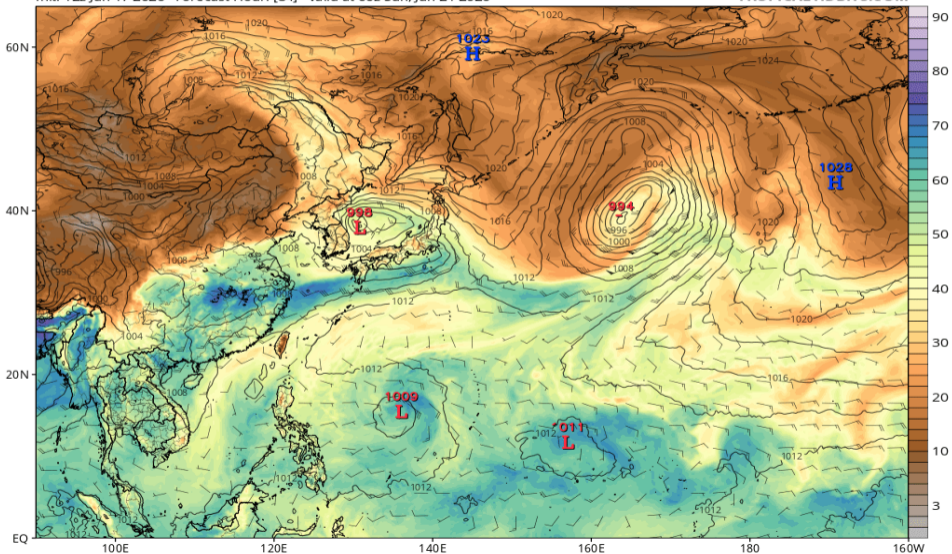


可降水量 (GFS 06/21 00Z 予報)

GFS MSLP (mb), Total Precipitable Water (mm), and 850mb Wind (kt)

Init: 12z Jun 17 2026 Forecast Hour: [84] valid at 00z Sun, Jun 21 2026

TROPICALTIDBITS.COM

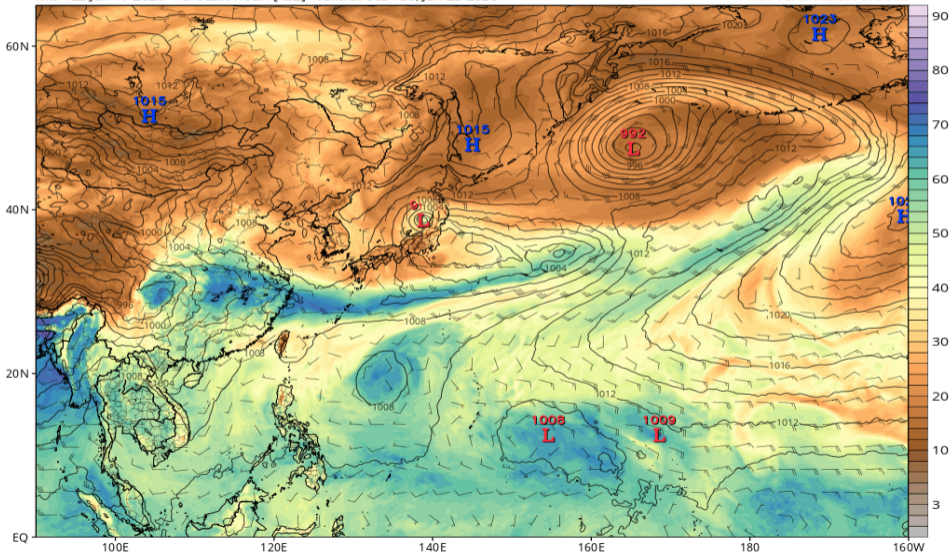


可降水量 (GFS 06/23 00Z 予報)

GFS MSLP (mb), Total Precipitable Water (mm), and 850mb Wind (kt)

Init: 12z Jun 17 2026 Forecast Hour: [132] valid at 00z Tue, Jun 23 2026

TROPICALTIDBITS.COM

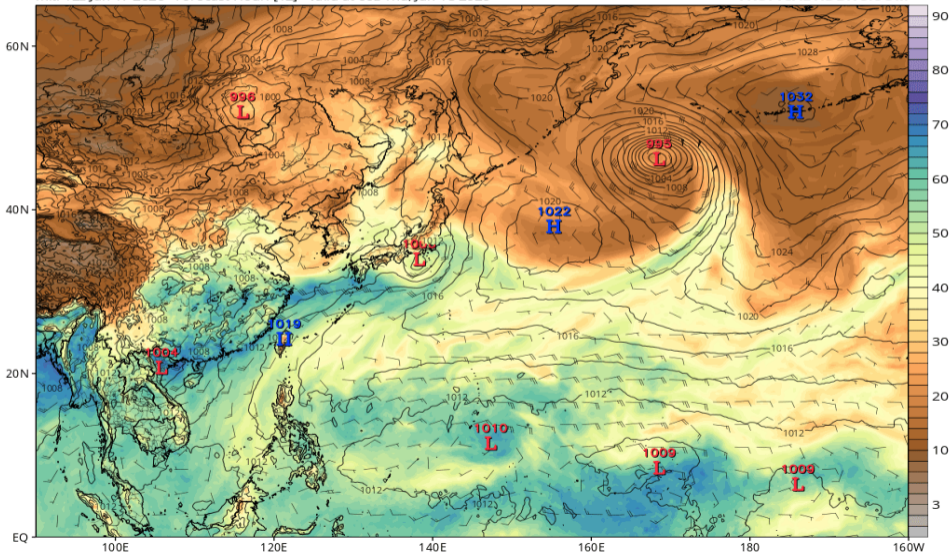


可降水量 (ECMWF 06/18 00Z 予報)

ECMWF MSLP (mb), Total Precipitable Water (mm), and 850mb Wind (kt)

Init: 12z Jun 17 2026 Forecast Hour: [12] valid at 00z Thu, Jun 18 2026

TROPICALTIDBITS.COM

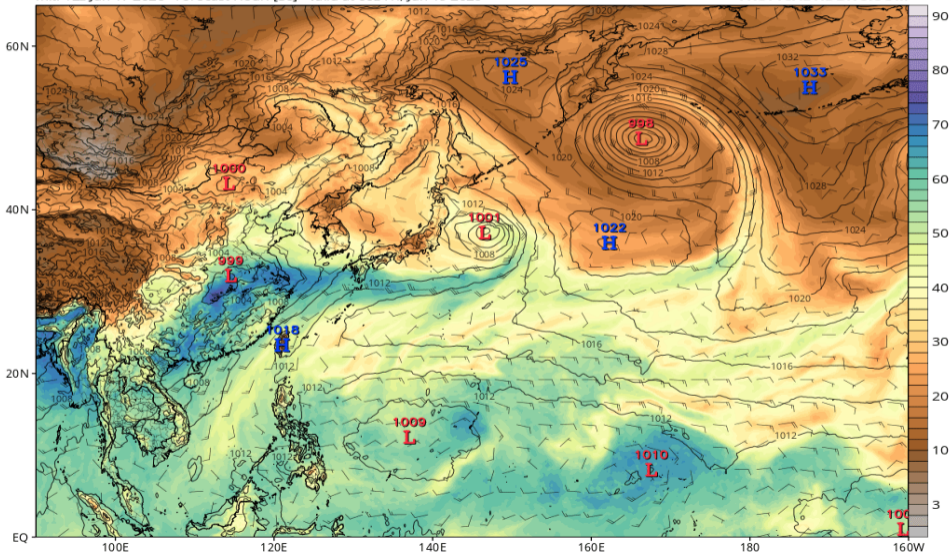


可降水量 (ECMWF 06/19 00Z 予報)

ECMWF MSLP (mb), Total Precipitable Water (mm), and 850mb Wind (kt)

Init: 12z Jun 17 2026 Forecast Hour: [36] valid at 00z Fri, Jun 19 2026

TROPICALTIDBITS.COM

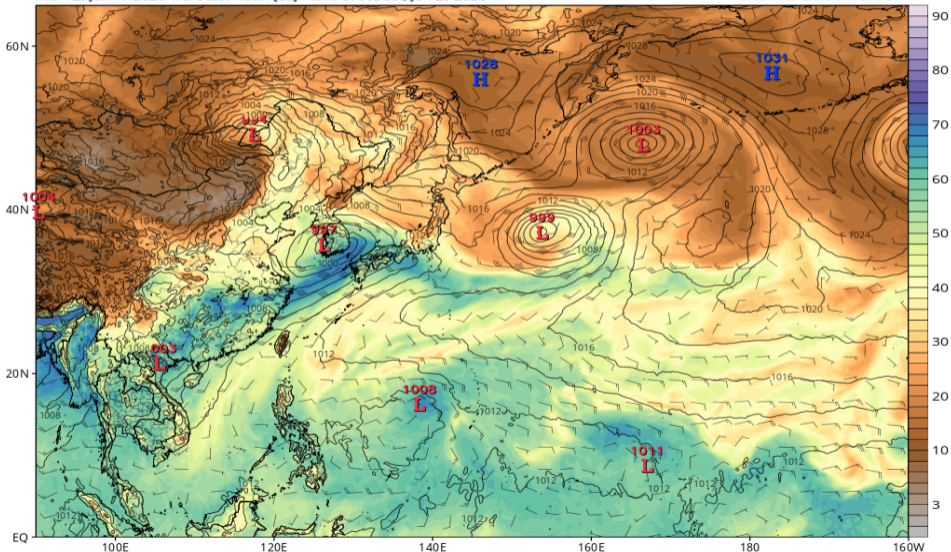


可降水量 (ECMWF 06/20 00Z 予報)

ECMWF MSLP (mb), Total Precipitable Water (mm), and 850mb Wind (kt)

Init: 12z Jun 17 2026 Forecast Hour: [60] valid at 00z Sat, Jun 20 2026

TROPICALTIDBITS.COM

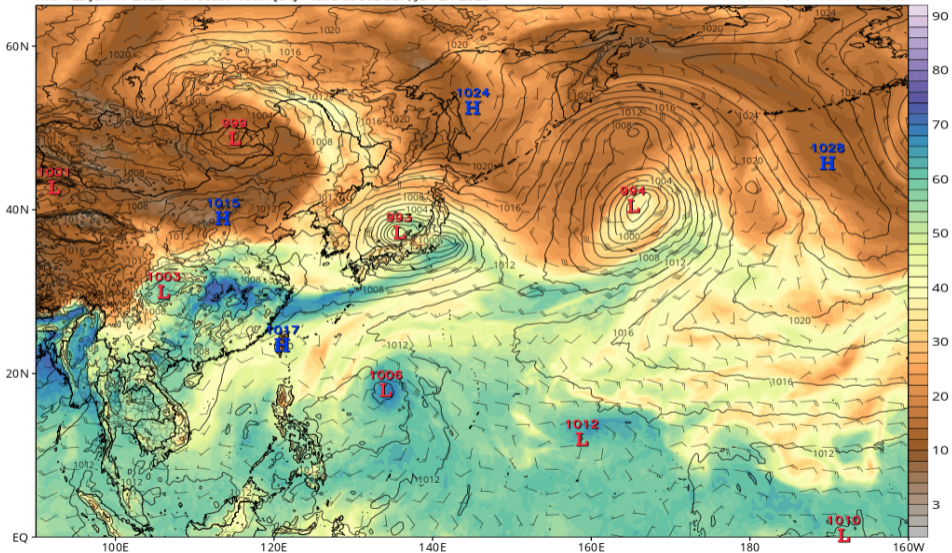


可降水量 (ECMWF 06/21 00Z 予報)

ECMWF MSLP (mb), Total Precipitable Water (mm), and 850mb Wind (kt)

Init: 12z Jun 17 2026 Forecast Hour: [84] valid at 00z Sun, Jun 21 2026

TROPICALTIDBITS.COM

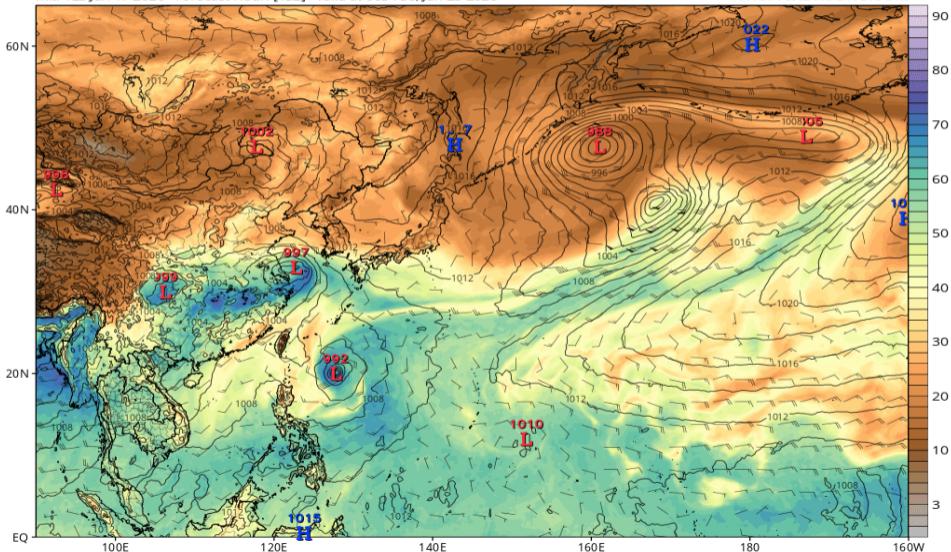


可降水量 (ECMWF 06/23 00Z 予報)

ECMWF MSLP (mb), Total Precipitable Water (mm), and 850mb Wind (kt)

Init: 12z Jun 17 2026 Forecast Hour: [132] valid at 00z Tue, Jun 23 2026

TROPICALTIDBITS.COM

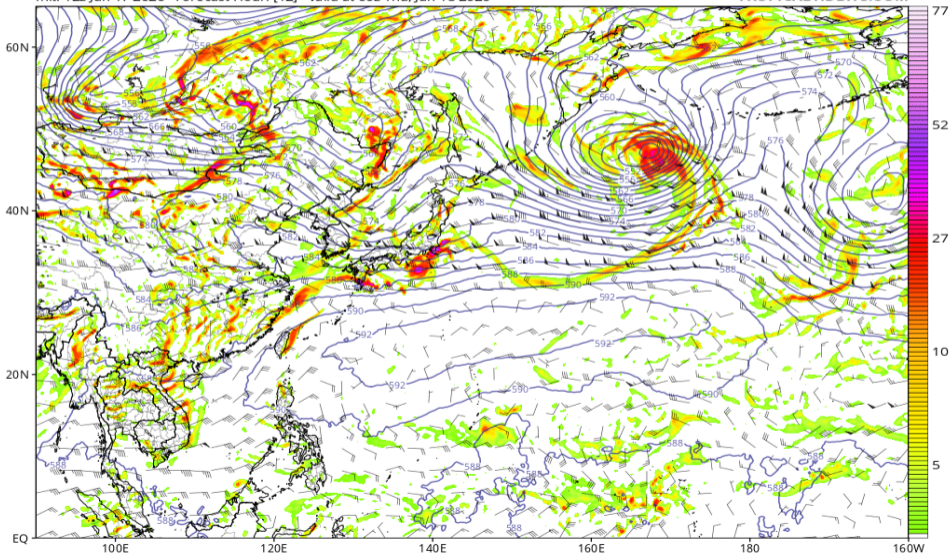


渦度 850, Z500, UV200 (GFS 06/18 00Z 予報)

GFS 850 hPa Cyclonic Vorticity (10^5 s^{-1}), 500 hPa Height (dam), and 200 hPa Wind (kt)

Init: 12z Jun 17 2026 Forecast Hour: [12] valid at 00z Thu, Jun 18 2026

TROPICALTIDBITS.COM

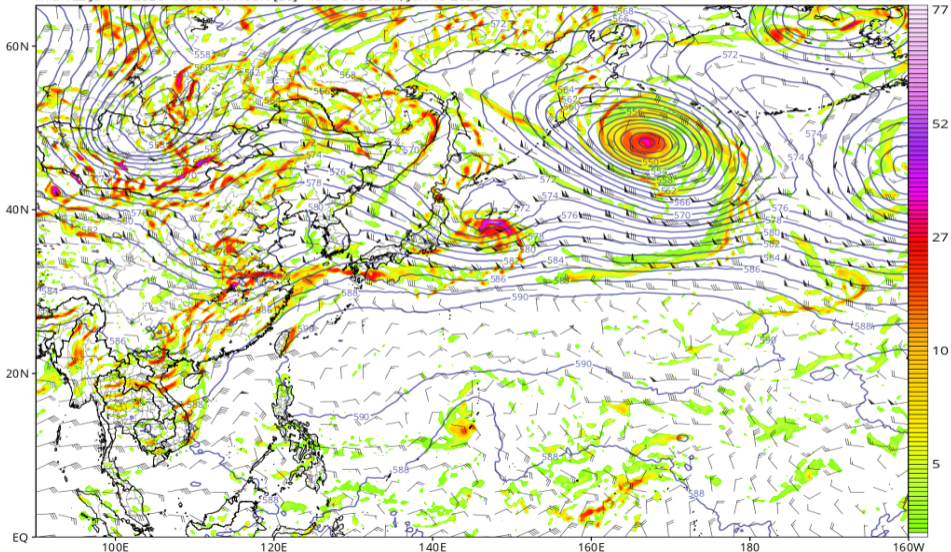


渦度 850, Z500, UV200 (GFS 06/19 00Z 予報)

GFS 850 hPa Cyclonic Vorticity (10^5 s^{-1}), 500 hPa Height (dam), and 200 hPa Wind (kt)

Init: 12z Jun 17 2026 Forecast Hour: [36] valid at 00z Fri, Jun 19 2026

TROPICALTIDBITS.COM

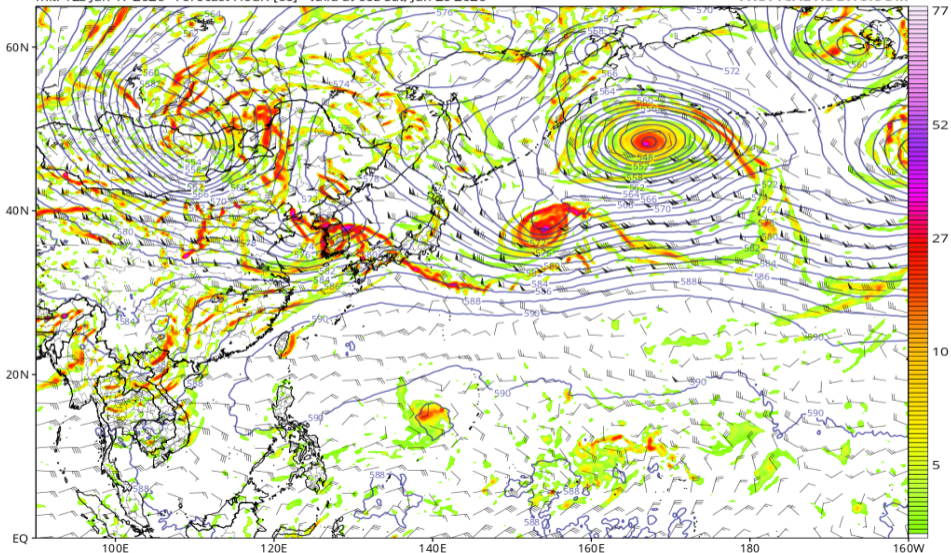


渦度 850, Z500, UV200 (GFS 06/20 00Z 予報)

GFS 850 hPa Cyclonic Vorticity (10^5 s^{-1}), 500 hPa Height (dam), and 200 hPa Wind (kt)

Init: 12z Jun 17 2026 Forecast Hour: [60] valid at 00z Sat, Jun 20 2026

TROPICALTIDBITS.COM

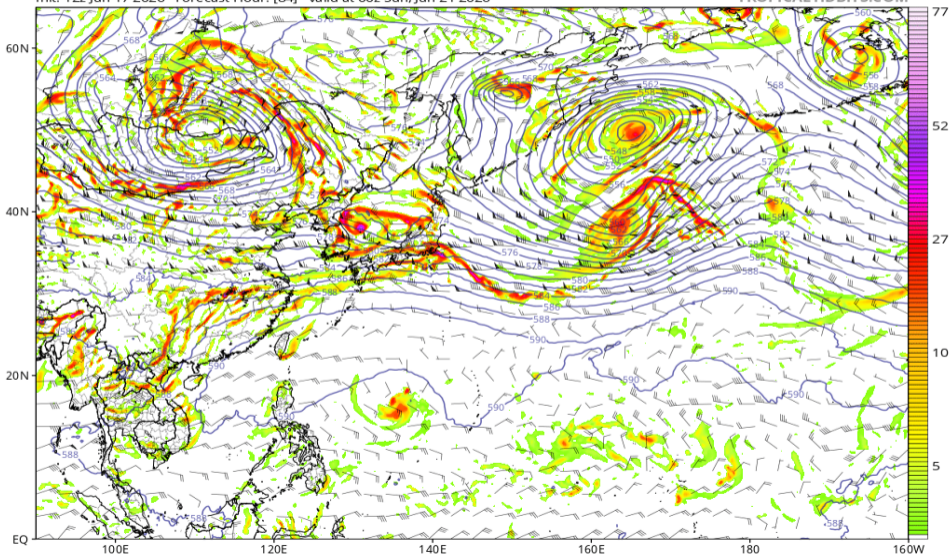


渦度 850, Z500, UV200 (GFS 06/21 00Z 予報)

GFS 850 hPa Cyclonic Vorticity (10^5 s^{-1}), 500 hPa Height (dam), and 200 hPa Wind (kt)

Init: 12z Jun 17 2026 Forecast Hour: [84] valid at 00z Sun, Jun 21 2026

TROPICALTIDBITS.COM

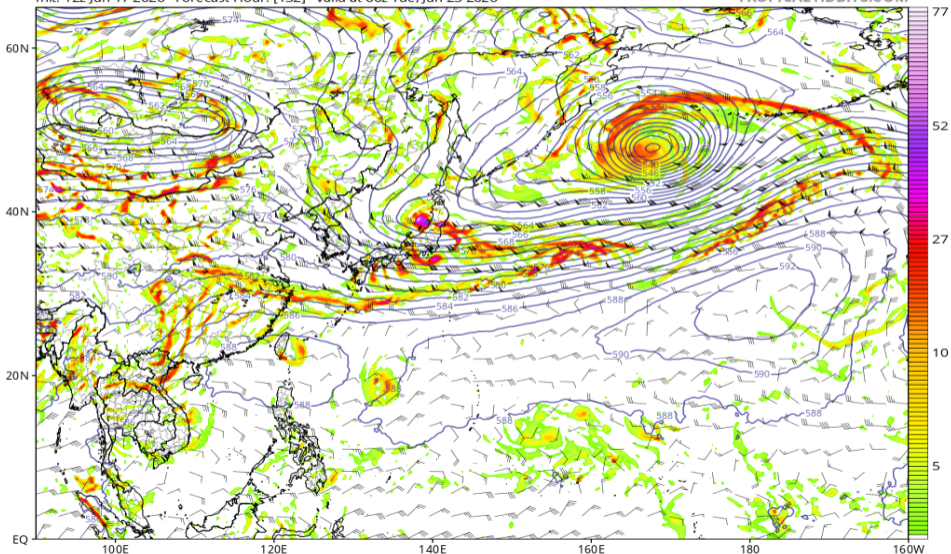


渦度 850, Z500, UV200 (GFS 06/23 00Z 予報)

GFS 850 hPa Cyclonic Vorticity (10^5 s^{-1}), 500 hPa Height (dam), and 200 hPa Wind (kt)

Init: 12z Jun 17 2026 Forecast Hour: [132] valid at 00z Tue, Jun 23 2026

TROPICALTIDBITS.COM

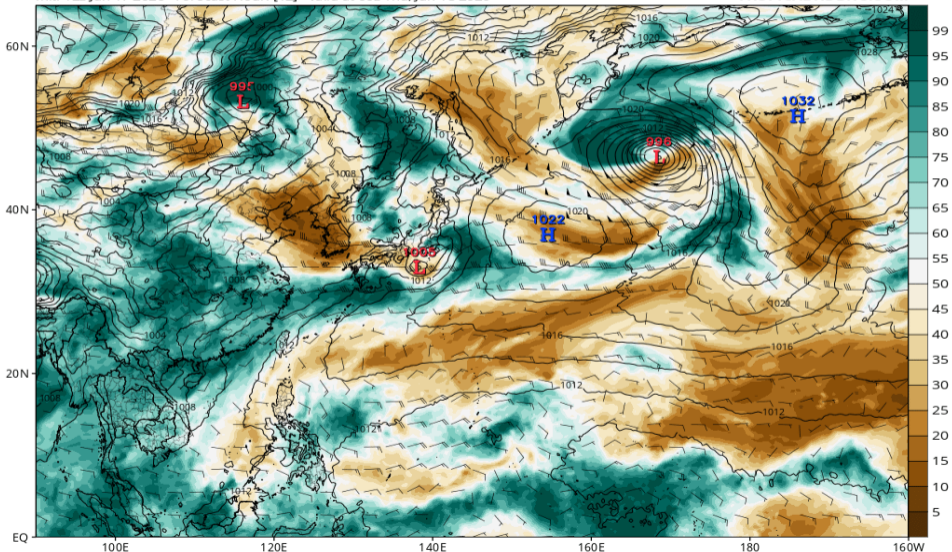


RH700-300 (GFS 06/18 00Z 予報)

GFS MSLP (mb), 700-300 hPa Relative Humidity (%), and 700-300 hPa Wind (kt)

Init: 12z Jun 17 2026 Forecast Hour: [12] valid at 00z Thu, Jun 18 2026

TROPICALTIDBITS.COM

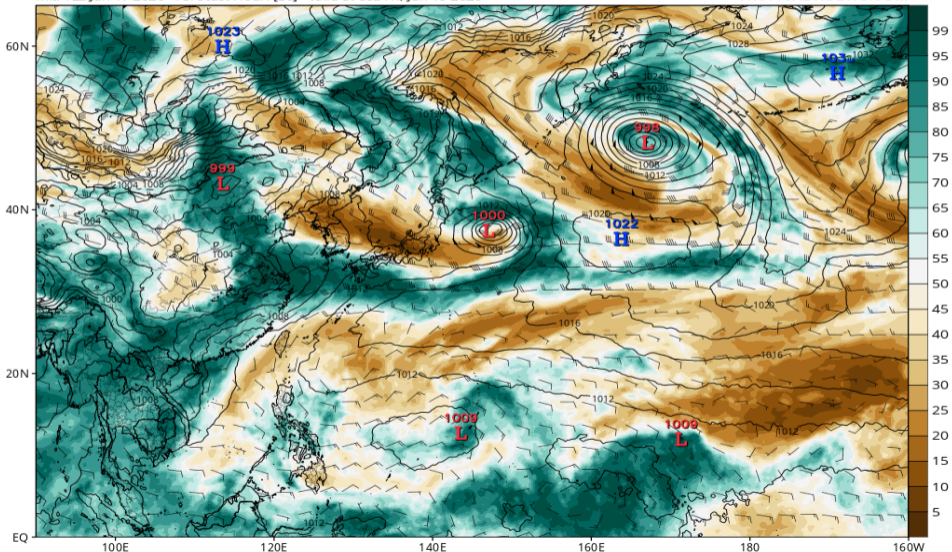


RH700-300 (GFS 06/19 00Z 予報)

GFS MSLP (mb), 700-300 hPa Relative Humidity (%), and 700-300 hPa Wind (kt)

Init: 12z Jun 17 2026 Forecast Hour: [36] valid at 00z Fri, Jun 19 2026

TROPICALTIDBITS.COM

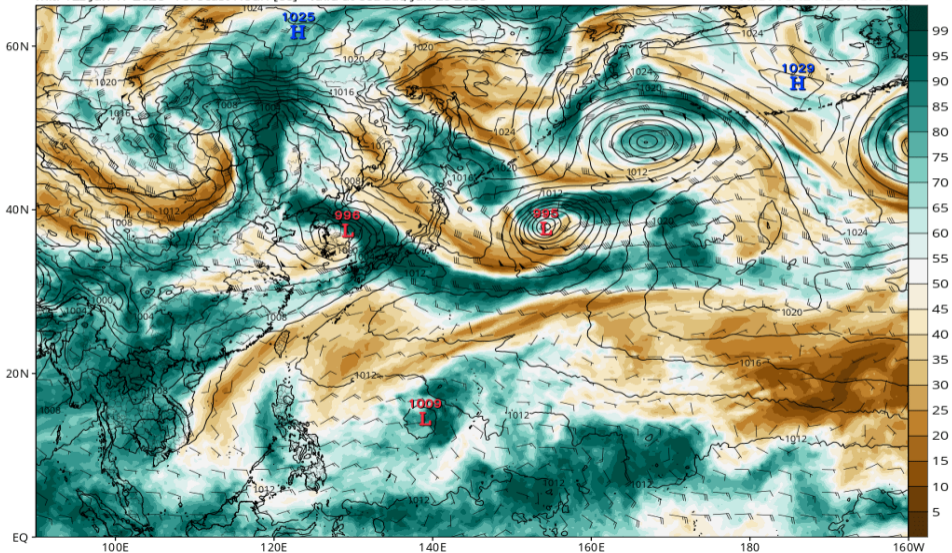


RH700-300 (GFS 06/20 00Z 予報)

GFS MSLP (mb), 700-300 hPa Relative Humidity (%), and 700-300 hPa Wind (kt)

Init: 12z Jun 17 2026 Forecast Hour: [60] valid at 00z Sat, Jun 20 2026

TROPICALTIDBITS.COM

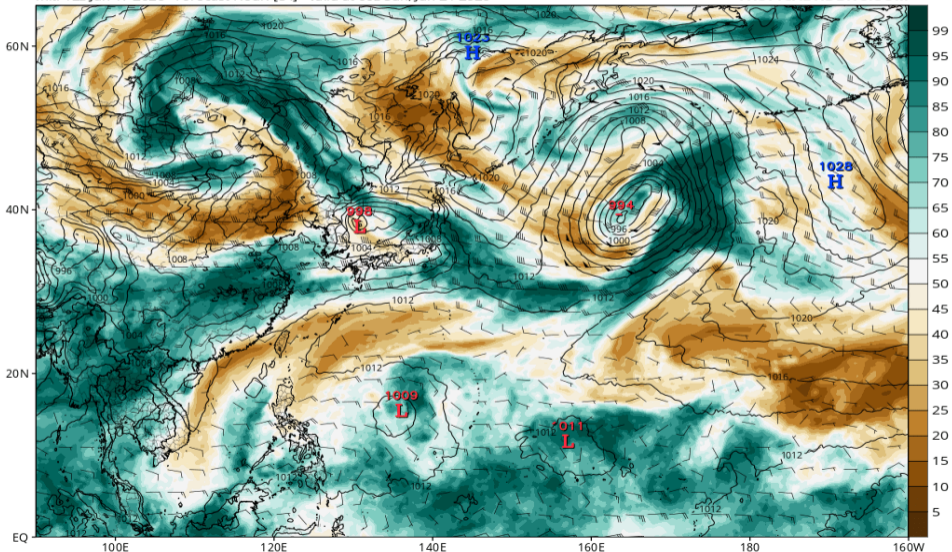


RH700-300 (GFS 06/21 00Z 予報)

GFS MSLP (mb), 700-300 hPa Relative Humidity (%), and 700-300 hPa Wind (kt)

Init: 12z Jun 17 2026 Forecast Hour: [84] valid at 00z Sun, Jun 21 2026

TROPICALTIDBITS.COM

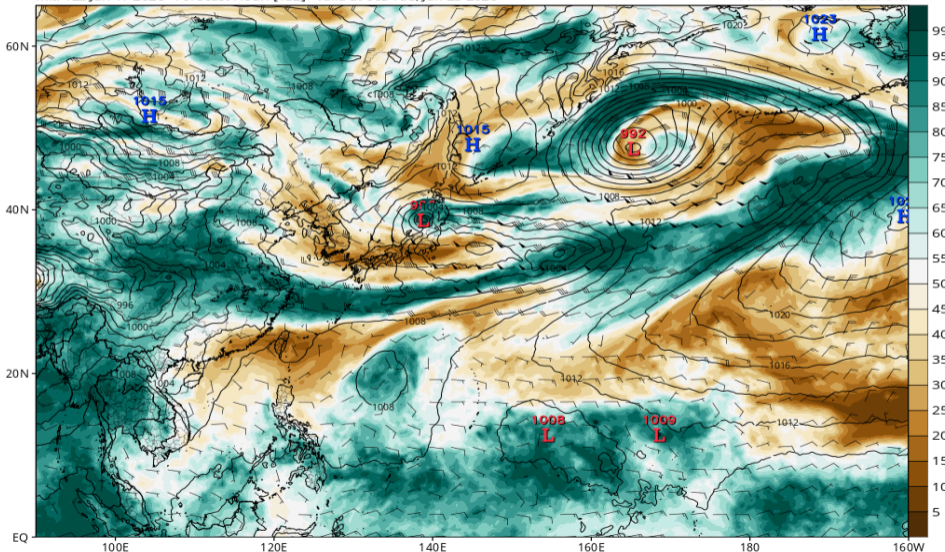


RH700-300 (GFS 06/23 00Z 予報)

GFS MSLP (mb), 700-300 hPa Relative Humidity (%), and 700-300 hPa Wind (kt)

Init: 12z Jun 17 2026 Forecast Hour: [132] valid at 00z Tue, Jun 23 2026

TROPICALTIDBITS.COM

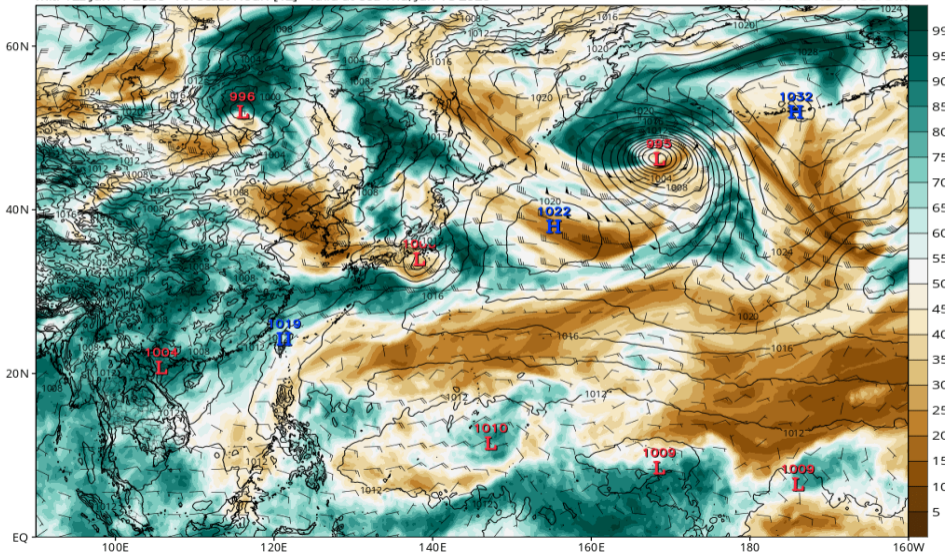


RH700-300 (ECMWF 06/18 00Z 予報)

ECMWF MSLP (mb), 700-300 hPa Relative Humidity (%), and 700-300 hPa Wind (kt)

Init: 12z Jun 17 2026 Forecast Hour: [12] valid at 00z Thu, Jun 18 2026

TROPICALTIDBITS.COM

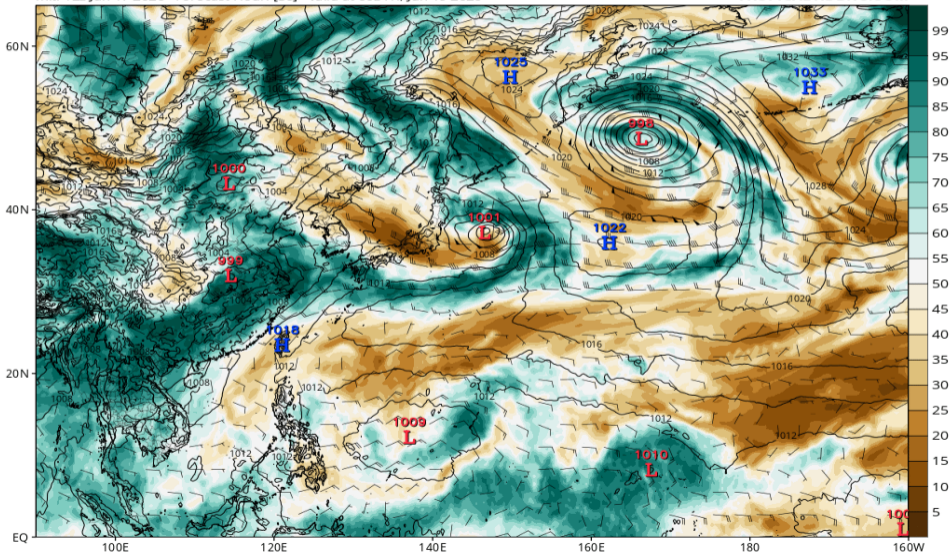


RH700-300 (ECMWF 06/19 00Z 予報)

ECMWF MSLP (mb), 700-300 hPa Relative Humidity (%), and 700-300 hPa Wind (kt)

Init: 12z Jun 17 2026 Forecast Hour: [36] valid at 00z Fri, Jun 19 2026

TROPICALTIDBITS.COM

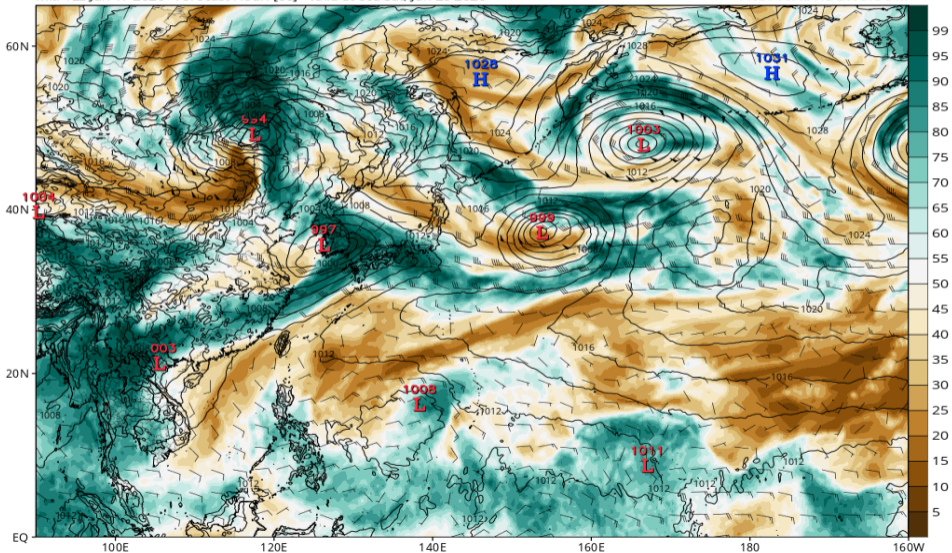


RH700-300 (ECMWF 06/20 00Z 予報)

ECMWF MSLP (mb), 700-300 hPa Relative Humidity (%), and 700-300 hPa Wind (kt)

Init: 12z Jun 17 2026 Forecast Hour: [60] valid at 00z Sat, Jun 20 2026

TROPICALTIDBITS.COM

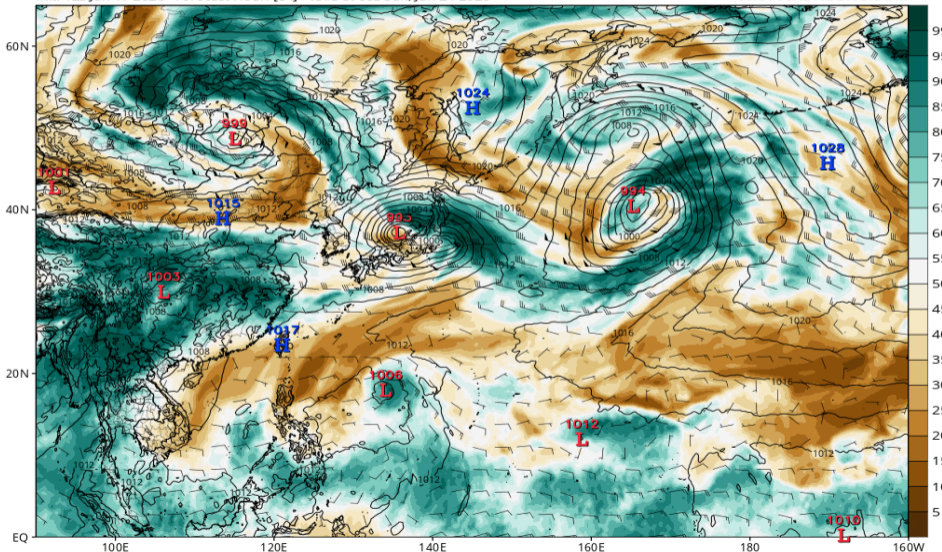


RH700-300 (ECMWF 06/21 00Z 予報)

ECMWF MSLP (mb), 700-300 hPa Relative Humidity (%), and 700-300 hPa Wind (kt)

Init: 12z Jun 17 2026 Forecast Hour: [84] valid at 00z Sun, Jun 21 2026

TROPICALTIDBITS.COM

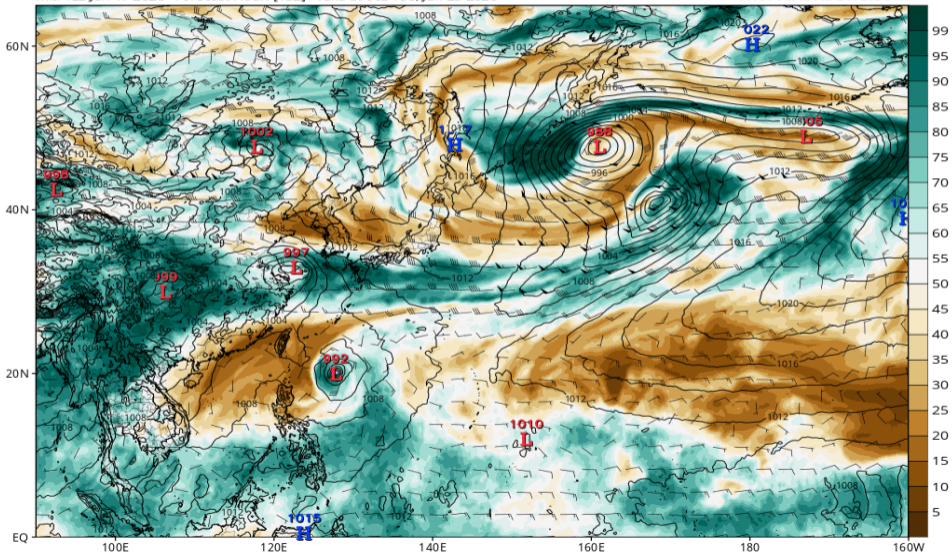


RH700-300 (ECMWF 06/23 00Z 予報)

ECMWF MSLP (mb), 700-300 hPa Relative Humidity (%), and 700-300 hPa Wind (kt)

Init: 12z Jun 17 2026 Forecast Hour: [132] valid at 00z Tue, Jun 23 2026

TROPICALTIDBITS.COM

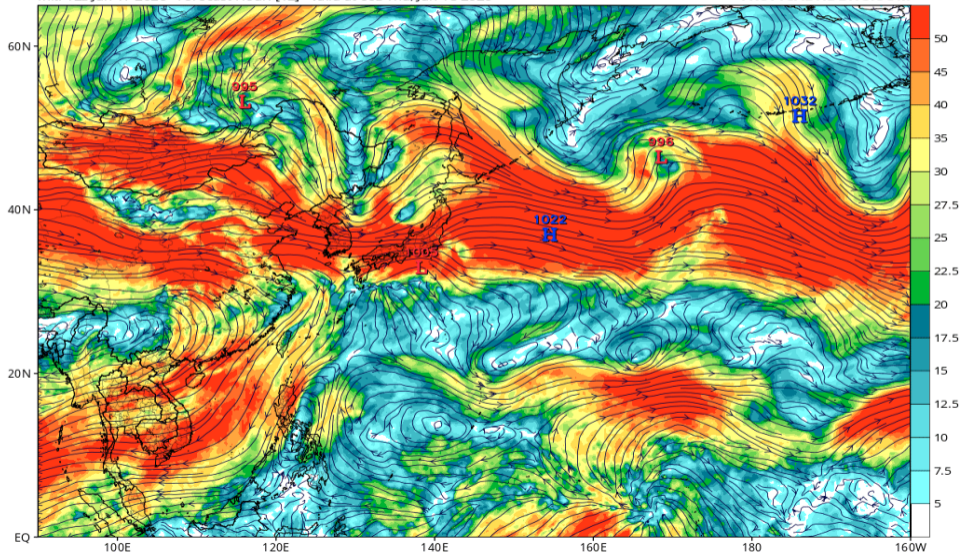


Wshear850-200 (GFS 06/18 00Z 予報)

GFS 200mb-850mb Wind Shear (knots) & Low Centers (mb)

Init: 12z Jun 17 2026 Forecast Hour: [12] valid at 00z Thu, Jun 18 2026

TROPICALTIDBITS.COM

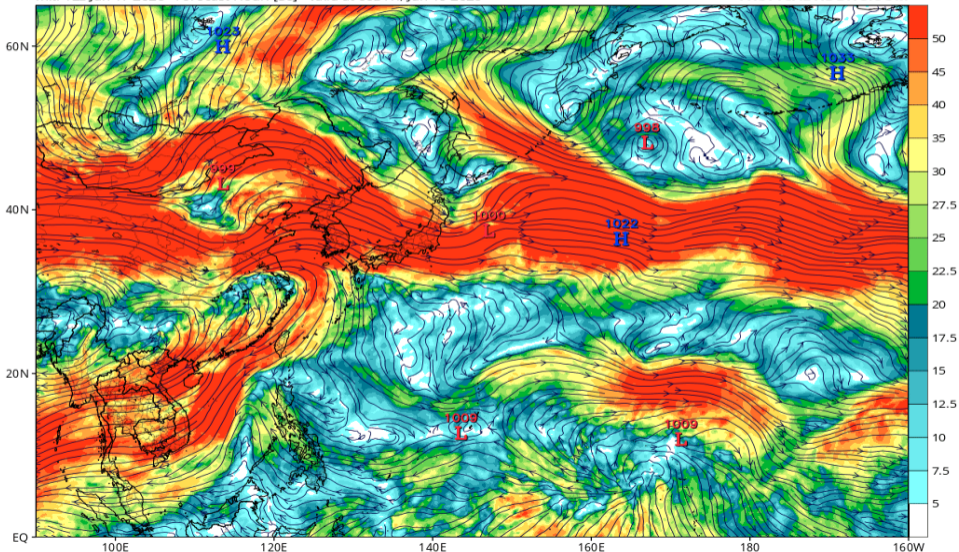


Wshear850-200 (GFS 06/19 00Z 予報)

GFS 200mb-850mb Wind Shear (knots) & Low Centers (mb)

Init: 12z Jun 17 2026 Forecast Hour: [36] valid at 00z Fri, Jun 19 2026

TROPICALTIDBITS.COM

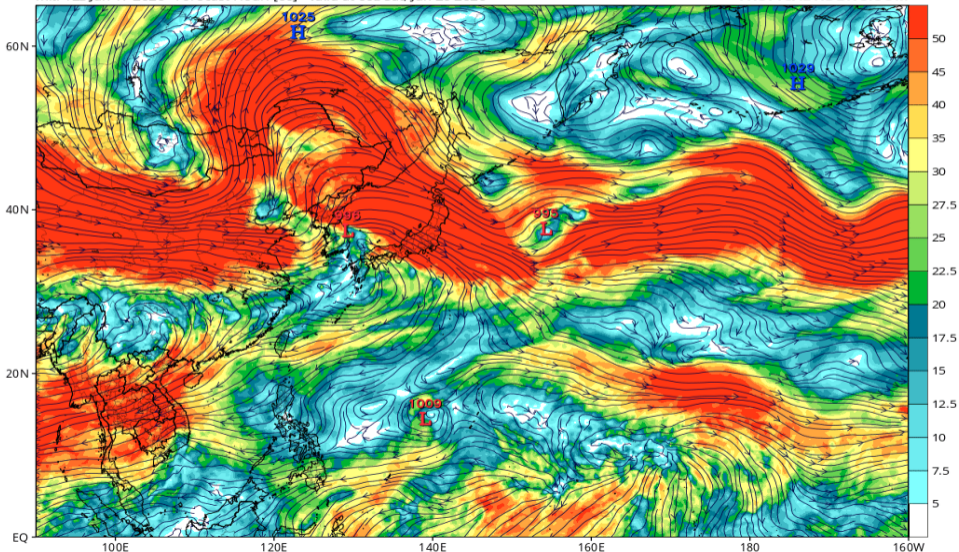


Wshear850-200 (GFS 06/20 00Z 予報)

GFS 200mb-850mb Wind Shear (knots) & Low Centers (mb)

Init: 12z Jun 17 2026 Forecast Hour: [60] valid at 00z Sat, Jun 20 2026

TROPICALTIDBITS.COM

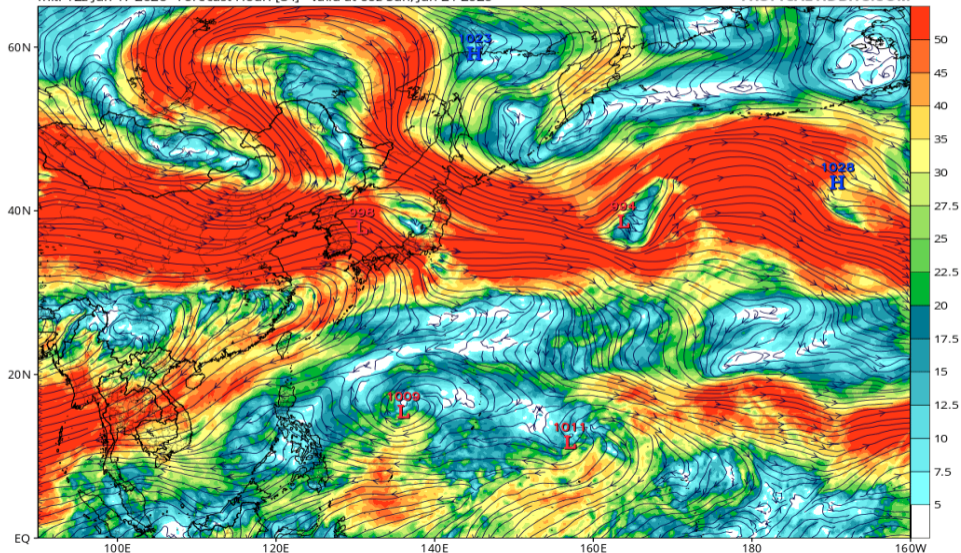


Wshear850-200 (GFS 06/21 00Z 予報)

GFS 200mb-850mb Wind Shear (knots) & Low Centers (mb)

Init: 12z Jun 17 2026 Forecast Hour: [84] valid at 00z Sun, Jun 21 2026

TROPICALTIDBITS.COM

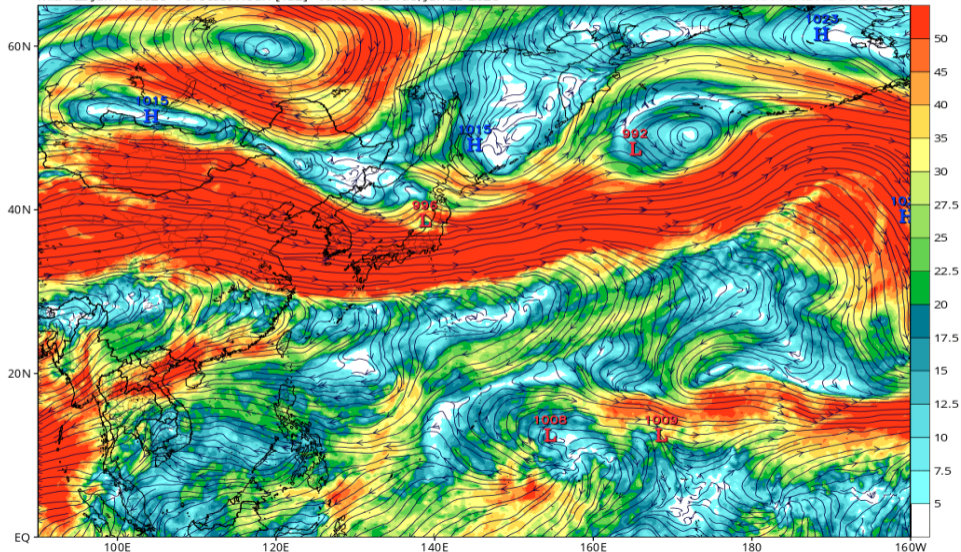


Wshear850-200 (GFS 06/23 00Z 予報)

GFS 200mb-850mb Wind Shear (knots) & Low Centers (mb)

Init: 12z Jun 17 2026 Forecast Hour: [132] valid at 00z Tue, Jun 23 2026

TROPICALTIDBITS.COM

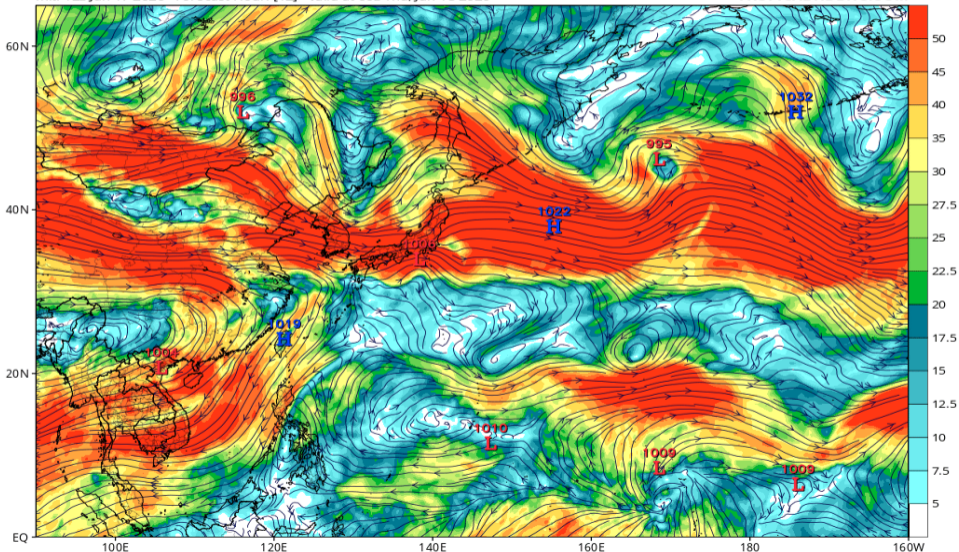


Wshear850-200 (ECMWF 06/18 00Z 予報)

ECMWF 200mb-850mb Wind Shear (knots) & Low Centers (mb)

Init: 12z Jun 17 2026 Forecast Hour: [12] valid at 00z Thu, Jun 18 2026

TROPICALTIDBITS.COM

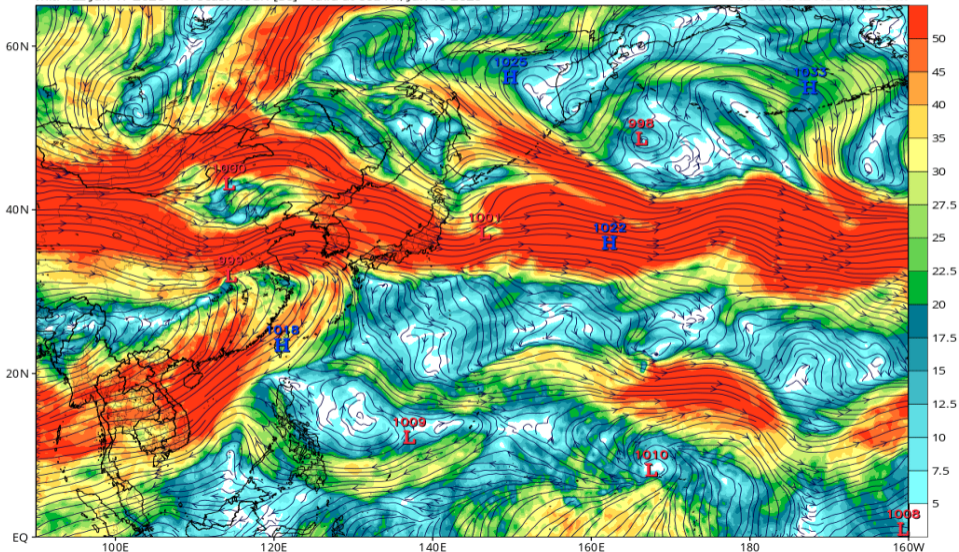


Wshear850-200 (ECMWF 06/19 00Z 予報)

ECMWF 200mb-850mb Wind Shear (knots) & Low Centers (mb)

Init: 12z Jun 17 2026 Forecast Hour: [36] valid at 00z Fri, Jun 19 2026

TROPICALTIDBITS.COM

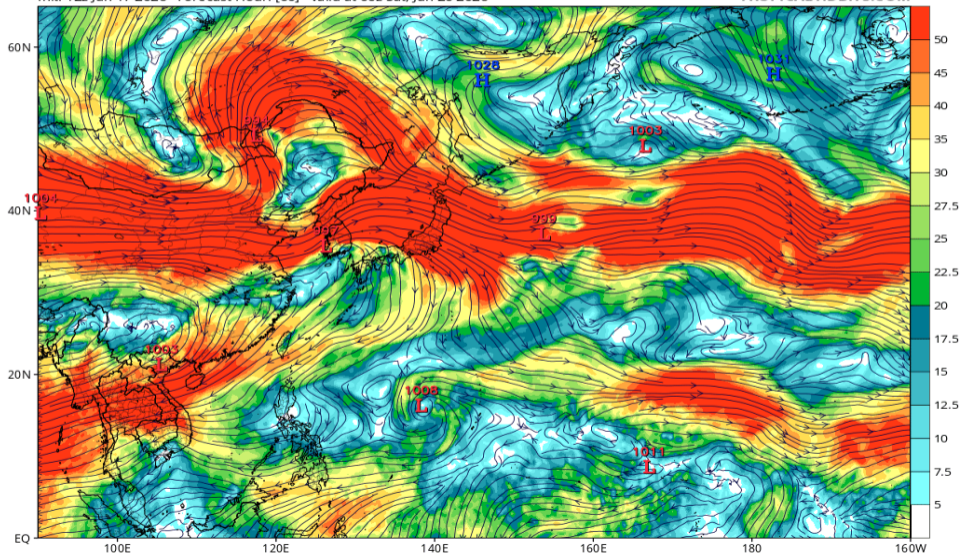


Wshear850-200 (ECMWF 06/20 00Z 予報)

ECMWF 200mb-850mb Wind Shear (knots) & Low Centers (mb)

Init: 12z Jun 17 2026 Forecast Hour: [60] valid at 00z Sat, Jun 20 2026

TROPICALTIDBITS.COM

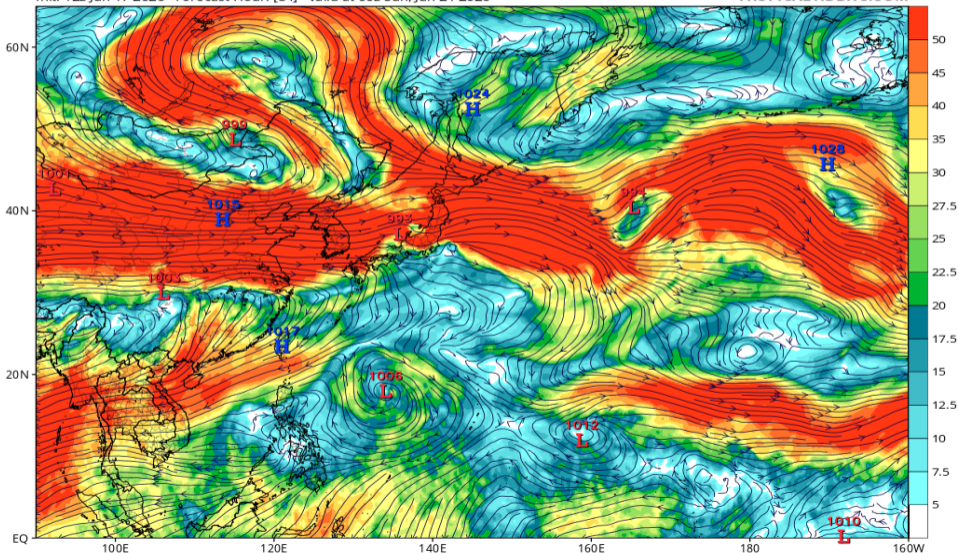


Wshear850-200 (ECMWF 06/21 00Z 予報)

ECMWF 200mb-850mb Wind Shear (knots) & Low Centers (mb)

Init: 12z Jun 17 2026 Forecast Hour: [84] valid at 00z Sun, Jun 21 2026

TROPICALTIDBITS.COM

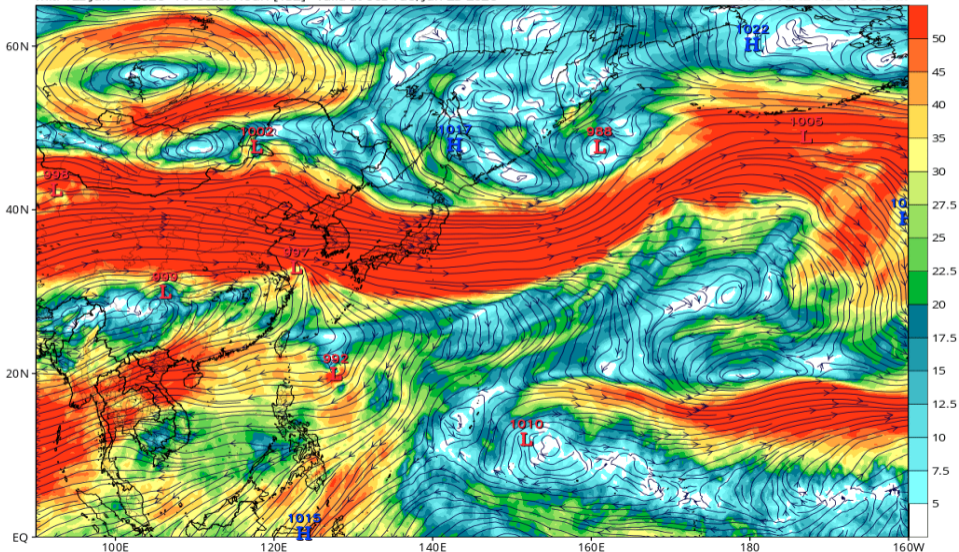


Wshear850-200 (ECMWF 06/23 00Z 予報)

ECMWF 200mb-850mb Wind Shear (knots) & Low Centers (mb)

Init: 12z Jun 17 2026 Forecast Hour: [132] valid at 00z Tue, Jun 23 2026

TROPICALTIDBITS.COM

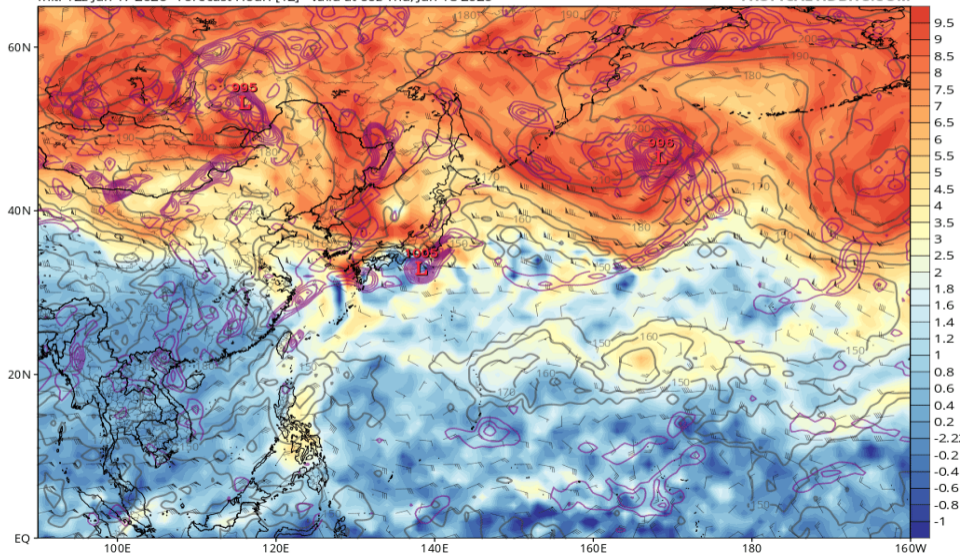


渦位 355K (GFS 06/18 00Z 予報)

GFS 355K Cyclonic PV (PVU), Wind (kt), Pressure (hPa, gray), & 850 hPa Cyclonic Vorticity (purple) [1.0°x1.0° grid]

Init: 12z Jun 17 2026 Forecast Hour: [12] valid at 00z Thu, Jun 18 2026

TROPICALTIDBITS.COM

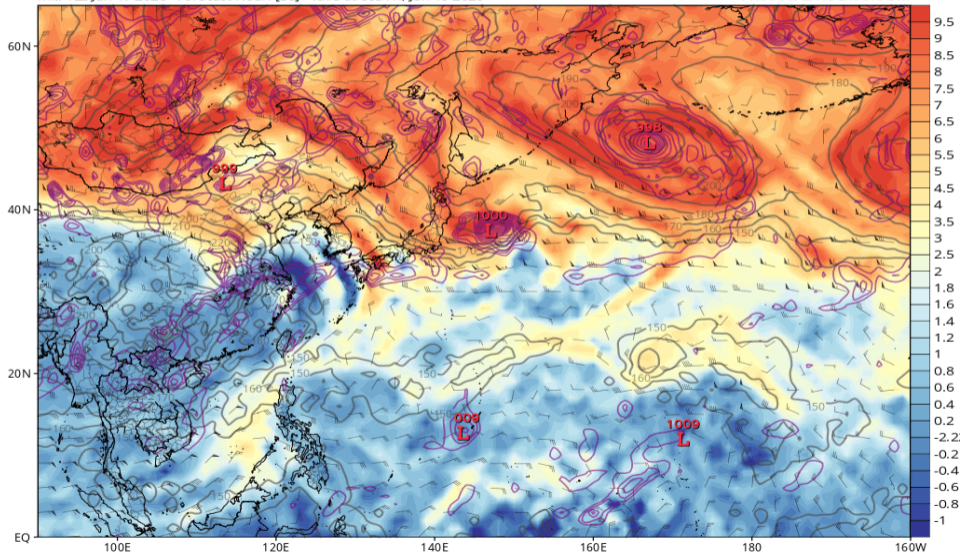


渦位 355K (GFS 06/19 00Z 予報)

GFS 355K Cyclonic PV (PVU), Wind (kt), Pressure (hPa, gray), & 850 hPa Cyclonic Vorticity (purple) [1.0°x1.0° grid]

Init: 12z Jun 17 2026 Forecast Hour: [36] valid at 00z Fri, Jun 19 2026

TROPICALTIDBITS.COM

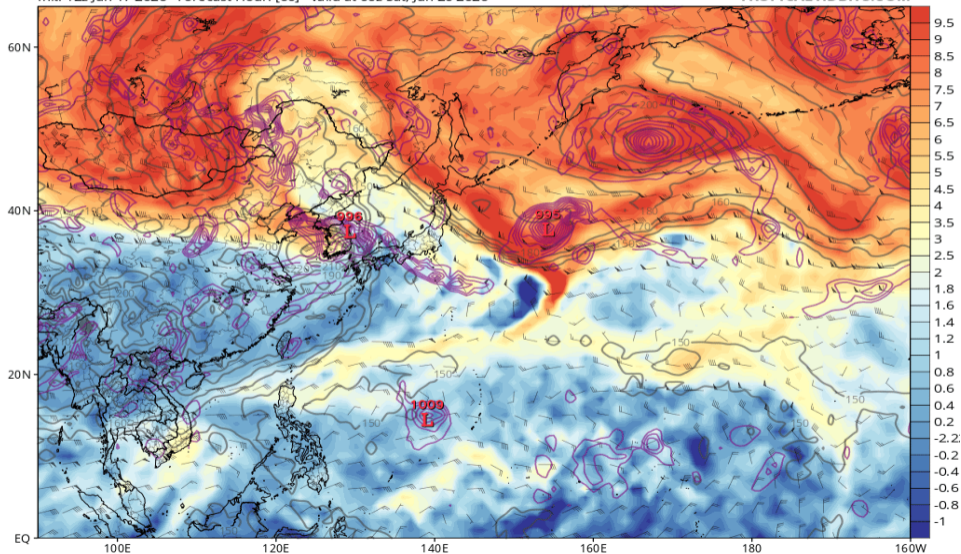


渦位 355K (GFS 06/20 00Z 予報)

GFS 355K Cyclonic PV (PVU), Wind (kt), Pressure (hPa, gray), & 850 hPa Cyclonic Vorticity (purple) [1.0°x1.0° grid]

Init: 12z Jun 17 2026 Forecast Hour: [60] valid at 00z Sat, Jun 20 2026

TROPICALTIDBITS.COM

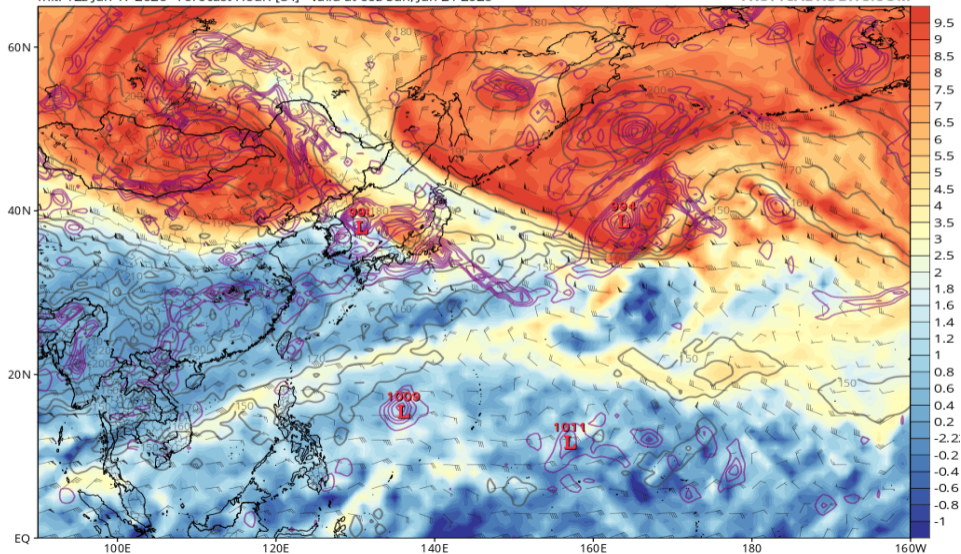


渦位 355K (GFS 06/21 00Z 予報)

GFS 355K Cyclonic PV (PVU), Wind (kt), Pressure (hPa, gray), & 850 hPa Cyclonic Vorticity (purple) [1.0°x1.0° grid]

Init: 12z Jun 17 2026 Forecast Hour: [84] valid at 00z Sun, Jun 21 2026

TROPICALTIDBITS.COM

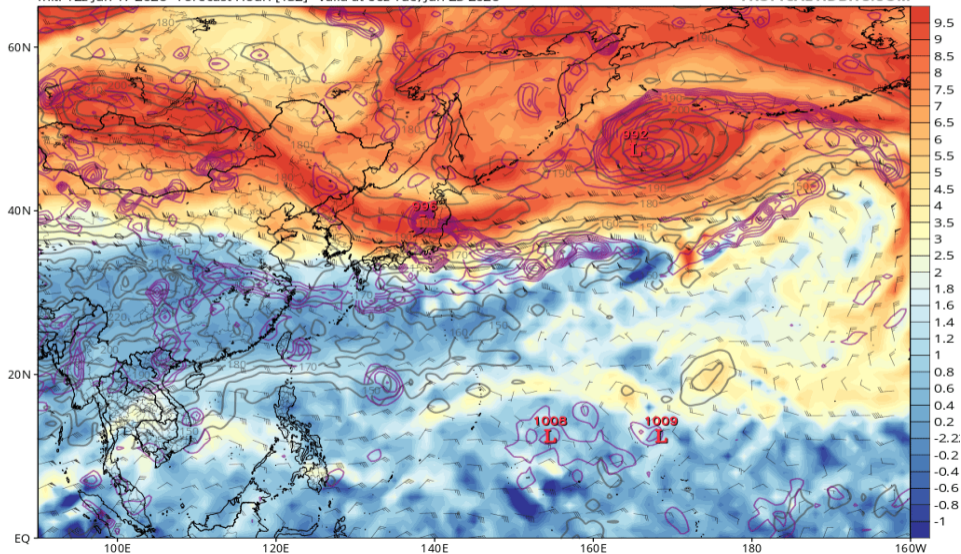


渦位 355K (GFS 06/23 00Z 予報)

GFS 355K Cyclonic PV (PVU), Wind (kt), Pressure (hPa, gray), & 850 hPa Cyclonic Vorticity (purple) [1.0°x1.0° grid]

Init: 12z Jun 17 2026 Forecast Hour: [132] valid at 00z Tue, Jun 23 2026

TROPICALTIDBITS.COM



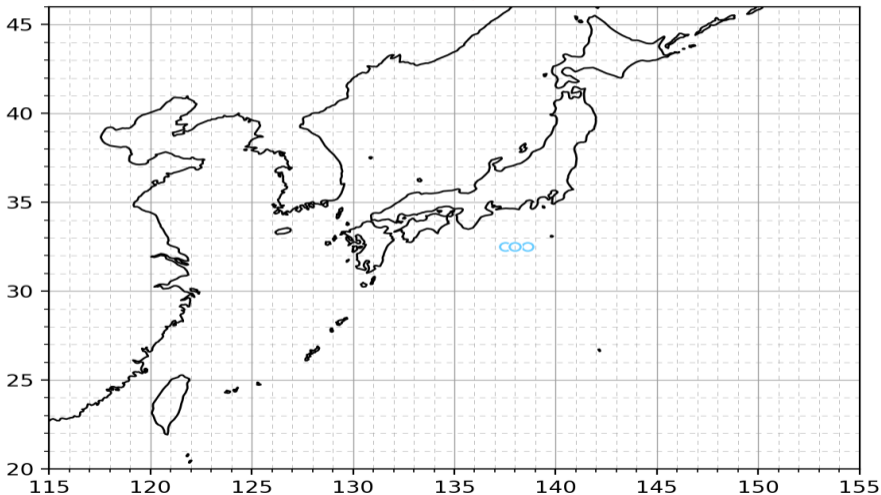
GrandEns (IFS/AIFS/GFS/AIGFS/GSM 06/18 00Z 予報)

Grand Ensemble

weather-models.info | ECMWF Open Data (CC BY 4.0),
NOAA data, 気象庁データ (ウェザーマップ社提供)

Init: 2026/06/17 18Z FT: 006h Valid: 2026/06/18 00Z

実際の進路予想は、気象庁の台風予報を利用してください



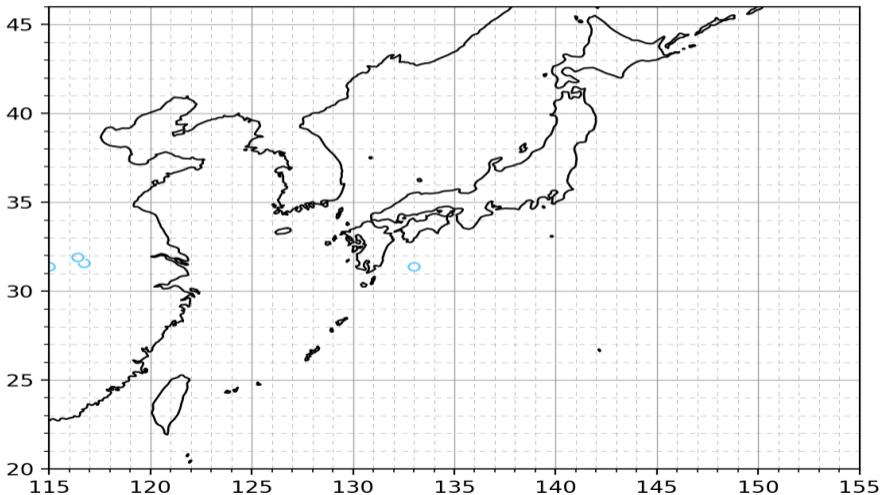
GrandEns (IFS/AIFS/GFS/AIGFS/GSM 06/19 00Z 予報)

Grand Ensemble

weather-models.info | ECMWF Open Data (CC BY 4.0),
NOAA data, 気象庁データ (ウェザーマップ社提供)

Init: 2026/06/17 18Z FT: 030h Valid: 2026/06/19 00Z

実際の進路予想は、気象庁の台風予報を利用してください



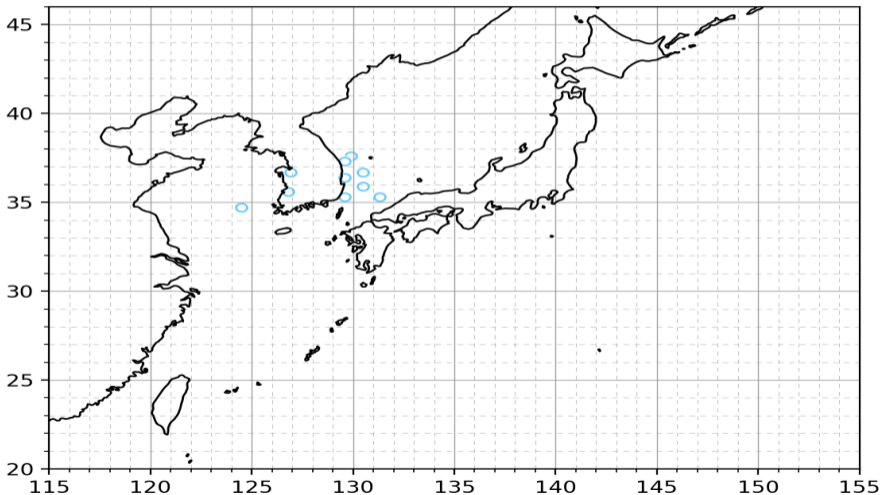
GrandEns (IFS/AIFS/GFS/AIGFS/GSM 06/20 00Z 予報)

Grand Ensemble

weather-models.info | ECMWF Open Data (CC BY 4.0),
NOAA data, 気象庁データ (ウェザーマップ社提供)

Init: 2026/06/17 18Z FT: 054h Valid: 2026/06/20 00Z

実際の進路予想は、気象庁の台風予報を利用してください



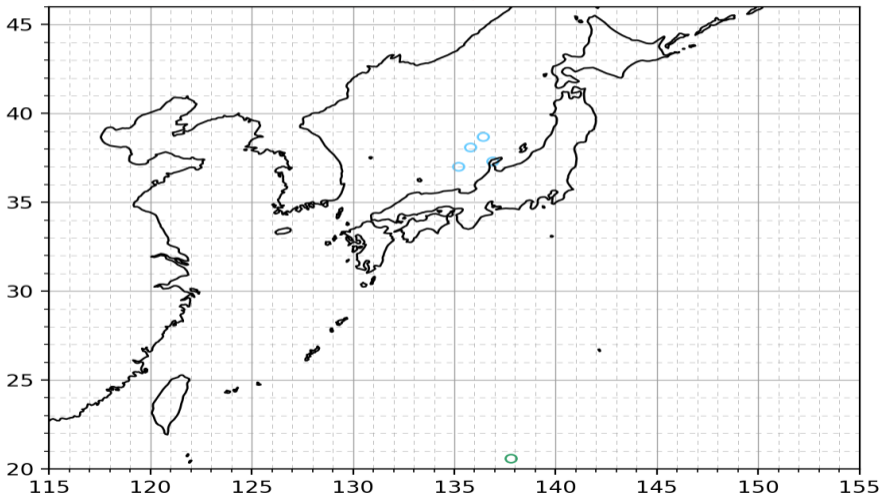
GrandEns (IFS/AIFS/GFS/AIGFS/GSM 06/21 00Z 予報)

Grand Ensemble

weather-models.info | ECMWF Open Data (CC BY 4.0),
NOAA data, 気象庁データ (ウェザーマップ社提供)

Init: 2026/06/17 18Z FT: 078h Valid: 2026/06/21 00Z

実際の進路予想は、気象庁の台風予報を利用してください



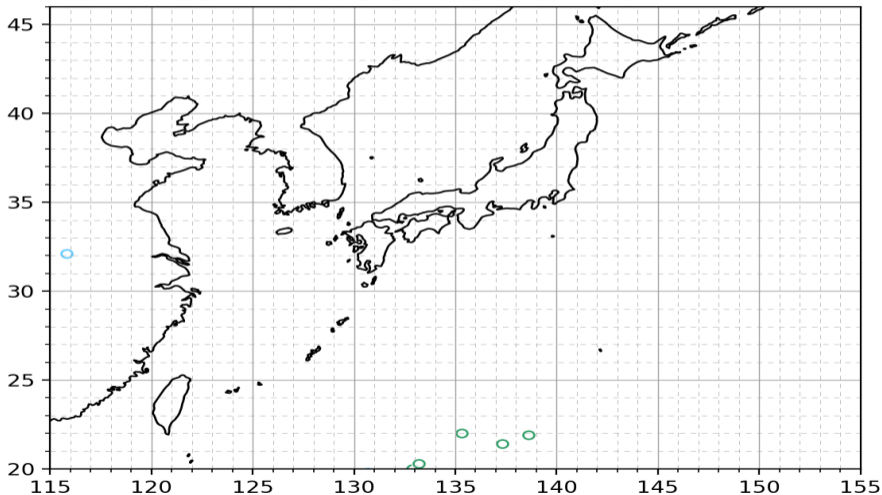
GrandEns (IFS/AIFS/GFS/AIGFS/GSM 06/22 00Z 予報)

Grand Ensemble

weather-models.info | ECMWF Open Data (CC BY 4.0),
NOAA data, 気象庁データ (ウェザーマップ社提供)

Init: 2026/06/17 18Z FT: 102h Valid: 2026/06/22 00Z

実際の進路予想は、気象庁の台風予報を利用してください



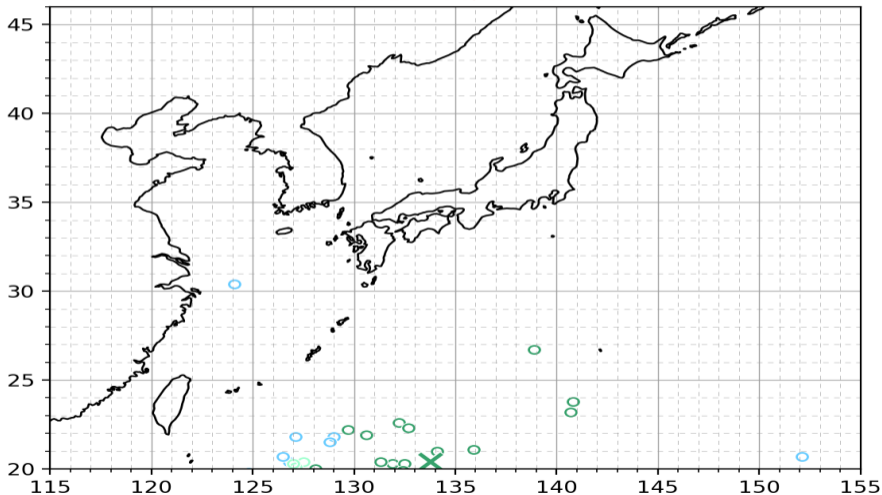
GrandEns (IFS/AIFS/GFS/AIGFS/GSM 06/23 00Z 予報)

Grand Ensemble

weather-models.info | ECMWF Open Data (CC BY 4.0),
NOAA data, 気象庁データ (ウェザーマップ社提供)

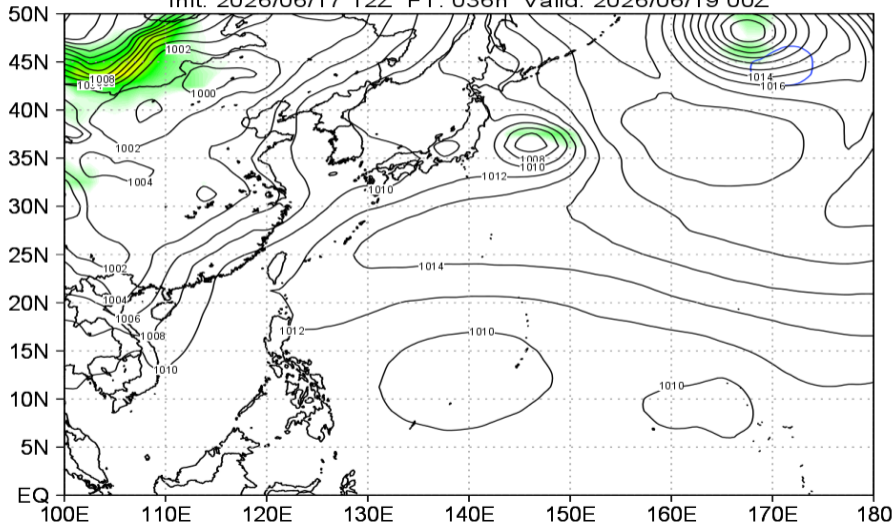
Init: 2026/06/17 18Z FT: 126h Valid: 2026/06/23 00Z

実際の進路予想は、気象庁の台風予報を利用してください



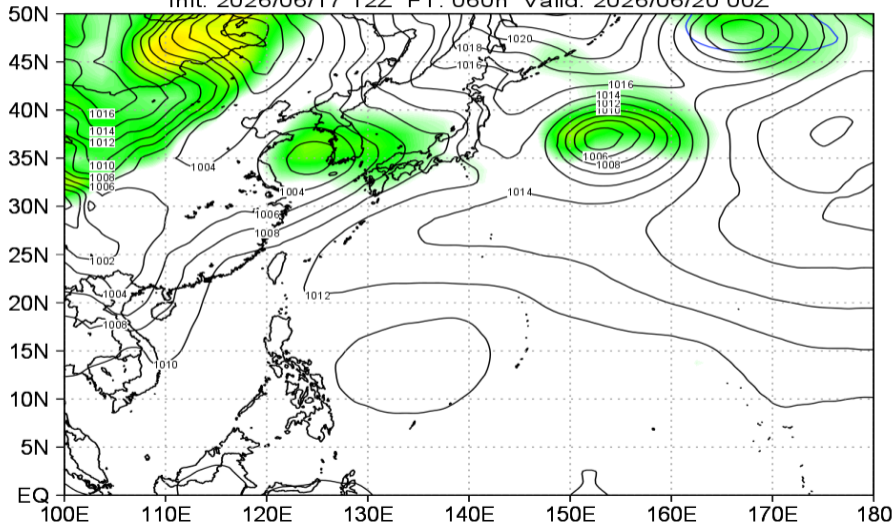
地上気圧 (GSMens 06/19 00Z 予報)

JMA GEPS MSLP (hPa) Mean&Spread
Init: 2026/06/17 12Z FT: 036h Valid: 2026/06/19 00Z



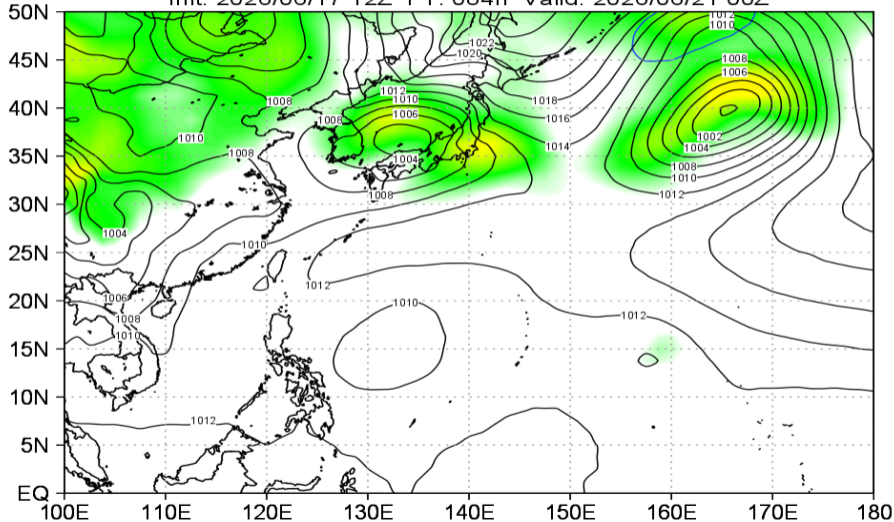
地上気圧 (GSMens 06/20 00Z 予報)

JMA GEPS MSLP (hPa) Mean&Spread
Init: 2026/06/17 12Z FT: 060h Valid: 2026/06/20 00Z



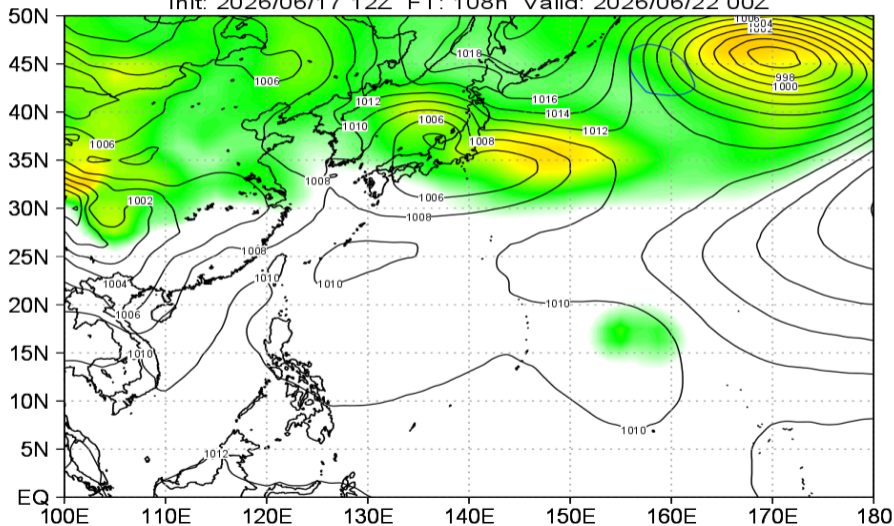
地上気圧 (GSMens 06/21 00Z 予報)

JMA GEPS MSLP (hPa) Mean&Spread
Init: 2026/06/17 12Z FT: 084h Valid: 2026/06/21 00Z



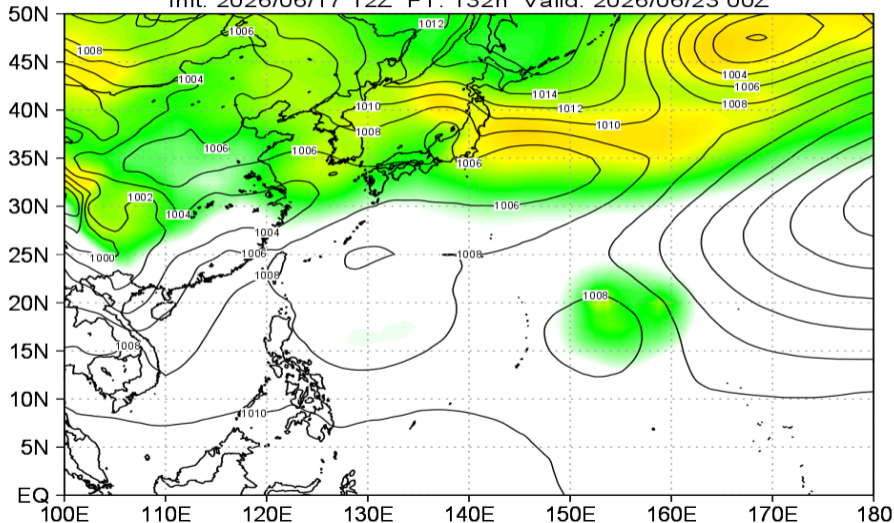
地上気圧 (GSMens 06/22 00Z 予報)

JMA GEPS MSLP (hPa) Mean&Spread
Init: 2026/06/17 12Z FT: 108h Valid: 2026/06/22 00Z



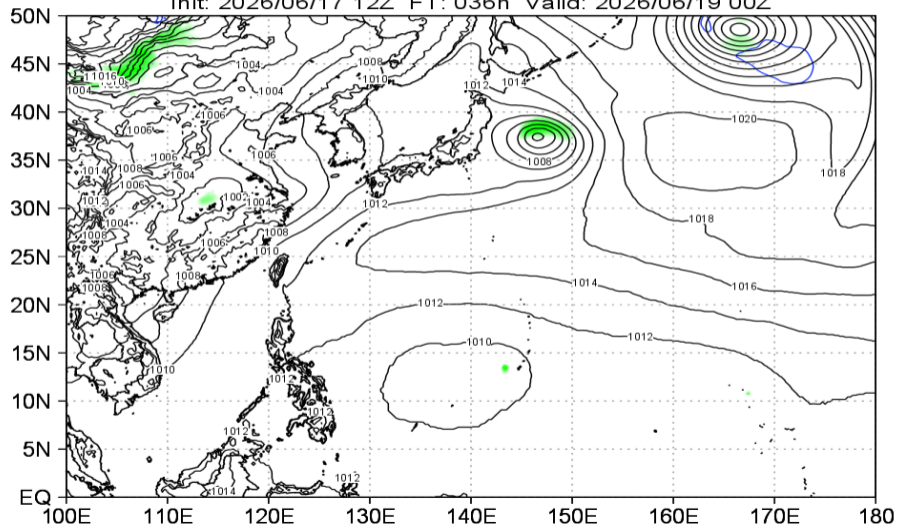
地上気圧 (GSMens 06/23 00Z 予報)

JMA GEPS MSLP (hPa) Mean&Spread
Init: 2026/06/17 12Z FT: 132h Valid: 2026/06/23 00Z

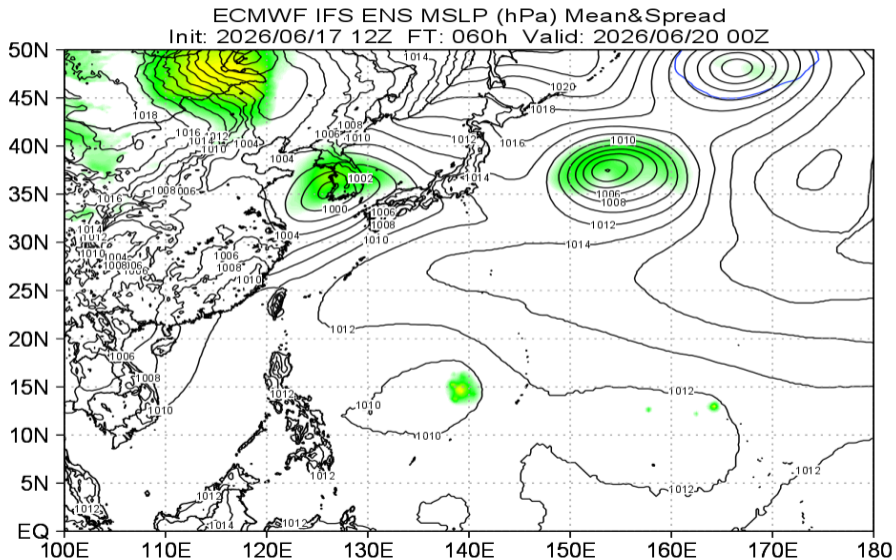


地上気圧 (IFSens 06/19 00Z 予報)

ECMWF IFS ENS MSLP (hPa) Mean&Spread
Init: 2026/06/17 12Z FT: 036h Valid: 2026/06/19 00Z

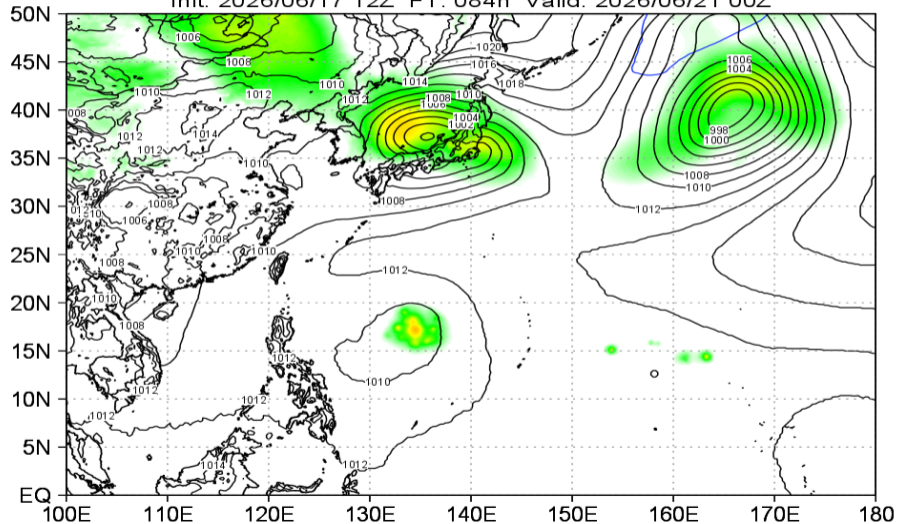


地上気圧 (IFSens 06/20 00Z 予報)



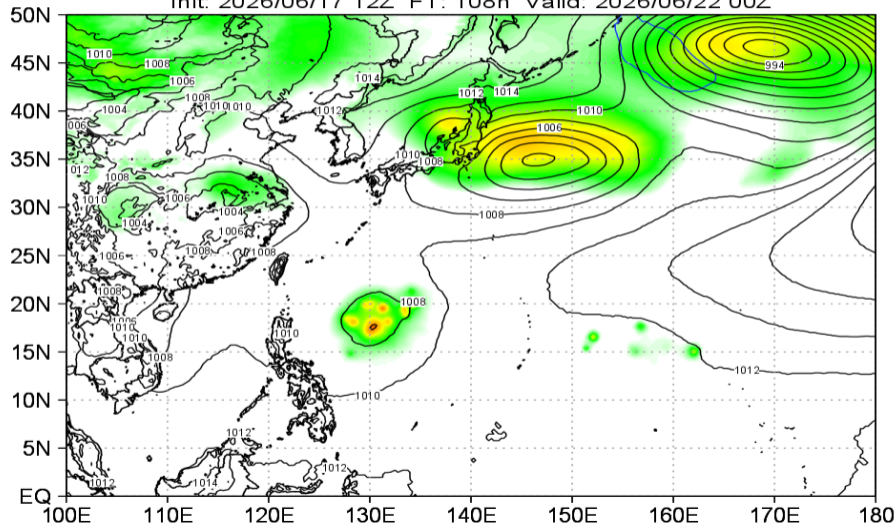
地上気圧 (IFSens 06/21 00Z 予報)

ECMWF IFS ENS MSLP (hPa) Mean&Spread
Init: 2026/06/17 12Z FT: 084h Valid: 2026/06/21 00Z



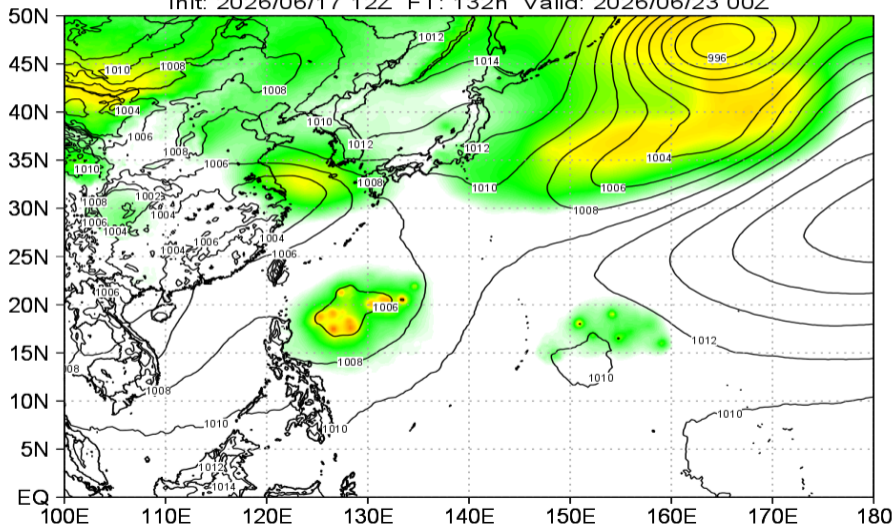
地上気圧 (IFSens 06/22 00Z 予報)

ECMWF IFS ENS MSLP (hPa) Mean&Spread
Init: 2026/06/17 12Z FT: 108h Valid: 2026/06/22 00Z



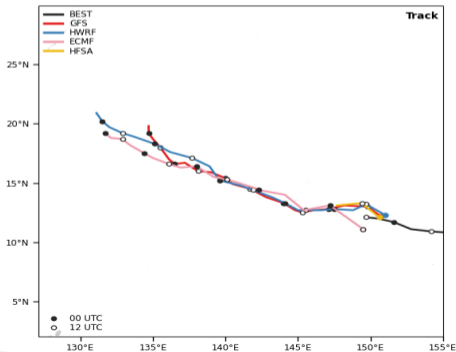
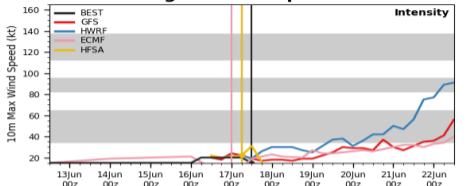
地上気圧 (IFSens 06/23 00Z 予報)

ECMWF IFS ENS MSLP (hPa) Mean&Spread
Init: 2026/06/17 12Z FT: 132h Valid: 2026/06/23 00Z

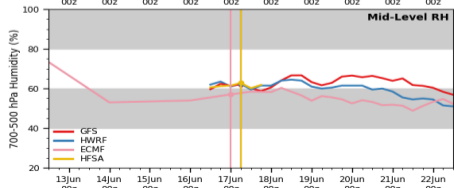
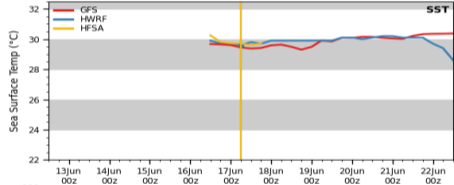
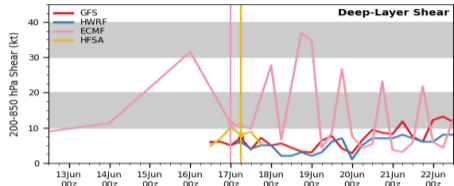


決定論マルチモデル予報 92W (06/17 12Z 初期値)

Multi-Model Diagnostic Comparison

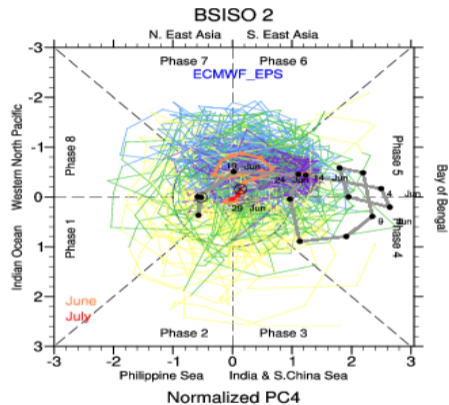
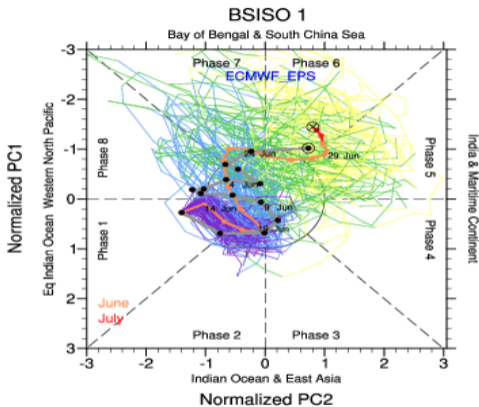


INVEST - WP922026



BSISO 予測 (ECMWFens 06/14 初期)

BSISO Forecast for 14-June-2026 to 3-July-2026



Reanalysis

Ensemble Mean

0-4d

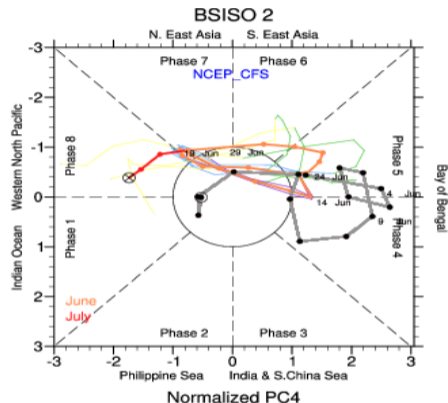
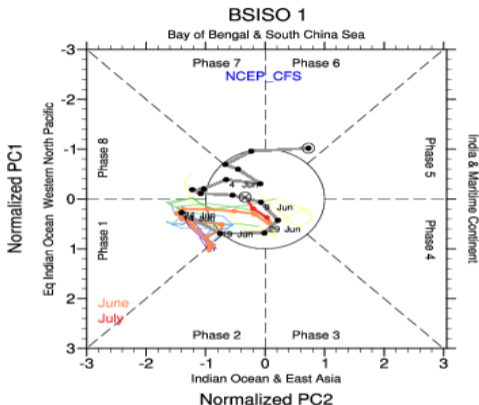
5-9d

10-14d

15-19d

BSISO 予測 (NCEPCFSens 06/14 初期)

BSISO Forecast for 14-June-2026 to 3-July-2026



Reanalysis

0-4d

5-9d

Ensemble Mean

10-14d

15-19d